

# Welcome


- **Audio for this event is available via ReadyTalk® Internet streaming.**
- **No telephone line is required.**
- **Computer speakers or headphones are necessary to listen to streaming audio.**
- **Limited dial-in lines are available. Please send a chat message if needed.**
- **This event is being recorded.**

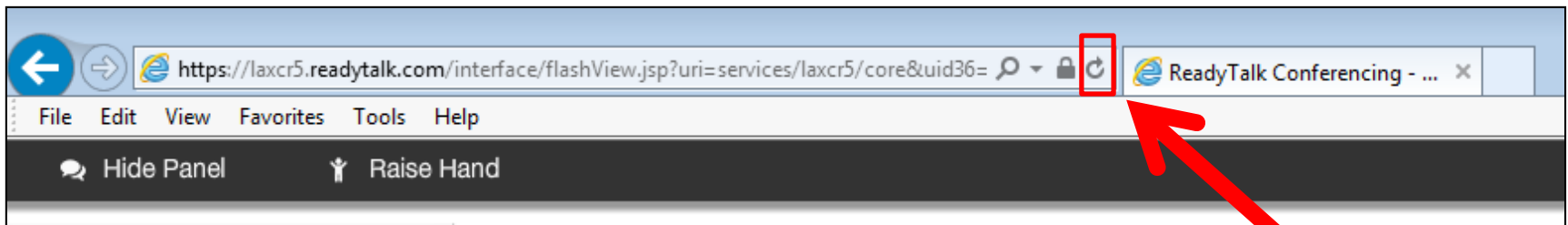


# Troubleshooting Audio

**Audio from computer speakers breaking up?**  
**Audio suddenly stop?**  
**Click Refresh icon**  
**– or –**  
**Click F5**



 F5 Key  
Top Row of Keyboard

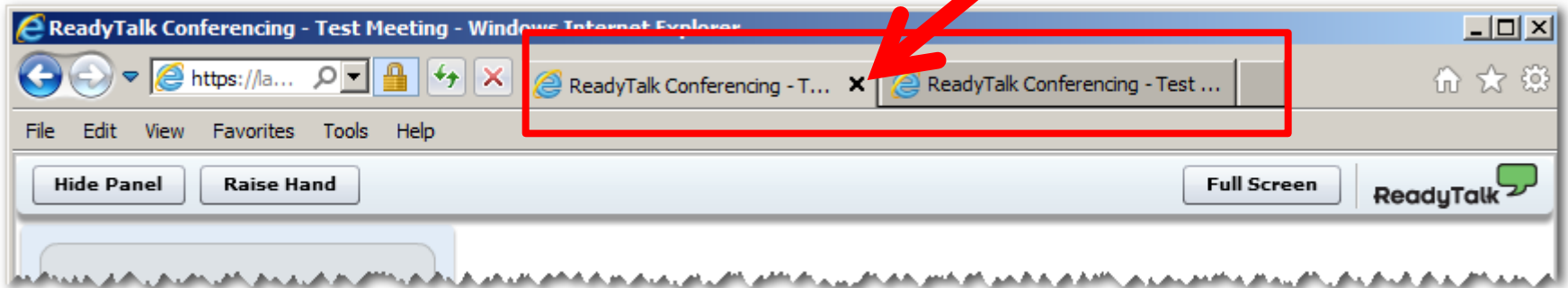


**Location of Buttons**

 Refresh

# Troubleshooting Echo

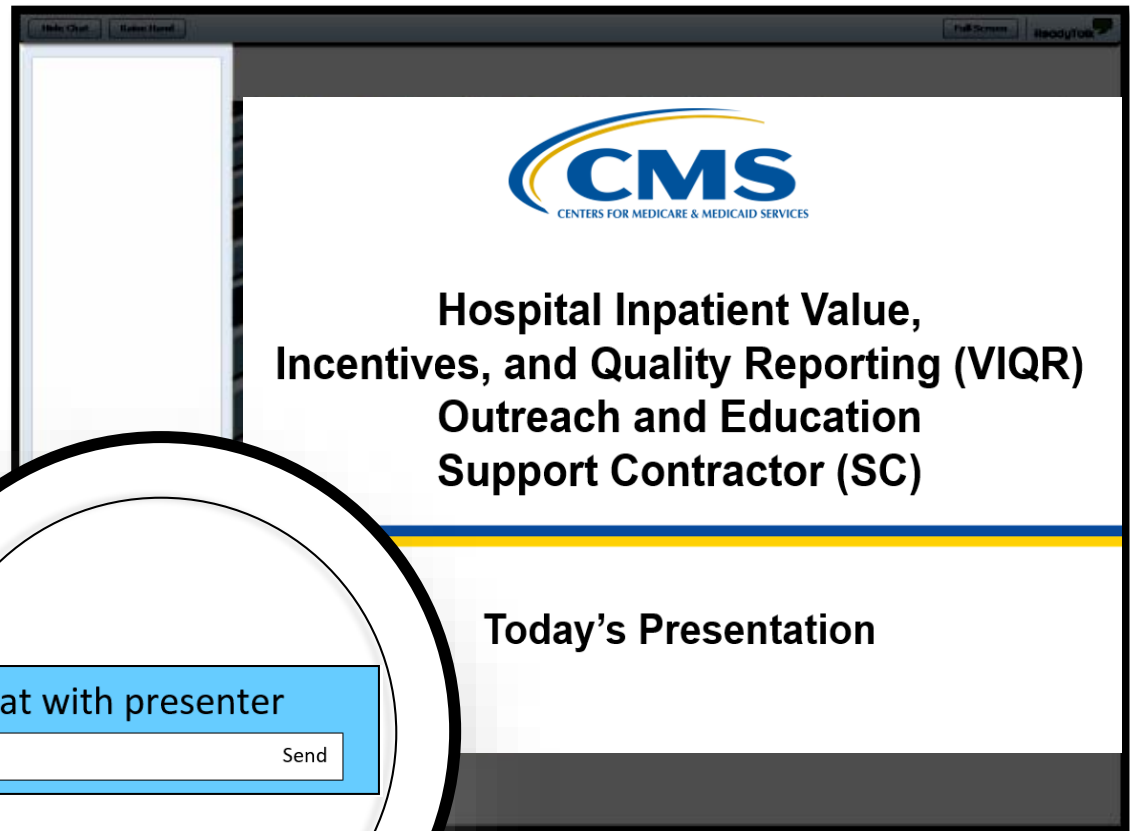
- Hear a bad echo on the call?
- Echo is caused by multiple browsers/tabs open to a single event (multiple audio feeds).
- Close all but one browser/tab and the echo will clear.



Example of Two Browsers/Tabs open in Same Event

# Submitting Questions

Type questions in the “Chat with presenter” section, located in the bottom-left corner of your screen.



# Webinar Chat Questions

## Chat Tool

- Submit questions pertinent to the topic of today's event.
- As time permits, we will answer these questions at the end of the webinar.

## **QualityNet Questions and Answers (Q&A) Tool**

- The Q&A tool is the best way to send us questions unrelated to the current webinar topic.
- Direct link:  
<https://cms-ip.custhelp.com/app/homeipf/p/831>
- Look for published Q&As in the searchable tool.



# IPFQR Program

## FY 2019 IPF PPS Proposed Rule

---

**Jeffrey A. Buck, PhD**

Senior Advisor for Behavioral Health  
Program Lead, Inpatient Psychiatric Facility Quality Reporting (IPFQR) Program  
Centers for Medicare & Medicaid Services (CMS)

**Lauren Lowenstein, MPH, MSW**

Program Specialist, IPFQR Program, CMS

**Evette Robinson, MPH**

Project Lead, IPFQR Program  
Value, Incentives, and Quality Reporting (VIQR)  
Outreach and Education Support Contractor (SC)

**May 17, 2018**

# Purpose

This presentation will summarize the proposed updates to the IPFQR Program, as outlined in the Fiscal Year (FY) 2019 Inpatient Psychiatric Facility Prospective Payment System (IPF PPS) Proposed Rule.

# Learning Objectives

At the conclusion of this presentation, attendees will be able to:

- Interpret the FY 2019 IPF PPS Proposed Rule, as it pertains to the IPFQR Program
- Describe the proposed changes to the IPFQR Program



IPFQR Program: FY 2019 IPF PPS Proposed Rule

## **Overview of the FY 2019 IPF PPS Proposed Rule**

# Functions of the Proposed Rule

Publication of the FY 2019 IPF PPS Proposed Rule enables CMS to achieve the following:

- Inform IPFQR Program participants about intended modifications to the program
- Solicit public comment on proposed changes
- Provide ample time for IPFs to prepare for changes that are likely to be confirmed in the final rule

# Summary of Proposed Changes

CMS proposed changes, include the following:

- Adoption of a new measure-removal factor
- Removal of eight measures for the FY 2020 and subsequent years' annual payment update (APU)
- Removal of the requirement to report sample size counts for measures for which sampling is performed
- Request for public comment
  - Patient-level data reporting
  - Future measure considerations

**NOTE:** CMS believes that these changes will reduce burden for stakeholders of the IPFQR Program.

# Measures Proposed for Removal

CMS is proposing eight measures for removal for the FY 2020 APU and subsequent years' APU:

- Influenza Vaccination Among Healthcare Personnel (HCP)
- Tobacco Use Screening (TOB-1)
- Alcohol Use Screening (SUB-1)
- Hours of Physical Restraint Use (HBIPS-2)
- Hours of Seclusion Use (HBIPS-3)
- Assessment of Patient Experience of Care
- Use of an Electronic Health Record (EHR)
- Tobacco Use Treatment Provided or Offered at Discharge (TOB-3), and its subset Tobacco Use Treatment at Discharge (TOB-3a)

# IPFQR Program Areas Without Proposed Changes

In this proposed rule, CMS is not proposing any changes to its previously finalized:

- Public display and review requirements
- Form, manner, and timing of quality data submission
- Sampling guidelines
- Reconsideration and appeals procedures
- Extraordinary Circumstances Exceptions (ECE) policy

IPFQR Program: FY 2019 IPF PPS Proposed Rule

## **Adoption of a New Removal Factor**

# Adoption of a New Removal Factor

CMS is engaging in efforts to ensure that the IPFQR Program measure set continues to promote improved health outcomes for beneficiaries while minimizing the overall costs associated with the program.

CMS is proposing a new measure-removal factor: The costs associated with a measure outweigh the benefit of its continued use in the program.

# Measures Proposed for Removal: Removal of Measure Due to Cost

CMS is proposing to remove the following measures under the proposed measure-removal factor:

- Influenza Vaccination Coverage Among Healthcare Personnel (HCP)
- Alcohol Use Screening (SUB-1)
- Assessment of Patient Experience of Care
- Use of an EHR
- Tobacco Use Treatment Provided or Offered at Discharge (TOB-3 and TOB-3a)



# Measures Proposed for Removal: “Topped-Out” Measures

CMS is proposing to remove the following measures, based on analysis of measure performance, which indicates they meet IPFQR Program topped-out criteria:

- TOB-1
- HBIPS-2
- HBIPS-3

IPFQR Program: FY 2019 IPF PPS Proposed Rule

## **Removal of Requirement to Report Sample Size Count**

# Removal of Requirement to Report Sample Size

- The current requirement is for annual reporting of aggregate population counts for Medicare and non-Medicare discharges by diagnostic group and sample size counts for measures for which sampling is performed.
- In efforts to further reduce reporting burden on facilities, CMS **is proposing to no longer require facilities to report sample size counts** for measures for which sampling is performed.
- **NOTE:** This proposal does not in any way change CMS requirements concerning sampling for any of its measures, but only changes the information that would be reported to CMS on the size of samples used for measure calculation as part of non-measure data collection.

IPFQR Program: FY 2019 IPF PPS Proposed Rule

## **Request for Public Comment**

# Request for Public Comment: Patient-Level Data Reporting

CMS recognizes that the reporting of aggregate measure data does not allow for data accuracy validation.

For this reason, CMS is considering requiring patient-level data reporting of IPFQR Program measure data in the future.

# Request for Public Comment: Future Measure Considerations

CMS is considering development of process and outcome measures related to treatment and management of depression. Specifically, CMS is considering future development and adoption of:

- A process measure that measures the number of facilities that administer a standardized assessment instrument (e.g., the Patient Health Questionnaire [PHQ-9]) at admission and discharge for patients admitted with depression
- A patient-reported outcome measure, which assesses change in patient-reported function, based on the change in results on the depression-assessment instrument (e.g., the PHQ-9) between admission and discharge

CMS welcomes public comment on the aforementioned future measure considerations, as well as any other possible new measures or new measure topics.

IPFQR Program: FY 2019 IPF PPS Proposed Rule

## **Helpful Resources**

# Acronyms

<b>APU</b>	annual payment update
<b>CMS</b>	Centers for Medicare & Medicaid Services
<b>ECE</b>	Extraordinary Circumstances Exception
<b>EHR</b>	electronic health record
<b>FUH</b>	Follow-Up After Hospitalization for Mental Illness
<b>HBIPS</b>	Hospital-Based Inpatient Psychiatric Services
<b>HCP</b>	healthcare personnel
<b>IPF</b>	inpatient psychiatric facility
<b>IPFQR</b>	Inpatient Psychiatric Facility Quality Reporting
<b>PHQ</b>	Patient Health Questionnaire
<b>PPS</b>	prospective payment system
<b>SC</b>	support contractor
<b>SUB</b>	Substance Use measure
<b>TOB</b>	Tobacco Use measure
<b>VIQR</b>	Value, Incentives, and Quality Reporting



# Helpful Resources

## Proposed Rule Available for Review and Comments

The FY 2019 IPF PPS Proposed Rule (83 FR 21104) is available from the *Federal Register* website at <https://federalregister.gov/d/2018-09069>. CMS will accept comments on the proposed rule and input on the request for information until June 26, 2018. Submit a comment electronically by either:

- Clicking on the green button at the top of the proposed rule posted in the *Federal Register*.

SUBMIT A FORMAL COMMENT

OR

- Clicking on <http://www.regulations.gov>, searching for “Inpatient Psychiatric Facilities,” and then clicking on the **Comment Now!** button next to the rule.

Medicare Program: FY 2019 Inpatient Psychiatric Facilities Prospective Payment System and Quality Reporting Updates for Fiscal Year Beginning October 1, 2018 (FY 2019)		<b>Comment Now!</b>
- Document Contents : ...Medicare & Medicaid Services ----- 42 CFR Part 412 Medicare Program; FY 2019 <b>Inpatient Psychiatric Facilities</b> Prospective Payment System and Quality Reporting Updates for Fiscal Year Beginning...		Due Jun 26, 2018 11:59 PM ET
Proposed Rule by CMS on 05/08/2018 ID: CMS-2018-0053-0002		Open Docket Folder RIN: 0938-AT32

# Helpful Resources

# Meaningful Measures Framework

Meaningful Measures Framework:

<https://www.cms.gov/Medicare/Quality-Initiatives-Patient-Assessment-Instruments/QualityInitiativesGenInfo/CMS-Quality-Strategy.html>

# Helpful Resources

## IPFQR Program Manual and Paper Tools

CMS recommends that IPFs refer to the IPFQR Program Manual for information pertaining to the IPFQR Program. This document, as well as other helpful resources and tools, can be found on:

- [QualityNet](https://www.qualitynet.org/dcs/ContentServer?c=Page&pageName=QnetPublic%2FPage%2FQnetTier2&cid=1228772864255) > Inpatient Psychiatric Facilities > Resources  
(<https://www.qualitynet.org/dcs/ContentServer?c=Page&pageName=QnetPublic%2FPage%2FQnetTier2&cid=1228772864255>)
- [Quality Reporting Center](http://www.qualityreportingcenter.com/inpatient/ipf/tools/) > Inpatient > IPFQR Program > Resources and Tools  
(<http://www.qualityreportingcenter.com/inpatient/ipf/tools/>)

# Helpful Resources

## Program Information and Support

### IPFQR Program General Information and Support

Q&A Tool	Email Support	Website	Phone Support
<a href="https://cms-IP.custhelp.com">https://cms-IP.custhelp.com</a>	<a href="mailto:IPFQualityReporting@hcqis.org">IPFQualityReporting@hcqis.org</a>	<a href="http://www.QualityReportingCenter.com">www.QualityReportingCenter.com</a>	(866) 800-8765
Monthly Web Conferences	ListServes	Hospital Contact Change Form	Secure Fax
<a href="http://www.QualityReportingCenter.com">www.QualityReportingCenter.com</a>	<a href="http://www.QualityNet.org">www.QualityNet.org</a>	<a href="#">Hospital Contact Change Form</a>	(877) 789-4443

# Helpful Resources

## Save the Date

### Upcoming IPFQR Program Educational Webinars

June 2018	Keys to Successful FY 2019 Data Submission
July 2018	A Community Approach to Follow-Up Care
August 2018	FY 2019 IPF PPS Final Rule/APU Determination and Reconsideration Review

# Disclaimer

This presentation was current at the time of publication and/or upload onto the *Quality Reporting Center* and *QualityNet* websites. Medicare policy changes frequently. Any links to Medicare online source documents are for reference use only. In the case that Medicare policy, requirements, or guidance related to this presentation change following the date of posting, this presentation will not necessarily reflect those changes; given that it will remain as an archived copy, it will not be updated.

This presentation was prepared as a service to the public and is not intended to grant rights or impose obligations. Any references or links to statutes, regulations, and/or other policy materials included in the presentation are provided as summary information. No material contained therein is intended to take the place of either written laws or regulations. In the event of any conflict between the information provided by the presentation and any information included in any Medicare rules and/or regulations, the rules and regulations shall govern. The specific statutes, regulations, and other interpretive materials should be reviewed independently for a full and accurate statement of their contents.