

# Welcome

- **Audio for this event is available via ReadyTalk® Internet streaming.**
- **No telephone line is required.**
- **Computer speakers or headphones are necessary to listen to streaming audio.**
- **Limited dial-in lines are available. Please send a chat message if needed.**
- **This event is being recorded.**



# Troubleshooting Audio

Audio from computer speakers breaking up?  
Audio suddenly stop?

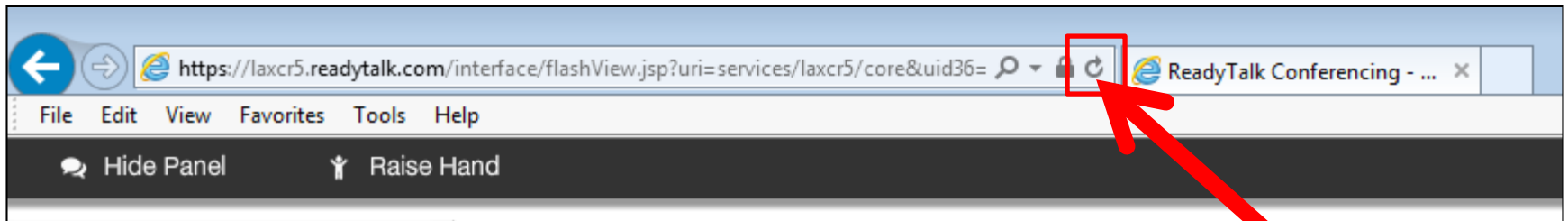
Click Refresh icon

– or –

Click F5



F5 Key  
Top Row of Keyboard

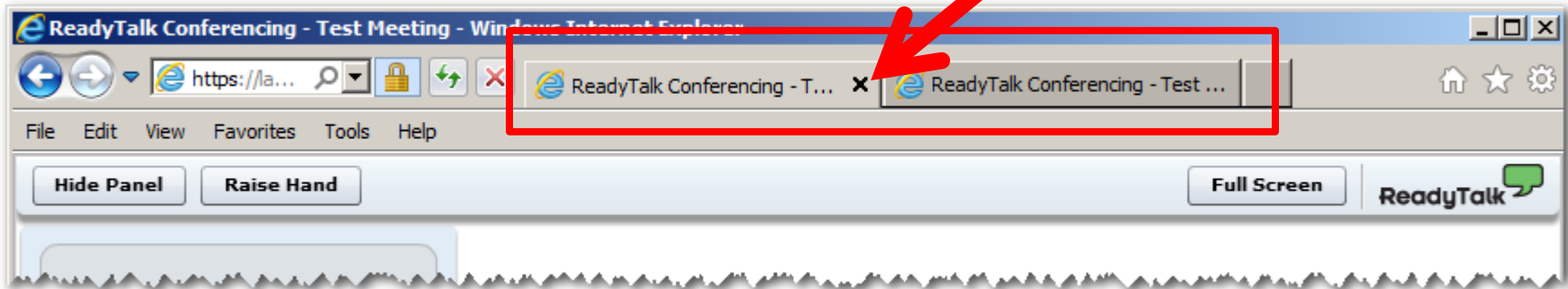


Location of Buttons

Refresh

# Troubleshooting Echo

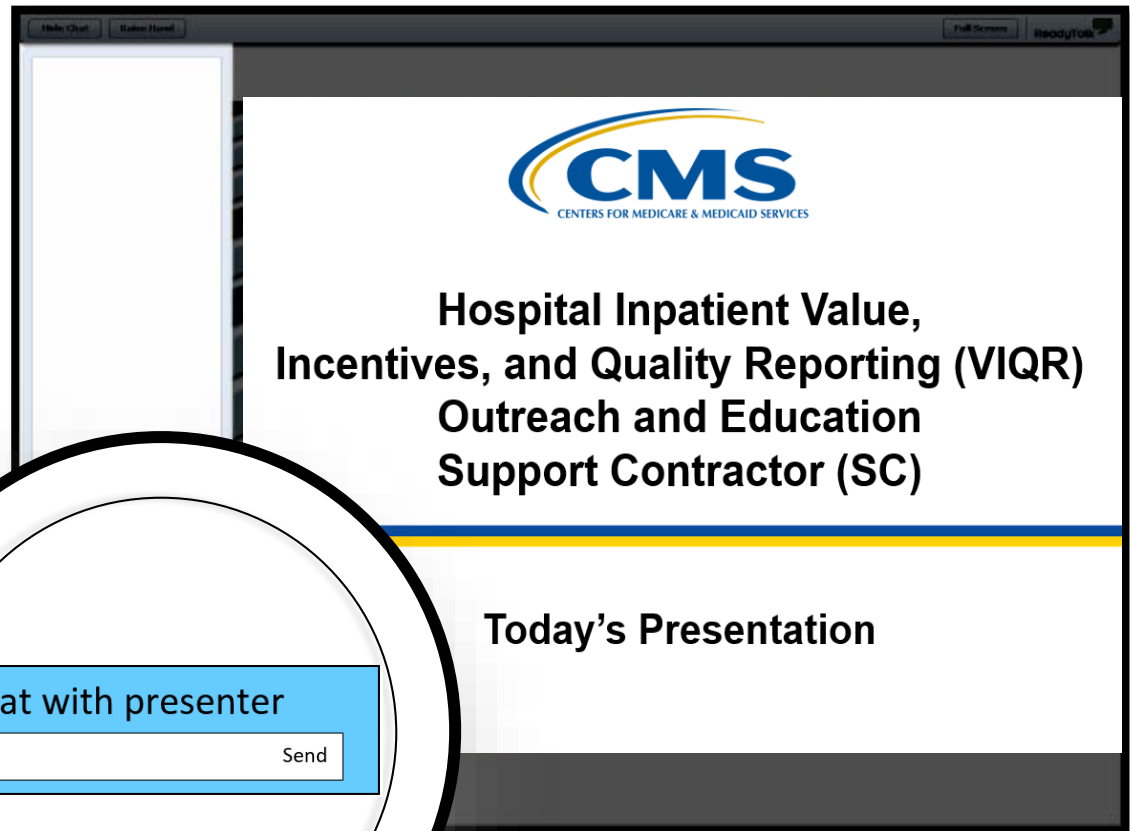
- Hear a bad echo on the call?
- Echo is caused by multiple browsers/tabs open to a single event—multiple audio feeds.
- Close all but one browser/tab and the echo will clear.



Example of Two Browsers/Tabs open in Same Event

# Submitting Questions

Type questions in the “Chat with Presenter” section, located in the bottom-left corner of your screen.



The image shows a screenshot of a presentation slide from the Centers for Medicare & Medicaid Services (CMS). The slide title is "Hospital Inpatient Value, Incentives, and Quality Reporting (VIQR) Outreach and Education Support Contractor (SC)". Below the title, it says "Today's Presentation". In the bottom-left corner, there is a blue button labeled "Chat with presenter" with a text input field and a "Send" button. A magnifying glass is positioned over this button and input field, highlighting it. The CMS logo is visible at the top of the slide.



# **Pre-Submission Validation Application (PSVA) Overview for Electronic Clinical Quality Measure (eCQM) Data Submission in Calendar Year (CY) 2018**

**J. Victor Farrell**

PSVA Developer  
Enterprise Services Solutions

**Artrina Sturges, EdD**

Alignment of eCQMs Lead  
Hospital Inpatient Value, Incentives, and Quality Reporting  
Outreach and Education Support Contractor

**August 8, 2018**

# Purpose

This presentation will provide eCQM data submitters and stakeholders with an overview of the PSVA tool for eCQM data submission in CY 2018.

# Objectives

By the end of the presentation, participants will:

- Learn how to download and utilize the PSVA tool
- Understand the benefits of utilizing the PSVA tool for hospital quality reporting programs such as the Hospital Inpatient Quality Reporting and Promoting Interoperability Programs
- Locate resources related to the use of the PSVA tool

# Agenda

- PSVA Overview
  - What is PSVA?
  - PSVA benefits
  - PSVA process
  - Technical/system requirements
- PSVA Demonstration
- Resources
- Question and Answer Session



PSVA Overview for eCQM Data Submission in CY 2018

---

## **PSVA Overview**

# What is PSVA?

## The PSVA:

- Is a downloadable tool that operates on a user's system
- Was developed in response to interest and demand from the quality reporting community to validate Quality Reporting Document Architecture (QRDA) Category I files

The prior release was in March 2018 (version 1.2.5) and the latest release was July 2018 (version 1.3.0)

# PSVA Benefits

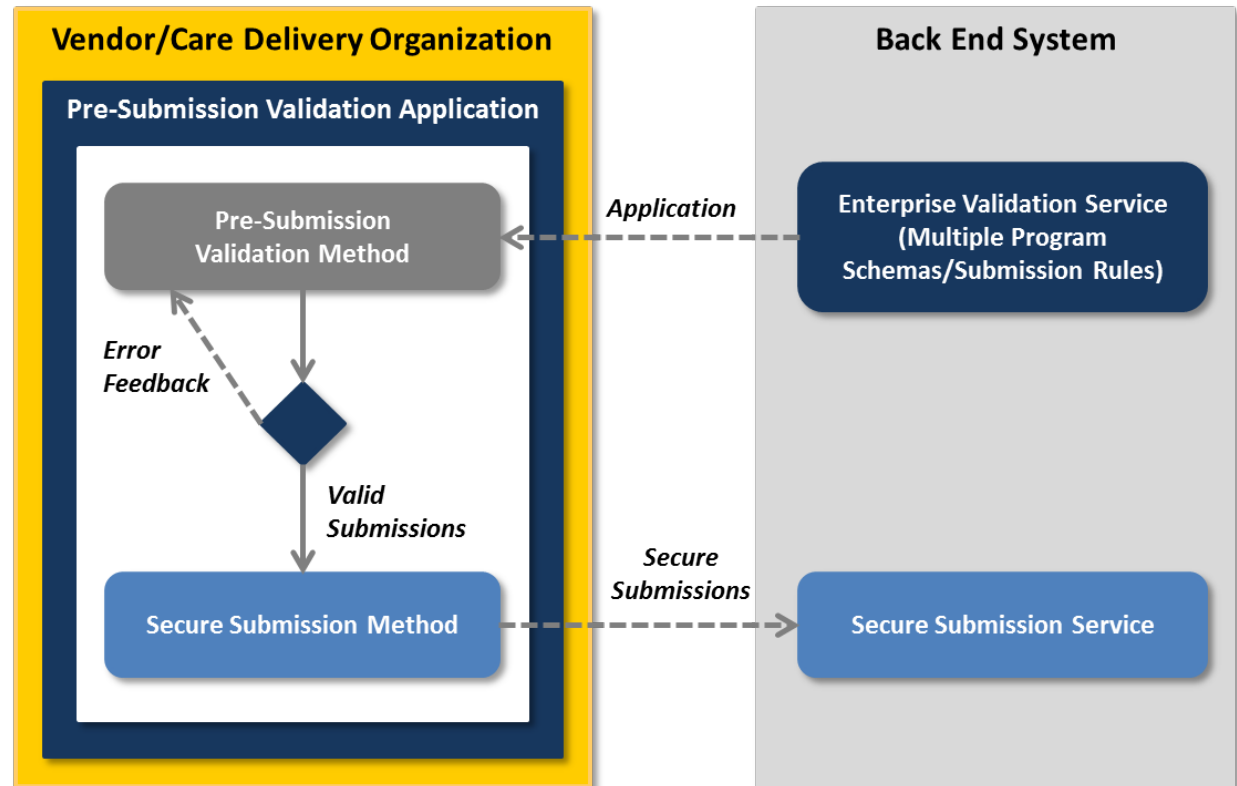
## The PSVA:

- Permits submitters to catch and correct errors prior to data submission to CMS
- Provides validation feedback within the submitter's system
- Allows valid files to be separated and submitted while invalid files are identified for error correction

# Overview of the PSVA Process

The vendor or care delivery organization, also known as the “user”:

1. Downloads the PSVA to the vendor’s system
2. Validates quality submission files locally using the Pre-Submission Validation Method
3. Receives immediate quality submission error feedback
4. Submits valid quality reporting submissions



# Technical Requirements

To utilize the PSVA, organizations must:

- Create QRDA Category I files based on the Health Level 7 (HL7) Base Standard for QRDA and the CMS QRDA Implementation Guide (IG)
- Download and install the PSVA to their system
  - Requires a *QualityNet Secure Portal* user account
- Submit files
  - Requires a *QualityNet Secure Portal* user account with an Electronic Health Record (EHR) Data Upload role

**NOTE:** For assistance with user accounts or roles, please contact the *QualityNet* Help Desk at [gnetsupport@hcqis.org](mailto:gnetsupport@hcqis.org) or (866) 288-8912, 7 a.m.–7 p.m. Central Time, Monday through Friday.

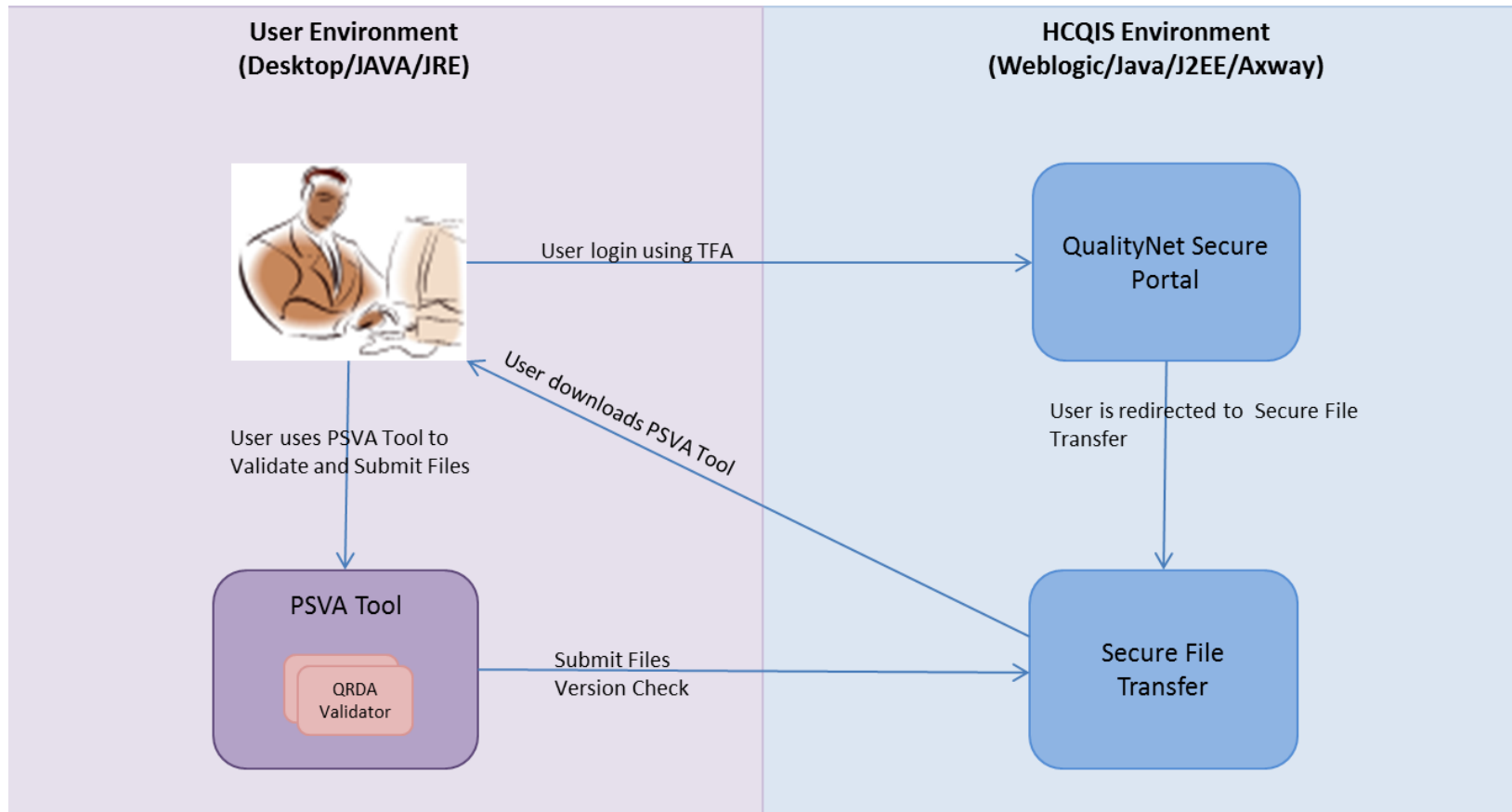
# System Requirements

Minimum system requirements include:

- MS Windows 7, Rev1.1, 64 bit
- Intel Core2Duo CPU @ 2.9 GHz or higher
- 4 GB RAM
- 250 GB hard drive with at least 175 GB free space

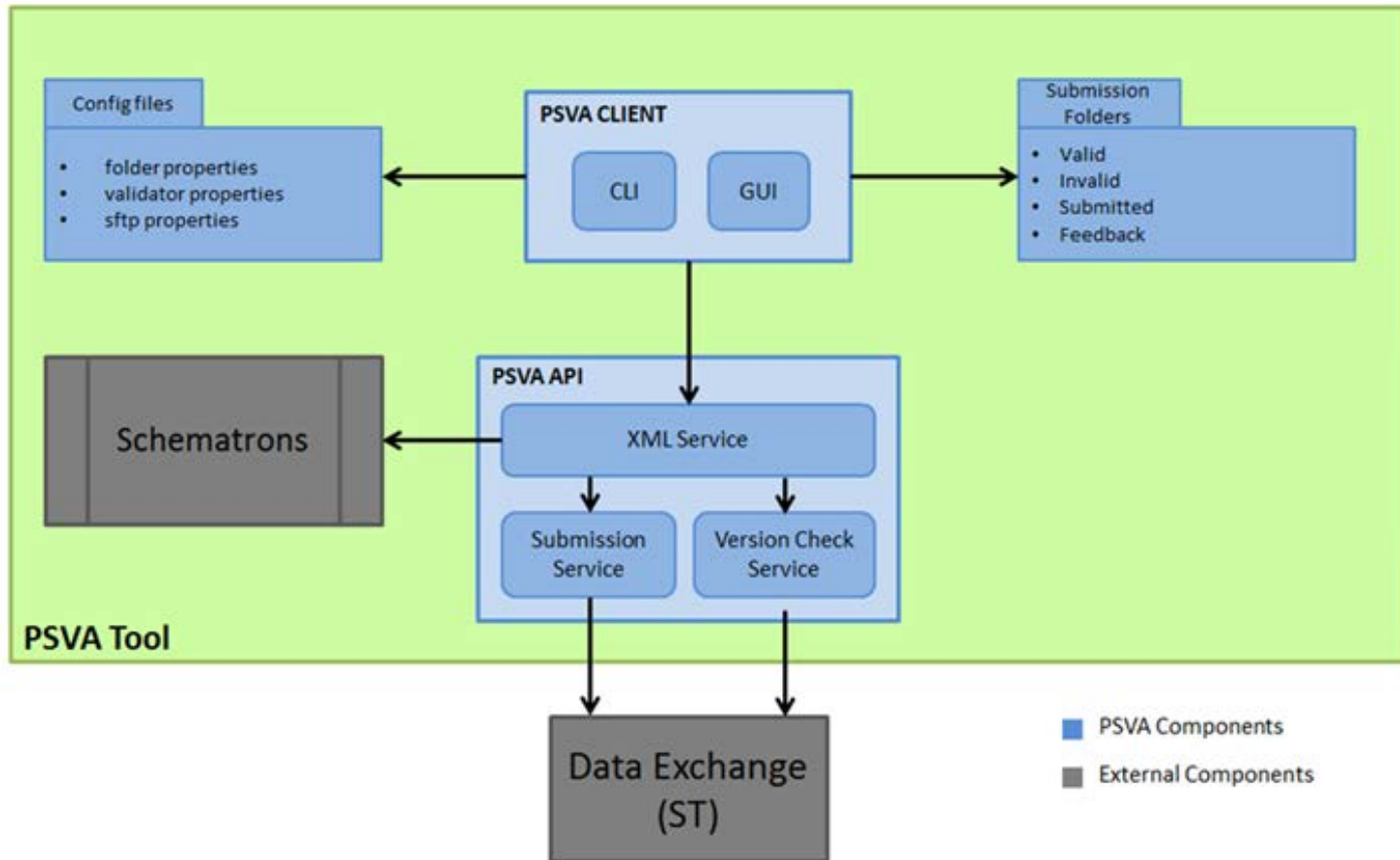
**NOTE:** The Java runtime environment (JRE) and the Java Cryptology Extension (JCE) required to run the tool are now bundled with it.

# Components of the PSVA Submission Process



TFA = two-factor authentication, HCQIS = healthcare quality information system, J2EE = Java Platform, Enterprise Edition

# PSVA Architecture



SFTP = Secure File Transfer Protocol, CU = control unit or CLI = command-line interface, GUI = graphical user interface, XML = Extensible Markup Language



PSVA Overview for eCQM Data Submission in CY 2018

---

## **PSVA Demonstration**

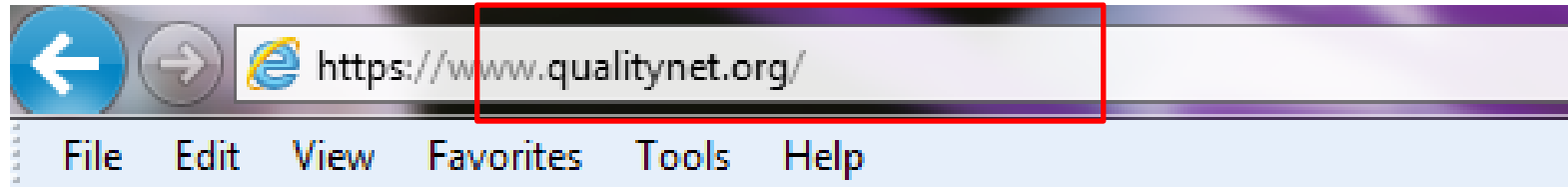
# Preview of PSVA

Demonstration of the tool includes how to:

- Download from the *QualityNet Secure Portal*
- Log in and version check
- Upload/Add files
- Validate files
- Submit files to CMS

# Accessing *QualityNet Secure Portal*

1. Open *QualityNet.org* in an internet browser by typing <https://www.qualitynet.org/> in the location bar.



2. Click on the [**Log in**] button to navigate to the *QualityNet Secure Portal*.




# Accessing *QualityNet Secure Portal*

3. Select “Secure File Transfer” from the drop-down menu.

**Choose Your QualityNet Destination**

Please select your QualityNet destination to reach the correct login screen for your QualityNet portal.

Secure File Transfer 

**Let's Go** **Cancel**

# Accessing *QualityNet Secure Portal*

4. Enter a valid user ID, password, and security code combination on the log-in screen to launch the *QualityNet Secure Portal*.



**Log In to QualityNet** \* Required Field

Please enter your CMS User ID and password, followed by your Symantec VIP Security Code, then click Submit.

\* User ID

\* Password

\* Security Code

CANCEL SUBMIT

# Accessing *QualityNet Secure Portal*

5. Click on [**I Accept**] to accept the Access Agreement and enter the *QualityNet Secure Portal*.

**\*\*\*\*WARNING\* \*WARNING\* \*WARNING\*\*\*\***

This warning banner provides privacy and security notices consistent with applicable federal laws, directives, and other federal guidance for accessing this Government system, which includes (1) this computer network, (2) all computers connected to this network, and (3) all devices and storage media attached to this network or to a computer on this network.

This system is provided for Government-authorized use only.

Unauthorized or improper use of this system is prohibited and may result in disciplinary action and/or civil and criminal penalties.

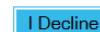
Personal use of social media and networking sites on this system is limited as to not interfere with official work duties and is subject to monitoring.

By using this system, you understand and consent to the following: The Government may monitor, record, and audit your system usage, including usage of personal devices and email systems for official duties or to conduct HHS business. Therefore, you have no reasonable expectation of privacy regarding any communication or data transiting or stored on this system. At any time, and for any lawful Government purpose, the government may monitor, intercept, and search and seize any communication or data transiting or stored on this system.

Any communication or data transiting or stored on this system may be disclosed or used for any lawful Government purpose.

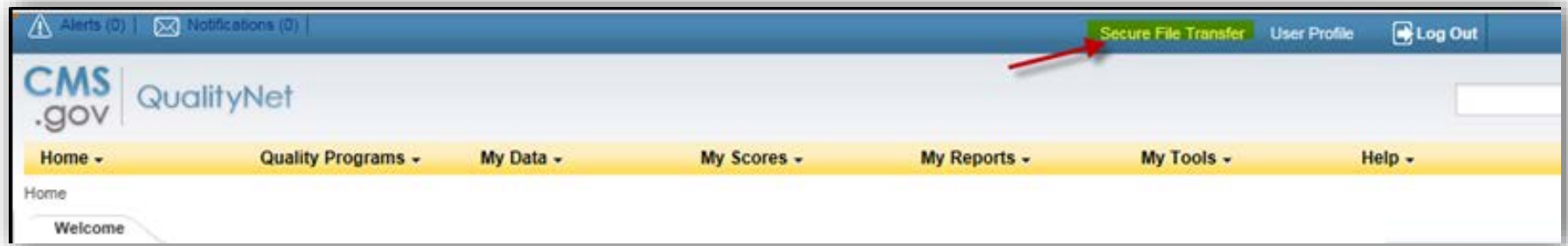
**\*\*\*\*WARNING\* \*WARNING\* \*WARNING\*\*\*\***

I accept the above Terms and Conditions.



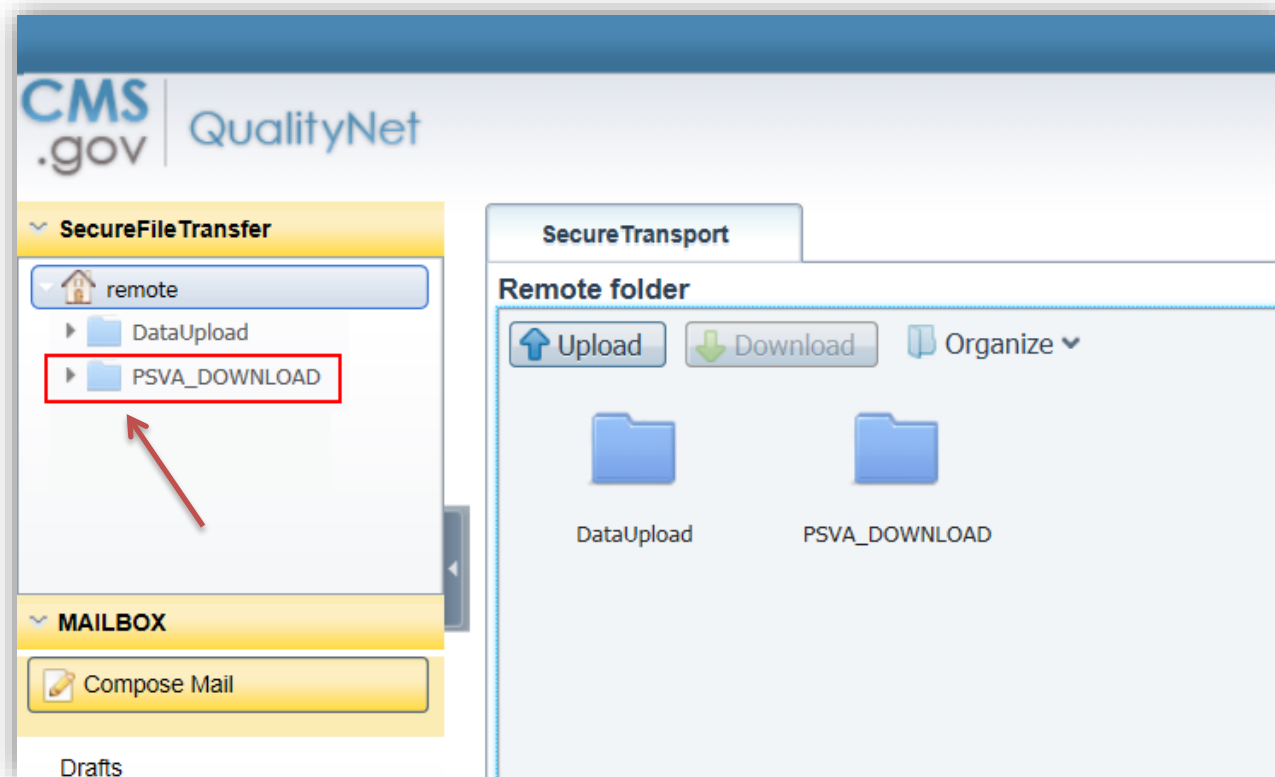
# Accessing *QualityNet Secure Portal*

6. Click on the [**Secure File Transfer**] link on the top bar of the landing page to navigate to Secure File Transfer.



# Downloading the PSVA Tool

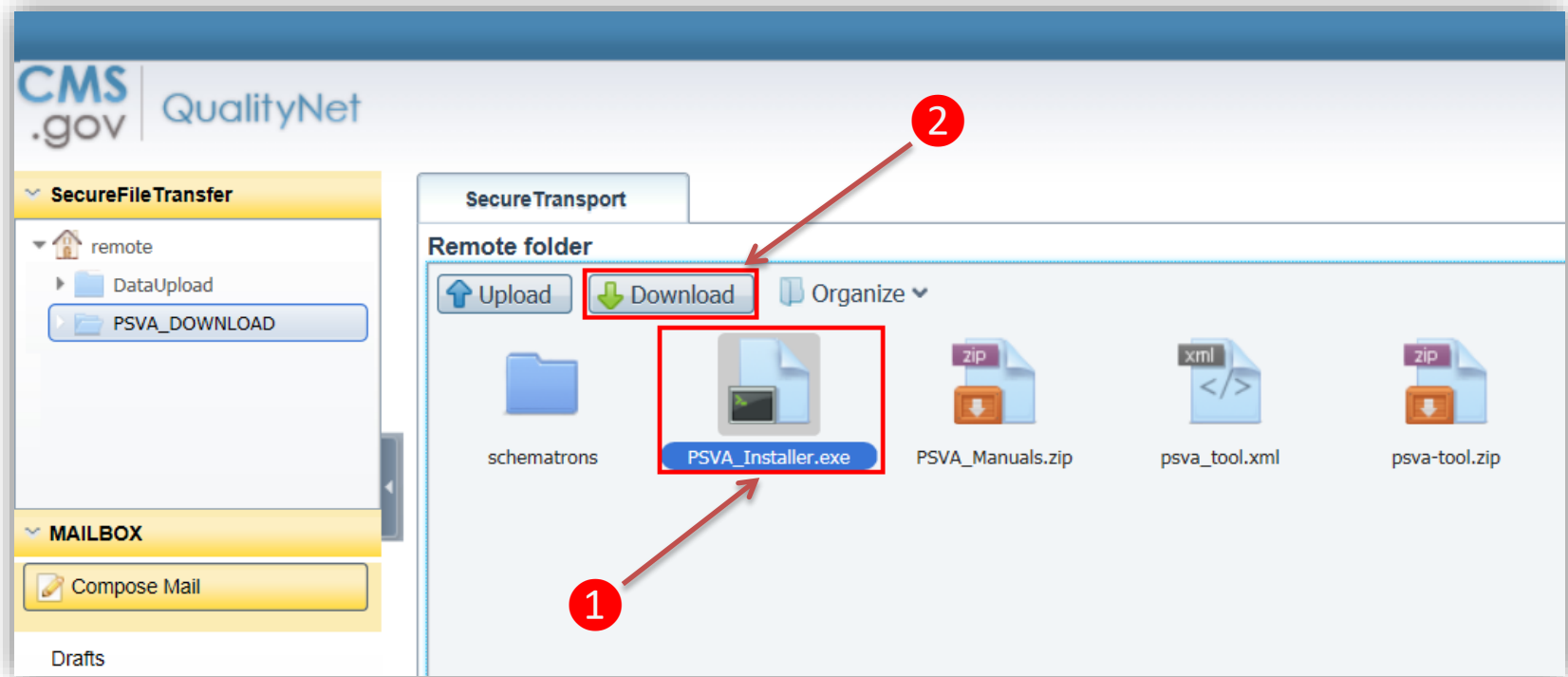
1. Click on **[PSVA\_DOWNLOAD]** directory in the navigation section on the left pane. The **PSVA\_Installer.exe** will appear in the details section on the right pane (see next page).





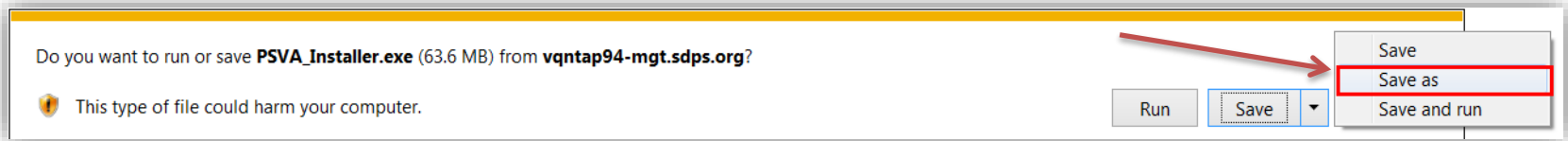
# Downloading the PSVA Tool

2. Select the **[PSVA\_Installer.exe]** and click the **[Download]** button on the top of the screen to download the PSVA tool.

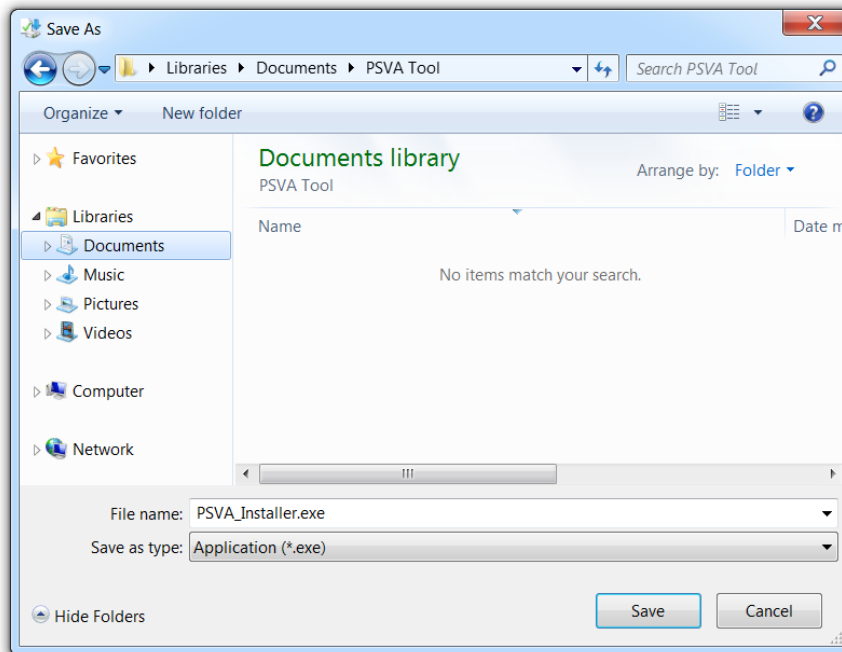


# Downloading the PSVA Tool

3. Save the file to your user directory by selecting the **[Save as]** option.



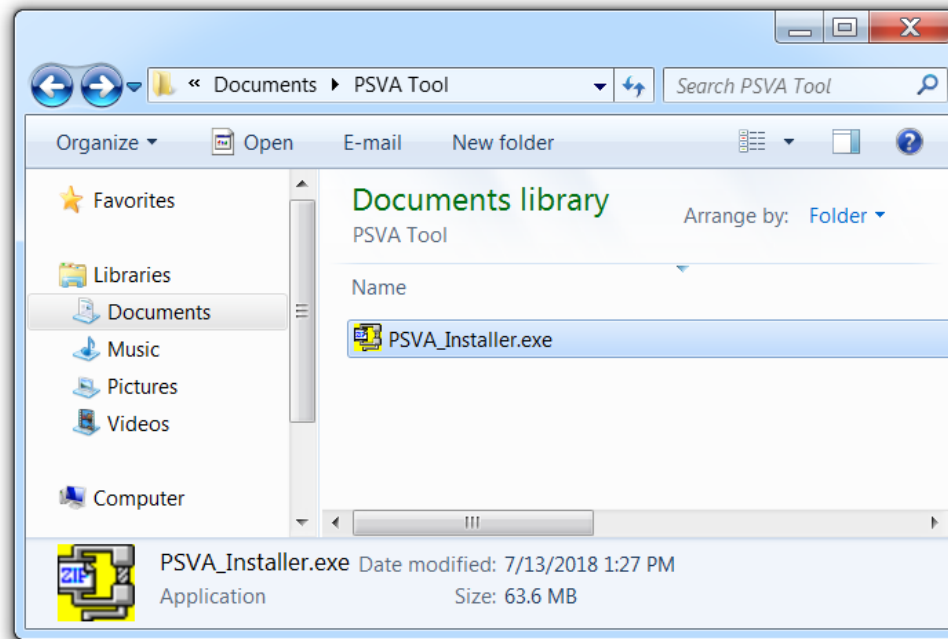
4. Select a location within your user directory on the **[Save As]** window.



- a. A notification at the bottom of the window will appear notifying you that the download has completed.

# Downloading the PSVA Tool

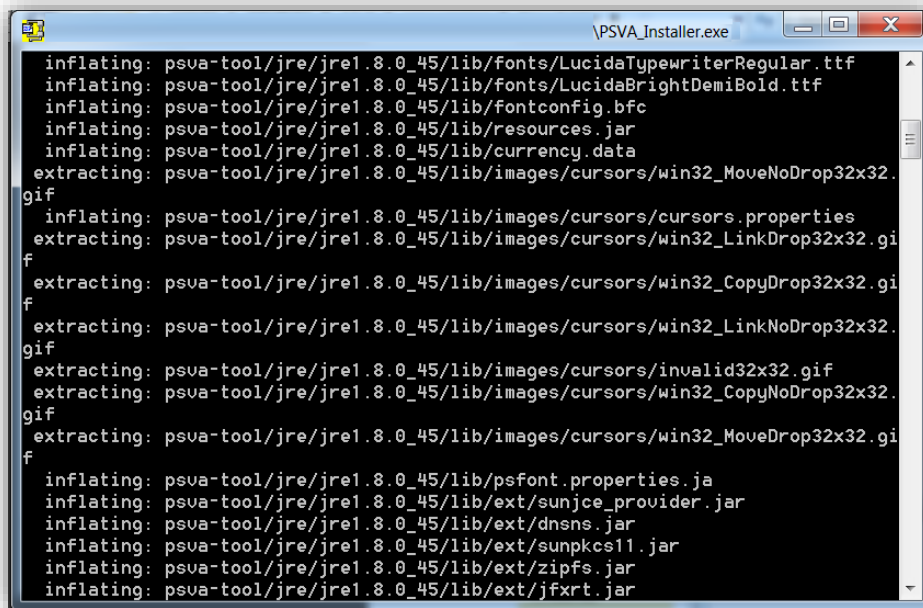
5. Navigate to the folder where the PSVA Installer was saved.



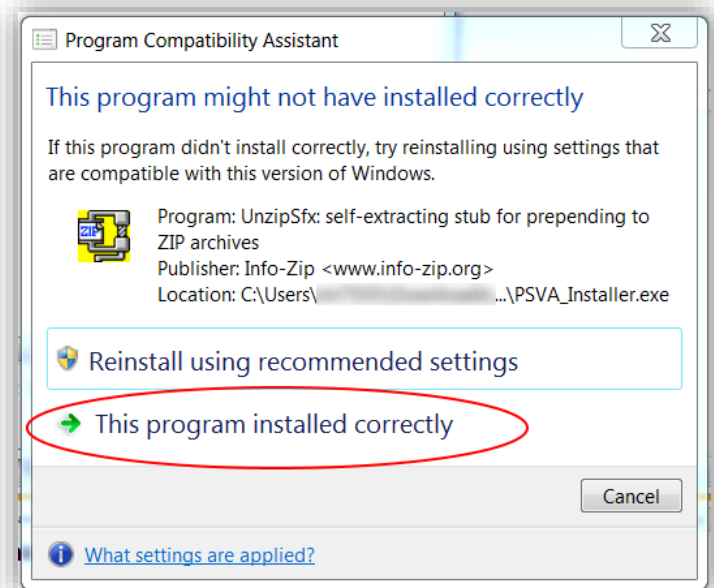
6. Double click **[PSVA\_Installer.exe]** to extract the contents of the tool to the current location.

# Downloading the PSVA Tool

7. If you are overwriting a previous version of PSVA you will be prompted to overwrite files. Type **A** and hit enter. Then the files will extract.



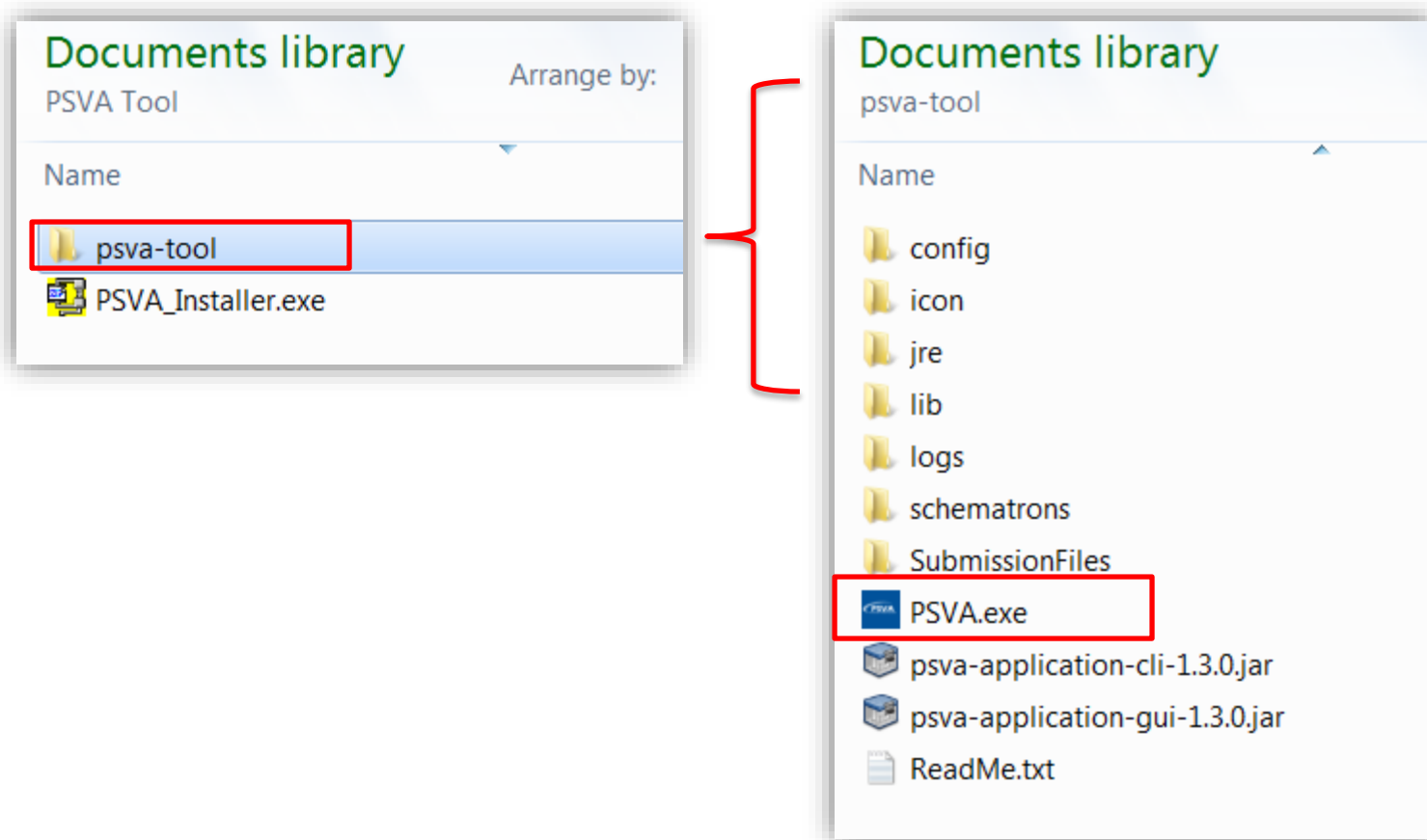
```
\PSVA_Installer.exe
inflating: psva-tool/jre/jre1.8.0_45/lib/fonts/LucidaTypewriterRegular.ttf
inflating: psva-tool/jre/jre1.8.0_45/lib/fonts/LucidaBrightDemiBold.ttf
inflating: psva-tool/jre/jre1.8.0_45/lib/fontconfig.bfc
inflating: psva-tool/jre/jre1.8.0_45/lib/resources.jar
inflating: psva-tool/jre/jre1.8.0_45/lib/currency.data
extracting: psva-tool/jre/jre1.8.0_45/lib/images/cursors/win32_MoveNoDrop32x32.gif
inflating: psva-tool/jre/jre1.8.0_45/lib/images/cursors/cursors.properties
extracting: psva-tool/jre/jre1.8.0_45/lib/images/cursors/win32_LinkDrop32x32.gif
extracting: psva-tool/jre/jre1.8.0_45/lib/images/cursors/win32_CopyDrop32x32.gif
extracting: psva-tool/jre/jre1.8.0_45/lib/images/cursors/win32_LinkNoDrop32x32.gif
extracting: psva-tool/jre/jre1.8.0_45/lib/images/cursors/invalid32x32.gif
extracting: psva-tool/jre/jre1.8.0_45/lib/images/cursors/win32_CopyNoDrop32x32.gif
extracting: psva-tool/jre/jre1.8.0_45/lib/images/cursors/win32_MoveDrop32x32.gif
inflating: psva-tool/jre/jre1.8.0_45/lib/psfont.properties.ja
inflating: psva-tool/jre/jre1.8.0_45/lib/ext/sunjce_provider.jar
inflating: psva-tool/jre/jre1.8.0_45/lib/ext/dnsns.jar
inflating: psva-tool/jre/jre1.8.0_45/lib/ext/sunpkcs11.jar
inflating: psva-tool/jre/jre1.8.0_45/lib/ext/zipfs.jar
inflating: psva-tool/jre/jre1.8.0_45/lib/ext/jfxrt.jar
```



8. If you get the Program Compatibility Assistant pop-up, select [**This program installed correctly**].

# Launching the PSVA Tool

Open the extracted folder and double click on **[PSVA.exe]**.



# Log in to PSVA

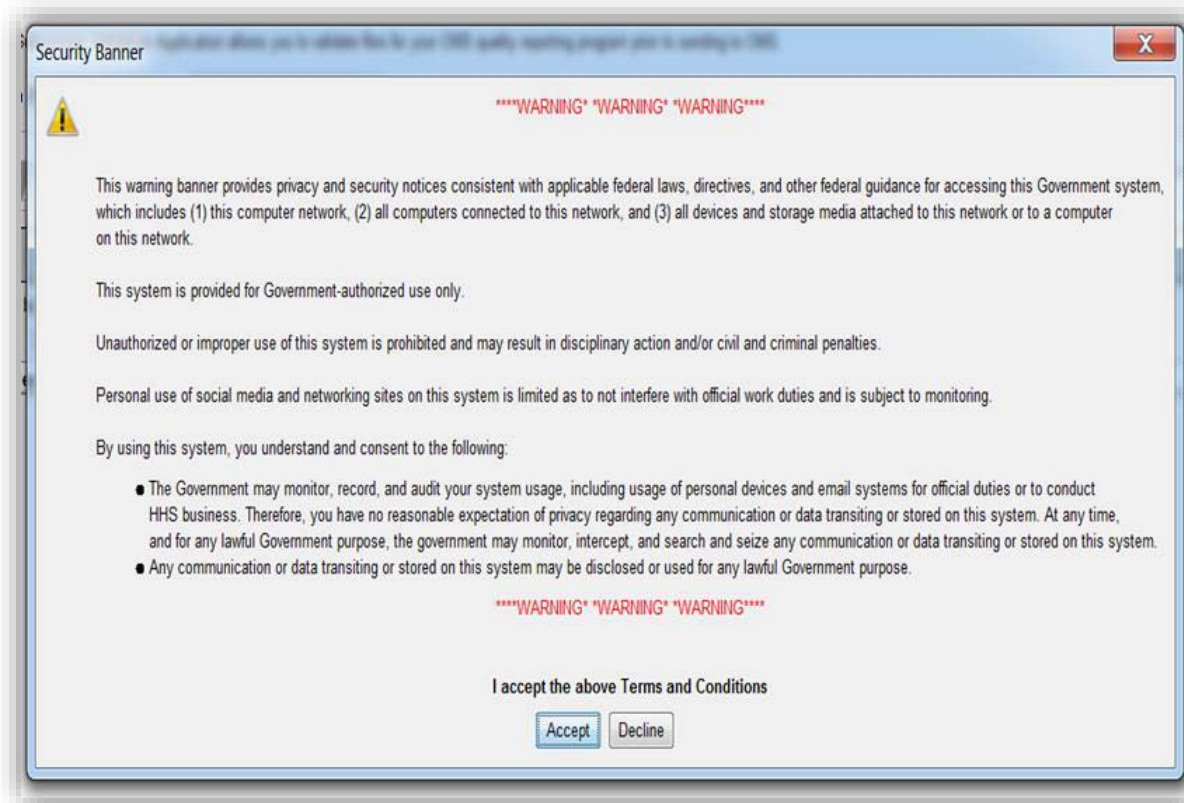
The user:

- Must have an EHR Data Upload role assigned to the user's *QualityNet Secure Portal* credentials
- Will be prompted to enter a valid CMS *QualityNet* user ID and password combination
  - The same credentials that the user used to log in to the *QualityNet Secure Portal*
- May also click the **[Login]** button to get the log-in prompt



# Security Banner

The System User Notification Warning Banner is displayed regardless of the credentials entered. You must hit **[Accept]** to continue.



# Log-in Messages

Different messages can be generated during this log-in process.

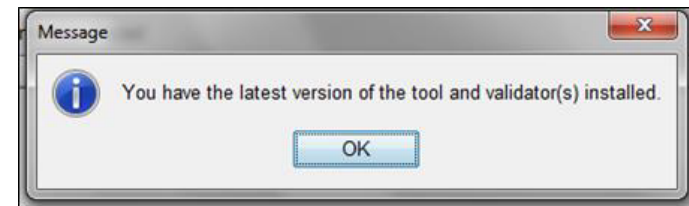
## 1. Error connecting to the server



## 2. Credentials cannot be verified



## 3. No errors and connection is successful; user credentials are validated





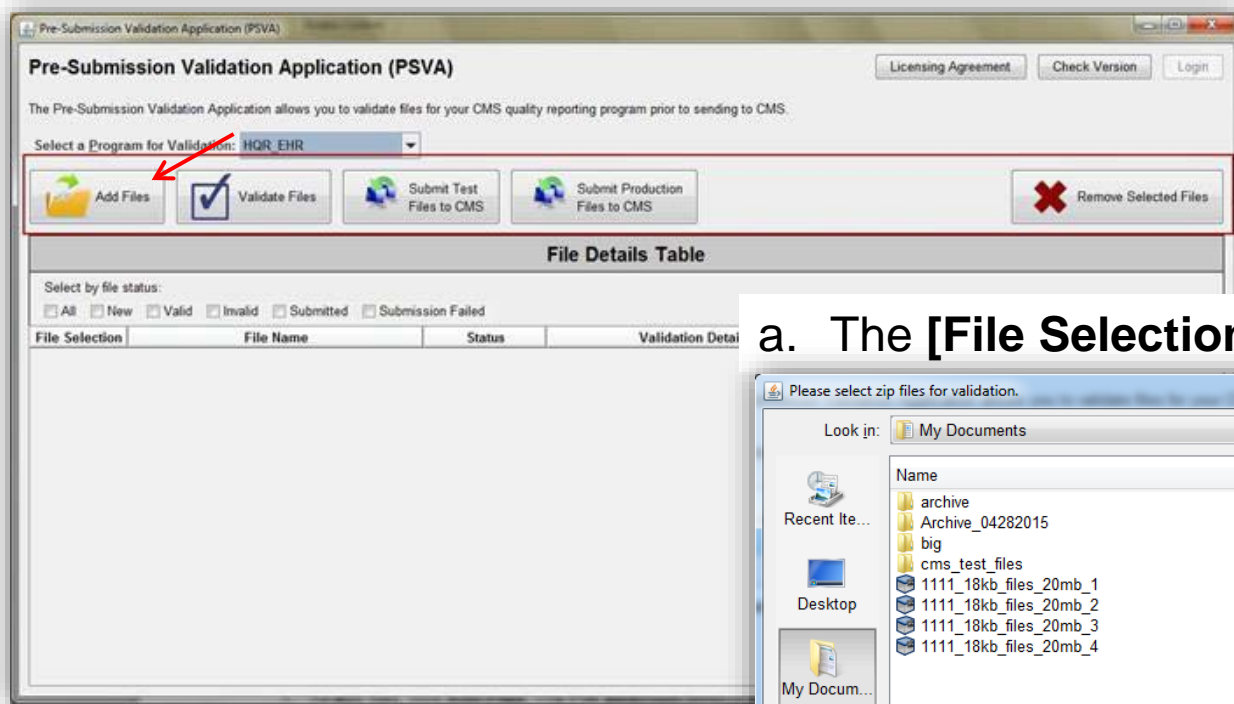
# Select a Program

After a successful user log-in to the application, the **[Program Selection]** drop-down menu is enabled.

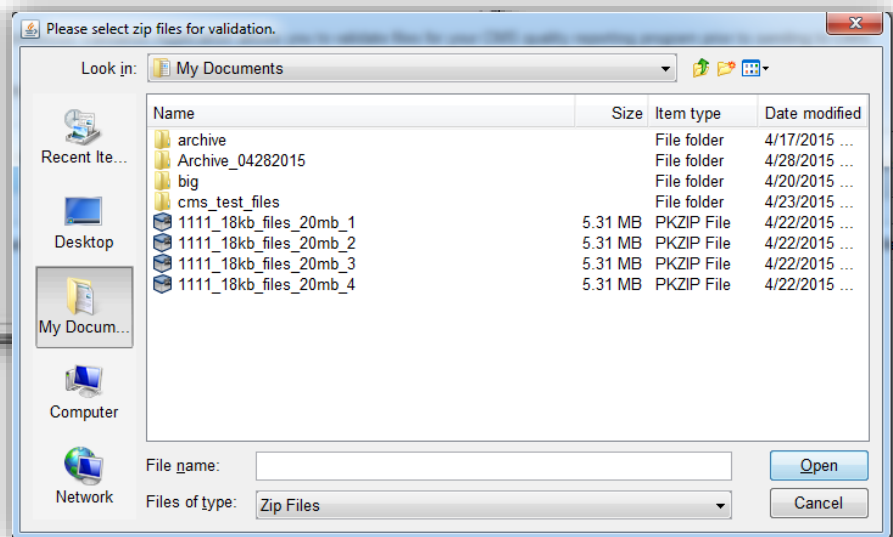


# Upload/Add Files

1. Select the **[Add Files]** button.



a. The **[File Selection]** window will open.



# Upload/Add Files

2. Navigate to a location where the ZIP files are stored on the workstation.
  - a. The current version of the PSVA tool only accepts ZIP files.
3. Select one or more files to add to the application and select the **[Open]** button.
  - a. This pop-up message will appear.



4. Click **[OK]** to view the selected ZIP files that were added to the file details table within the PSVA tool.

# Upload/Add Files

5. The status of the files within the PSVA tool will be reflected as **New**.

Pre-Submission Validation Application (PSVA)

The Pre-Submission Validation Application allows you to validate files for your CMS quality reporting program prior to sending to CMS.

Select a Program for Validation: HQR\_EHR

Add Files Validate Files Submit Test Files to CMS Submit Production Files to CMS Remove Selected Files

**File Details Table**

Select by file status:  
 All  New  Valid  Invalid  Submitted  Submission Failed

| File Selection           | File Name  | Status | Validation Details | Feedback File |
|--------------------------|--|--------|--------------------|---------------|
| <input type="checkbox"/> | 29ValidFiles_DischargeQ1-2016_Provider030088 HQR-EHR.zip     | New    |                    |               |
| <input type="checkbox"/> | 29ValidFiles_DischargeQ1-2016_Provider030088 HQR_EHR-IQR.zip | New    |                    |               |

# Validate Files

1. Select files for validation one of two ways:
  - a. Select one or more files from the file details table by clicking each of the check boxes next to each file under the **File Selection** column.
  - b. Select all files of a status type by clicking the corresponding status checkbox.

**Pre-Submission Validation Application (PSVA)**

The Pre-Submission Validation Application allows you to validate files for your CMS quality reporting program prior to sending to CMS.

Select a Program for Validation:

**File Details Table**

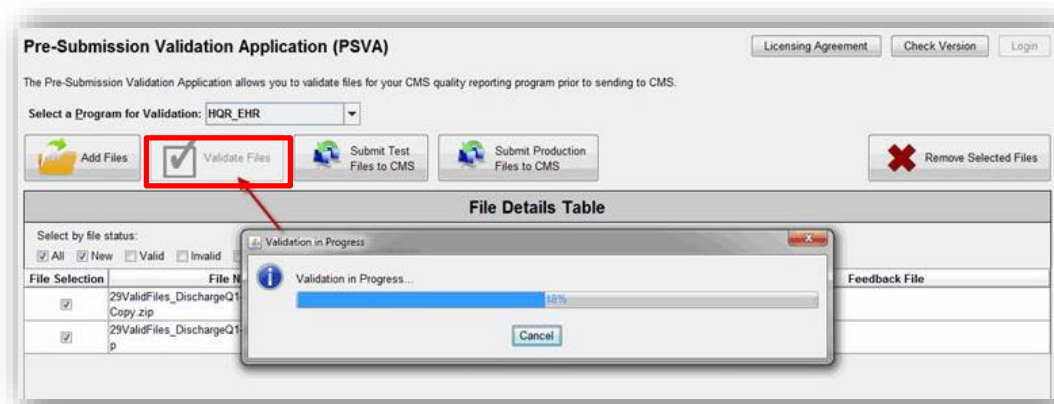
Select by file status:  
 All  New  Valid  Invalid  Submitted  Submission Failed

| File Selection           | File Name           | Status | Validation Details | Feedback File |
|--------------------------|---------------------|--------|--------------------|---------------|
| <input type="checkbox"/> | Mixed-Files.zip     | New    |                    |               |
| <input type="checkbox"/> | All-valid-files.zip | New    |                    |               |

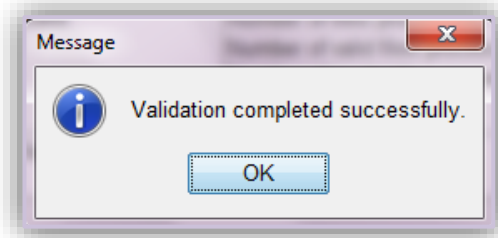
a. }

# Validate Files

2. Click the **[Validate Files]** button to validate the selected files.
  - a. During validation, a progress bar will be shown to indicate the progress of the validation.



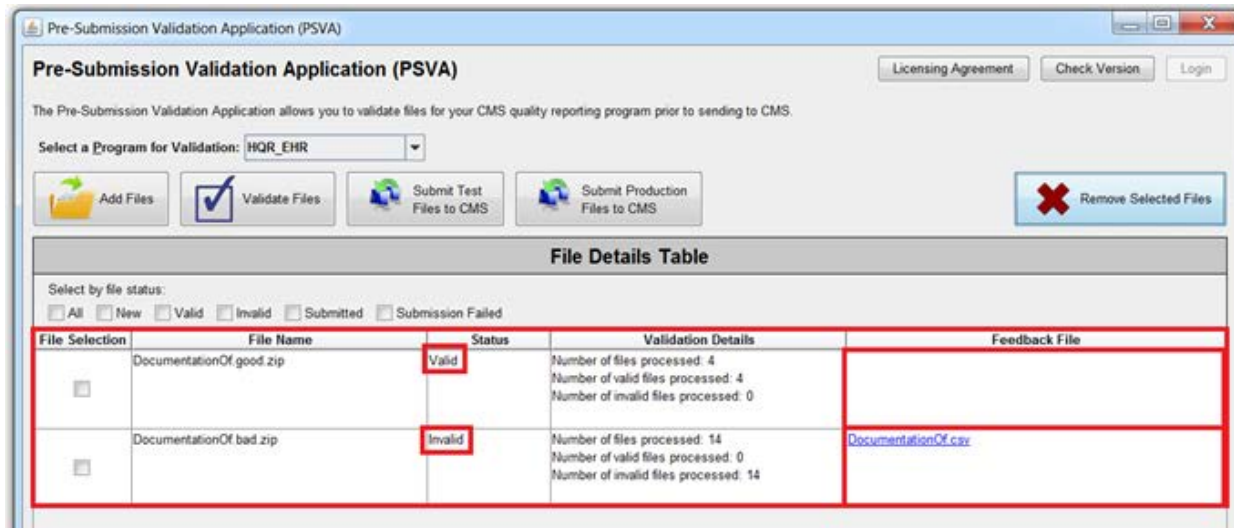
- b. After the validation is completed, the following pop-up will appear.



3. Click **[OK]**.

# Validate Files

- The File Details Table will be updated with the **Status of Validation** (Valid or Invalid) in the status column.



- A feedback file is generated for each of the ZIP files that are **invalid** and a hyperlink under the Feedback File column is provided.
  - The hyperlink can be clicked to open the feedback file and view the results/feedback of the file validation.

# Validate Files

6. Below is an example of a feedback file that will be generated for invalid files.

|    | A  | B            | C   |
|----|--|--------------|---|
| 1  | Summary: 5 files processed, 0 files valid, 5 files invalid |              |   |
| 2  | Validated with: HQR_EHR version 12.0                       |              |   |
| 3  |  |              |   |
| 4  | File Name  | Message Type | Feedback Message  |
| 5  | CMS_0025_root_2018.xml                                     | ERROR        | This id SHALL contain exactly one [1..1] @root="2.16.840.1.113883.3.249.7" (CONF:CMS_0025).                   |
| 6  | CONF3265-16705_C01_Id_2018.xml                             | ERROR        | This intendedRecipient SHALL contain exactly one [1..1] id (CONF:3265-16705_C01).                             |
| 7  | CONF3265-16704_IntendedReceipient_2018.xml                 | ERROR        | The informationRecipient, if present, SHALL contain exactly one [1..1] intendedRecipient (CONF:1198-5566).    |
| 8  | CONF3265-16704_IntendedReceipient_2018.xml                 | ERROR        | The informationRecipient, if present, SHALL contain exactly one [1..1] intendedRecipient (CONF:3265-16704).   |
| 9  | CMS_0026_extension_2018.xml                                | ERROR        | This id SHALL contain exactly one [1..1] @extension, which SHALL be selected from ValueSet QRDA-I CMS Program |
| 10 | CONF3265-16703_C01_InformationReceipient_2018.xml          | ERROR        | SHALL contain exactly one [1..1] informationRecipient (CONF:3265-16703_C01).                                  |
| 11 |  |              |   |

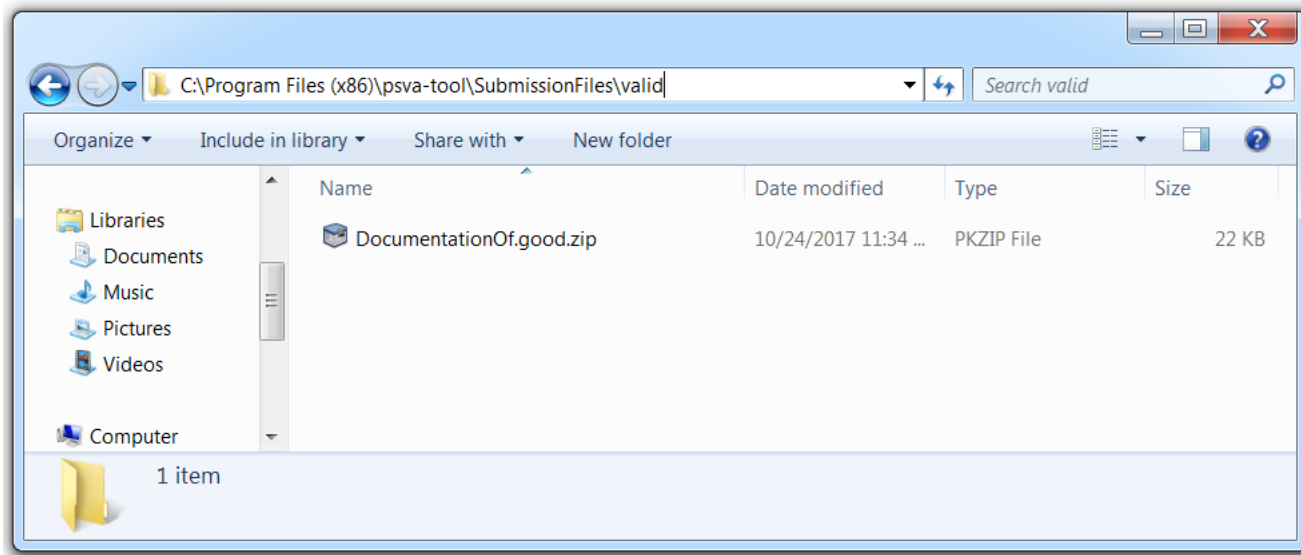


# Save Validated Files

If you would like to save the files that you have validated you can copy or cut and move them within Windows File Explorer.

The validated files can be located at the following path:

*<PSVA-folder-location>psva-tool\SubmissionFiles\valid*



# Submit Files

1. Select one or more valid files to submit to CMS.
2. Click either of the following:
  - a. **[Submit Test Files to CMS]** button  
Submits validated files to the CMS **Test** directory for the selected program
  - b. **[Submit Production Files to CMS]** button to start submission process  
Submits validated files to the CMS **Production** directory for the selected program

Pre-Submission Validation Application (PSVA)

The Pre-Submission Validation Application allows you to validate files for your CMS reporting program prior to sending to CMS.

Select a Program for Validation: HQR\_EHR

Add Files Validate Files Submit Test Files to CMS Submit Production Files to CMS Remove Selected Files

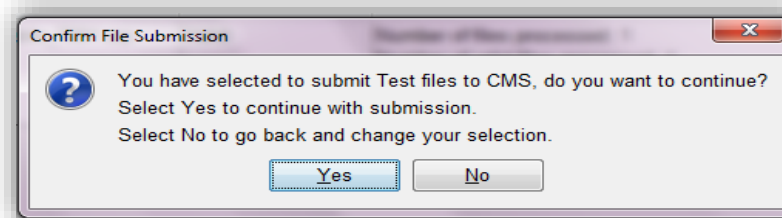
**File Details Table**

Select by file status:  
 All  New  Valid  Invalid  Submitted  Submission Failed

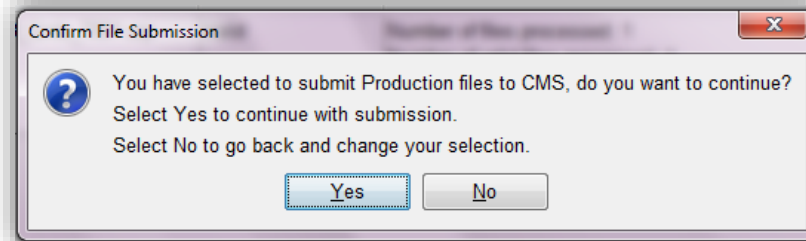
| File Selection                      | File Name            | Status  | Validation Details  | Feedback File                   |
|-------------------------------------|----------------------|---------|---|---------------------------------|
| <input checked="" type="checkbox"/> | Mixed-Files.good.zip | Valid   | Number of files processed: 2<br>Number of valid files processed: 2<br>Number of invalid files processed: 0                          |                                 |
| <input type="checkbox"/>            | Mixed-Files.bad.zip  | Invalid | Number of files processed: 1<br>Number of valid files processed: 0<br>Number of invalid files processed: 1                          | <a href="#">Mixed-Files.csv</a> |
| <input checked="" type="checkbox"/> | All-valid-files.zip  | Valid   | Number of files processed: 16<br>Number of valid files processed: 16<br>Number of invalid files processed: 0<br>Elapsed Time: 3 sec |                                 |

# Submit Files

3. If you submit **test** files, the following confirmation dialog will appear:



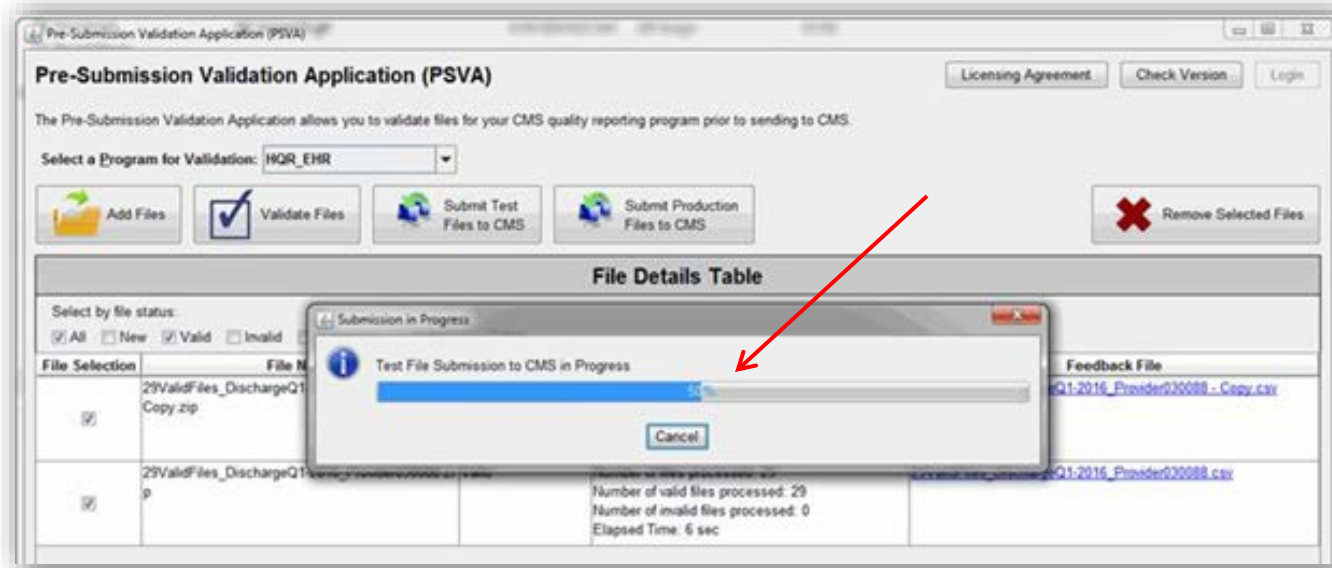
4. If you submit **production** files, the following confirmation dialog will appear:



5. Click **[Yes]** to continue the submission.

# Submit Files

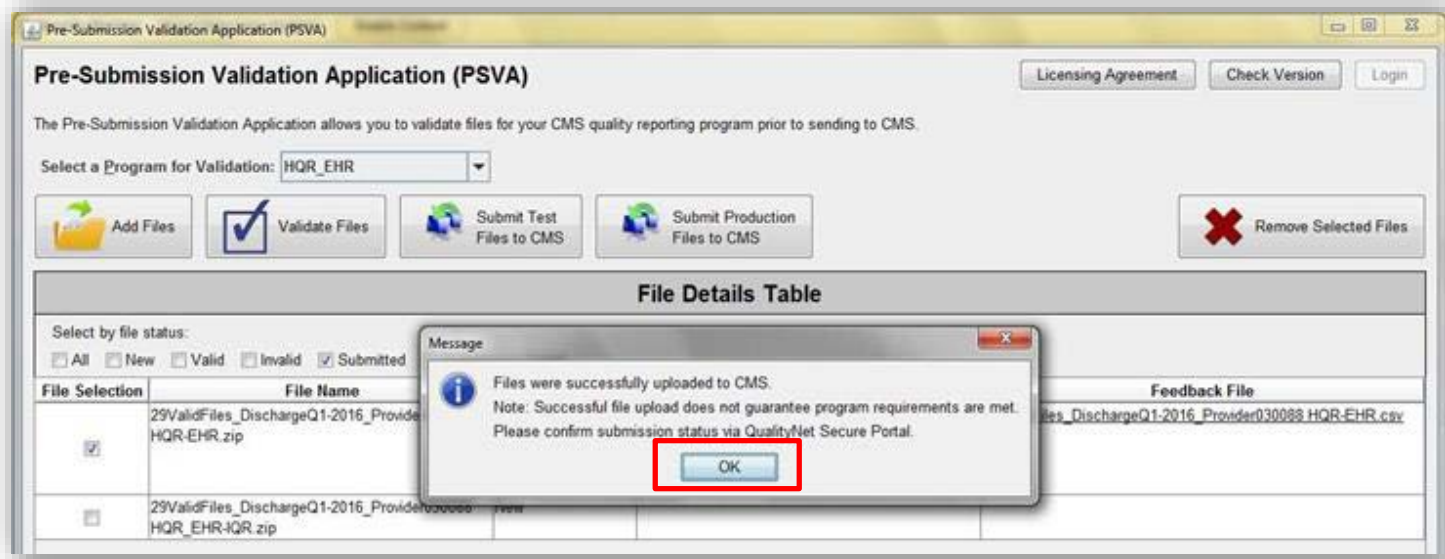
- A progress bar will appear to show the progress of the Submission process.



- Once the files are successfully submitted, the File Details Table will be updated with the status of the file as **Submitted**.

# Submit Files

## 8. Click [OK].

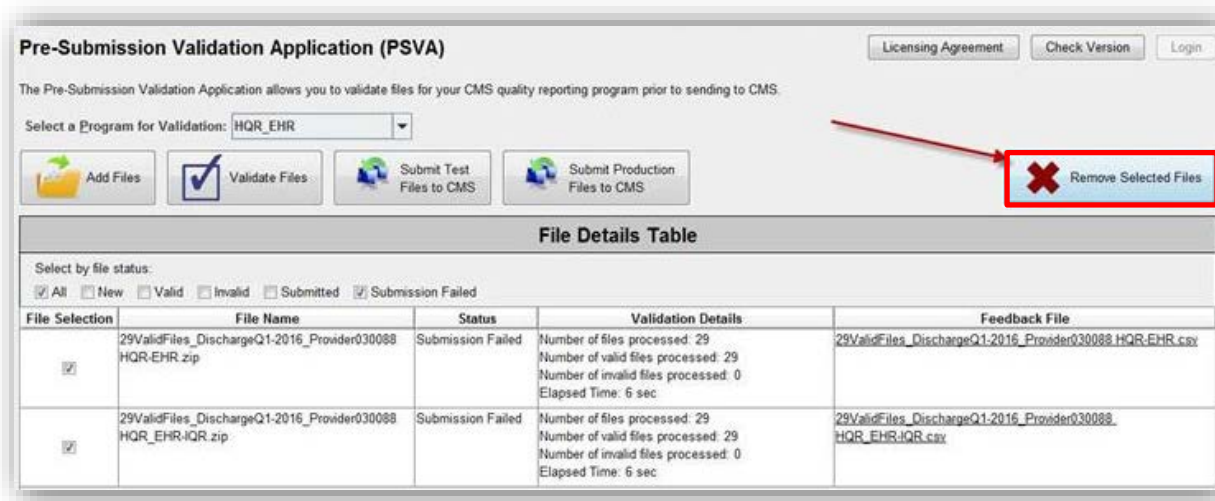


- a. If the submission process fails, the File Details Table will be updated with the status of the file as **Submission Failed**.

| File Selection                      | File Name  | Status            | Validation Details  | Feedback File  |
|-------------------------------------|--|-------------------|---|--|
| <input checked="" type="checkbox"/> | 29ValidFiles_DischargeQ1-2016_Provider030088 HQR-EHR.zip | Submission Failed | Number of files processed: 29<br>Number of valid files processed: 29<br>Number of invalid files processed: 0<br>Elapsed Time: 6 sec | 29ValidFiles_DischargeQ1-2016_Provider030088 HQR-EHR.csv |

# Remove Files

Remove files by selecting one or more files and clicking the **[Remove Selected Files]** button.



After the files are deleted successfully, the following confirmation dialog will appear.



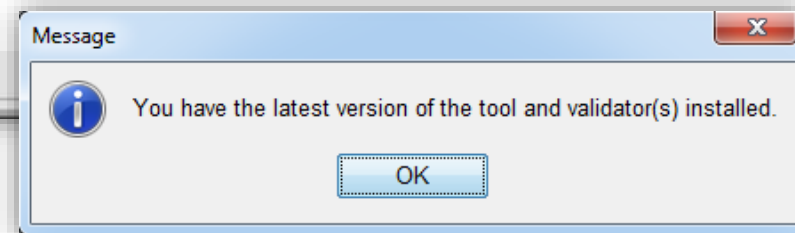
# On-Demand Version Check

Check the version being used by the validators at any time by clicking the **[Version Check]** button within the PSVA tool.

**NOTE:** The application does not work with an out-of-date tool version. A user is allowed to validate a file using an out-of-date validator but cannot submit files to CMS.

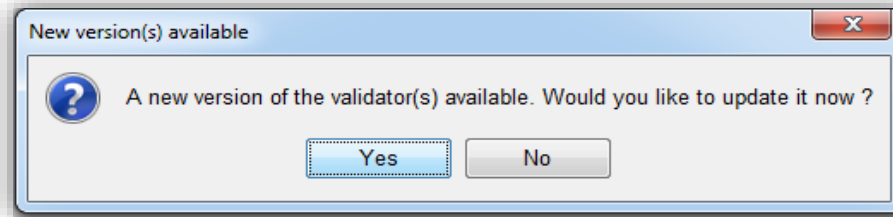


If the tool and the validator's version are current, the following message will display:

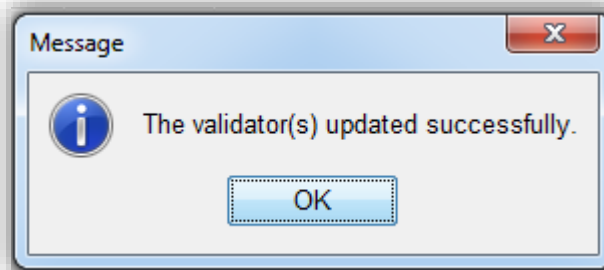


# Update the Validators

1. If there is an update available to one or more validators, the user will be prompted with an option to update the validator(s).



2. If the user chooses not to update the validator, the user will have the option of validating the files, using an older version of the validator.
  - a. Files validated using an older version of the validator cannot be submitted to CMS.
  - b. If the user chooses to update the validator(s), the PSVA tool will automatically update the validator(s).
3. After a successful update, the following validator updated successfully message will display.





# Update the PSVA Tool

1. If there is an update available for the PSVA tool, the user will be prompted with an option to update the tool.



2. The user can then download the newer version of the tool after logging in to the *QualityNet Secure Portal* Secure File Transfer.

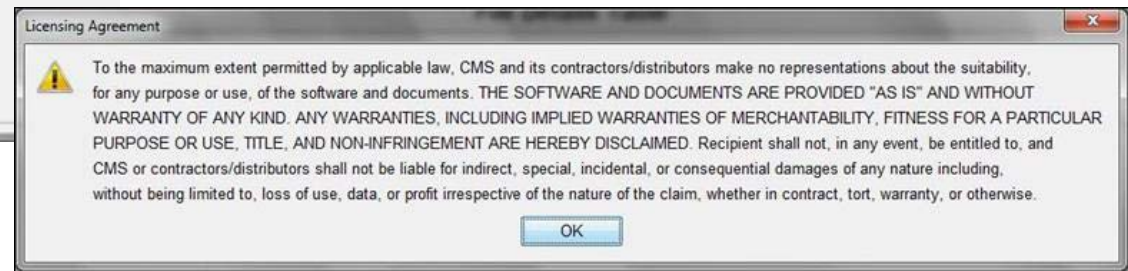
**NOTE:** If the user chooses not to update the tool when a newer version is available, the user will not be able to perform any functions within the PSVA tool.

# PSVA Licensing Agreement

Review the PSVA Licensing Agreement by clicking the **[Licensing Agreement]** button within the PSVA tool.



Clicking the **[Licensing Agreement]** button will cause the PSVA Licensing Agreement to appear.



PSVA Overview for eCQM Data Submission in CY 2018

---

## **Resources**

# Support Resources

| Topic  | Who to Contact   | How to Contact  |
|--|--|---|
| Hospital IQR Program and Policy  | Hospital Inpatient Support Team  | (844) 472-4477<br><a href="https://cms-ip.custhelp.com">https://cms-ip.custhelp.com</a>   |
| Promoting Interoperability Program*<br>(objectives, attestation, and policy)                             | <i>QualityNet</i> Help Desk  | (866) 288-8912<br><a href="mailto:qnetsupport@hcqis.org">qnetsupport@hcqis.org</a>  |
| eCQM specifications<br>(code sets, measure logic, and measure intent)                                    | Office of the National Coordinator<br>for Health Information Technology<br>(ONC) JIRA Issue Trackers | eCQM Issue Tracker<br><a href="https://oncprojecttracking.healthit.gov/support/projects/CQM/summary">https://oncprojecttracking.healthit.gov/support/projects/CQM/summary</a>   |
| QRDA-related questions<br>(CMS IG, sample files and Schematrons)   |  | QRDA Issue Tracker<br><a href="https://oncprojecttracking.healthit.gov/support/projects/QRDA/issues/QRDA-313?filter=allopenissues">https://oncprojecttracking.healthit.gov/support/projects/QRDA/issues/QRDA-313?filter=allopenissues</a> |
| <i>QualityNet Secure Portal</i><br>(reports, PSVA tool, uploading data, and troubleshooting file errors) | <i>QualityNet</i> Help Desk  | (866) 288-8912<br><a href="mailto:qnetsupport@hcqis.org">qnetsupport@hcqis.org</a>  |
| eCQM data validation   | Validation Support Team  | <a href="mailto:validation@hcqis.org">validation@hcqis.org</a> or<br><a href="https://cms-ip.custhelp.com">https://cms-ip.custhelp.com</a>  |

\*Previously known as the EHR Incentive Program

PSVA Overview for eCQM Data Submission in CY 2018

---

## **Question and Answer Session**

# Disclaimer

This presentation was current at the time of publication and/or upload onto the *Quality Reporting Center* and *QualityNet* websites. Medicare policy changes frequently. Any links to Medicare online source documents are for reference use only. In the case that Medicare policy, requirements, or guidance related to this presentation change following the date of posting, this presentation will not necessarily reflect those changes; given that it will remain as an archived copy, it will not be updated.

This presentation was prepared as a service to the public and is not intended to grant rights or impose obligations. Any references or links to statutes, regulations, and/or other policy materials included in the presentation are provided as summary information. No material contained therein is intended to take the place of either written laws or regulations. In the event of any conflict between the information provided by the presentation and any information included in any Medicare rules and/or regulations, the rules and regulations shall govern. The specific statutes, regulations, and other interpretive materials should be reviewed independently for a full and accurate statement of their contents.