



Inpatient Psychiatric Facilities Quality Reporting (IPFQR) Program FY 2022 Data Review

Evette Robinson, MPH, CPHQ

Program Lead, IPFQR Program

Inpatient Value, Incentives, and Quality Reporting (VIQR)

Outreach and Education Support Contractor

October 14, 2021

Purpose

This presentation provides a review of the fiscal year (FY) 2022 Inpatient Psychiatric Facility Quality Reporting (IPFQR) Program measure and non-measure data results.

Objectives

Participants will understand the FY 2022 IPFQR Program measure and non-measure data results.

Webinar Questions

Please email any questions that are pertinent to the webinar topic to WebinarQuestions@hsag.com.

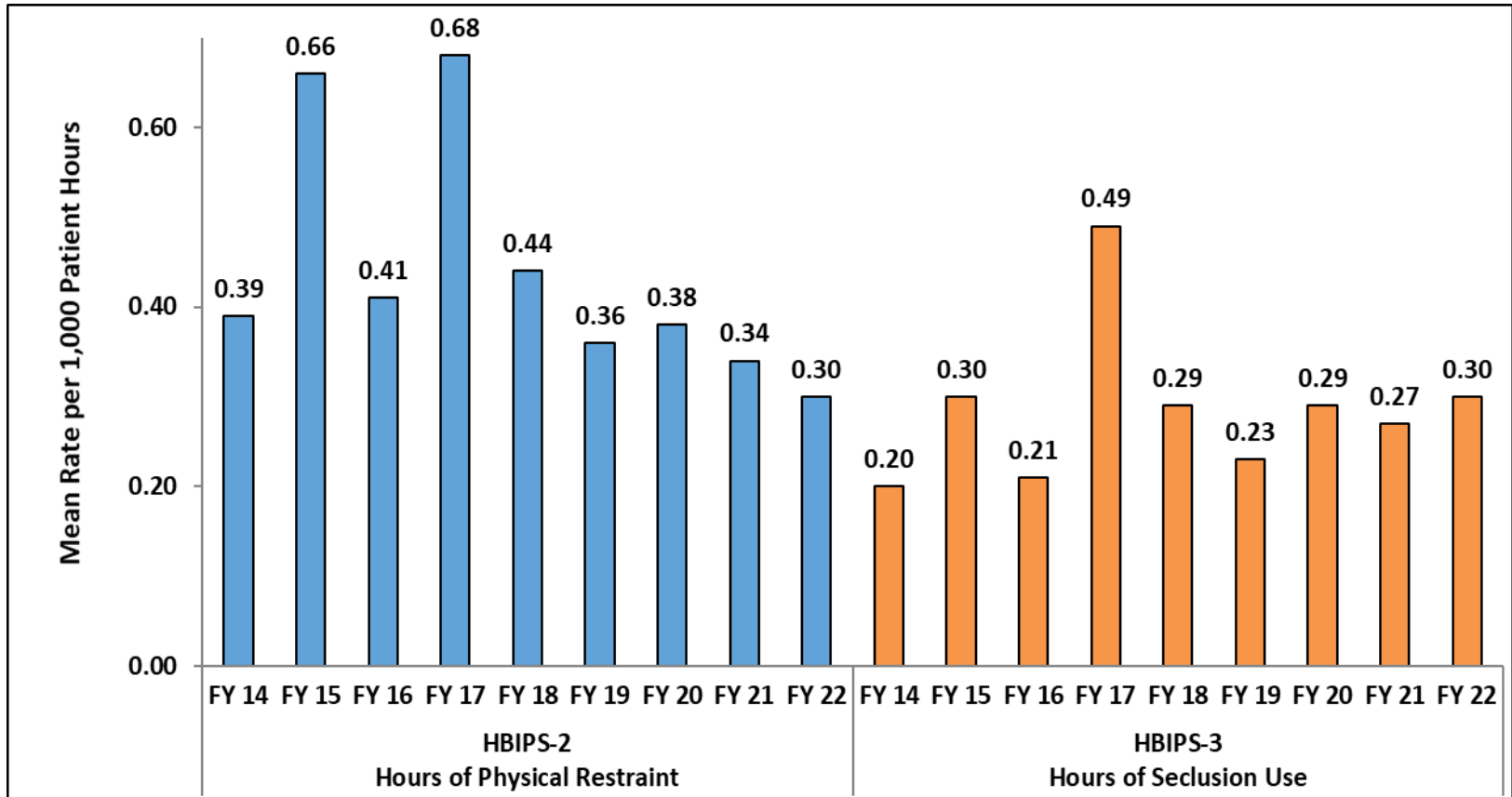
- Write “IPFQR Program FY 2022 Data Review” in the subject line.
- If your question pertains to a specific slide, include the slide number in the body of the email.

IPFQR Program FY 2022 Data Review

FY 2022 Measure and Non-Measure Results

HBIPS-2 and HBIPS-3

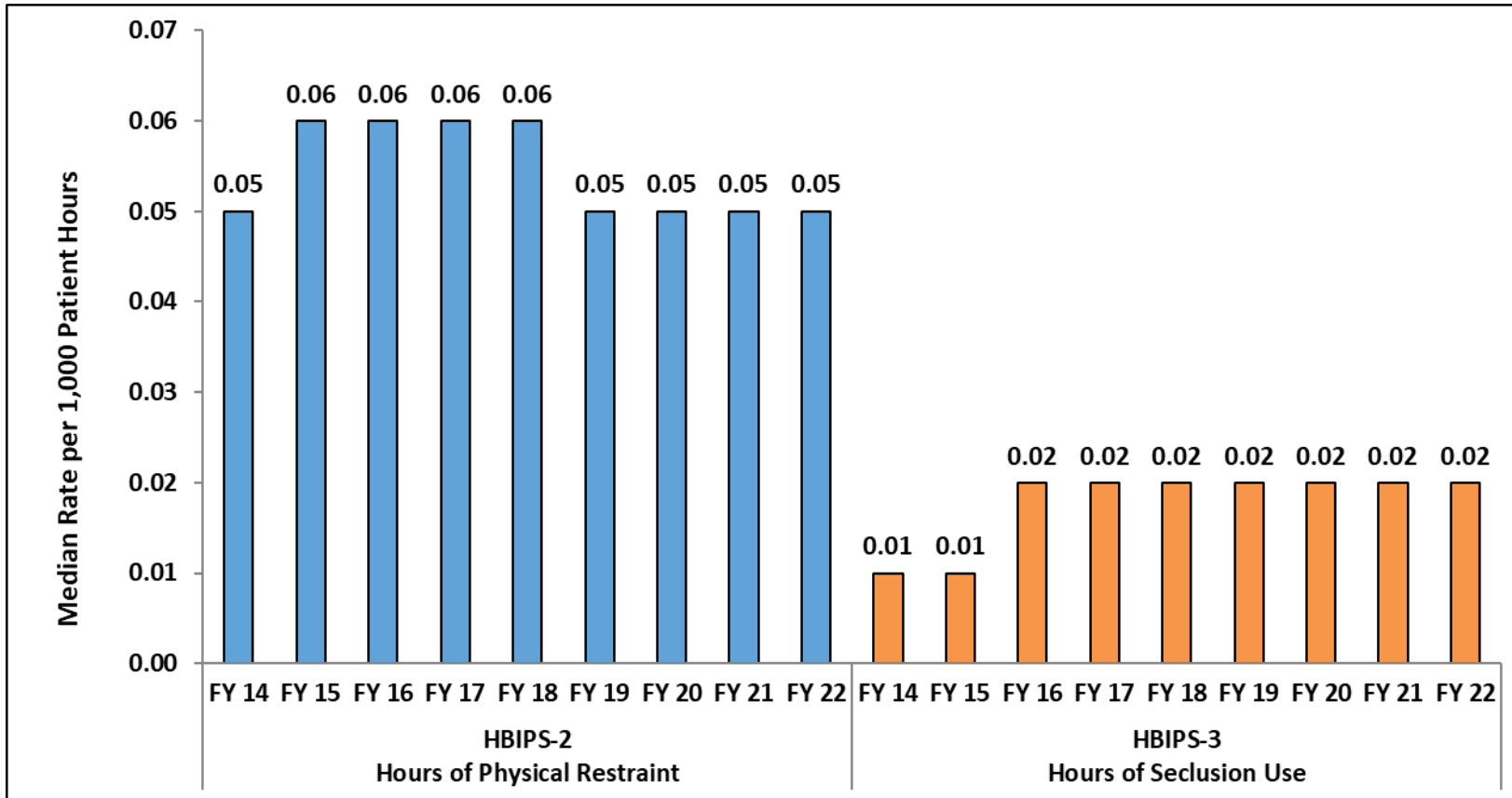
Measure Results: Mean Values



Note: Lower rates for the HBIPS-2 and HBIPS-3 measures indicate better performance.

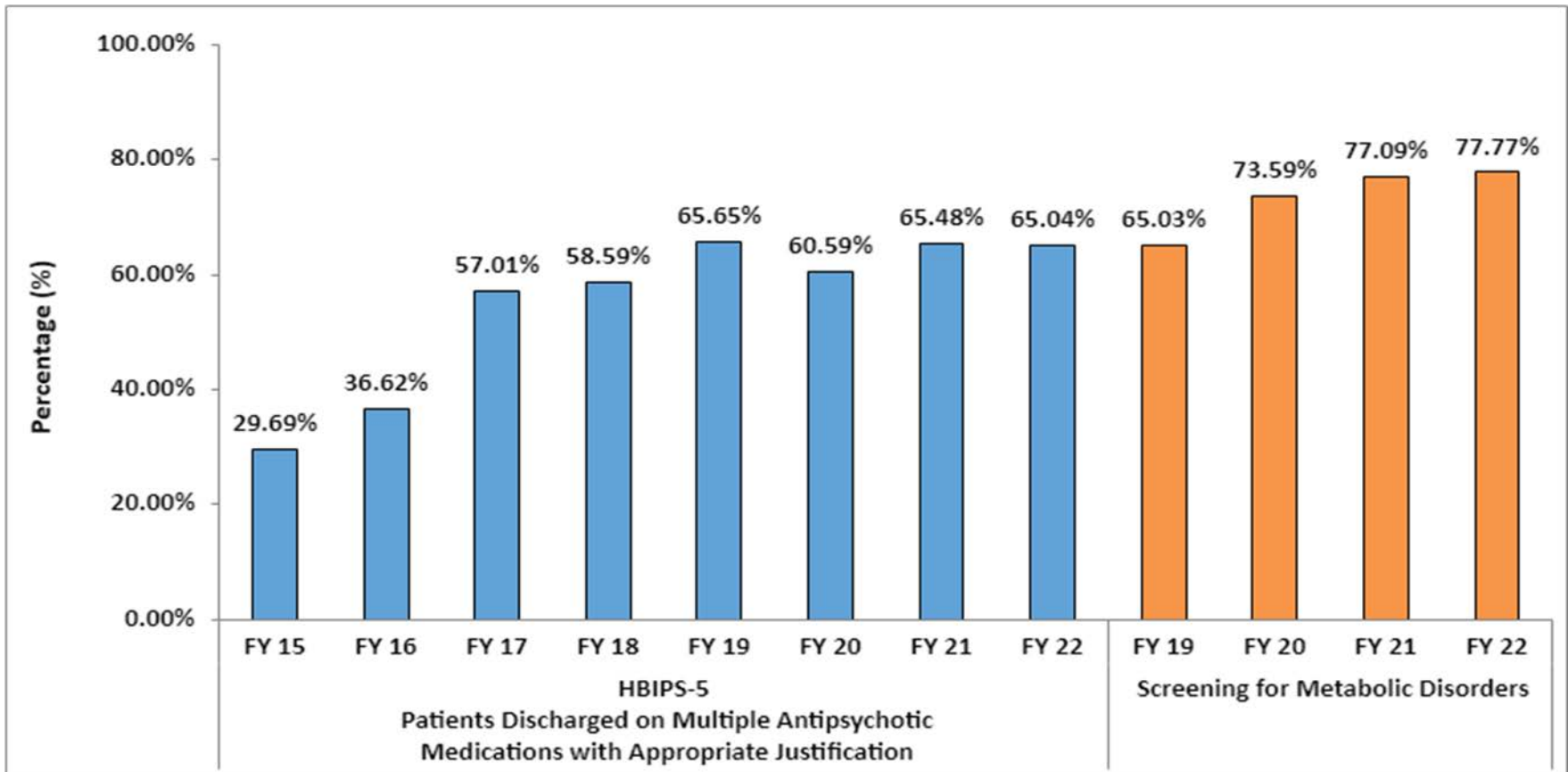
HBIPS-2 and HBIPS-3

Measure Results: Median Values



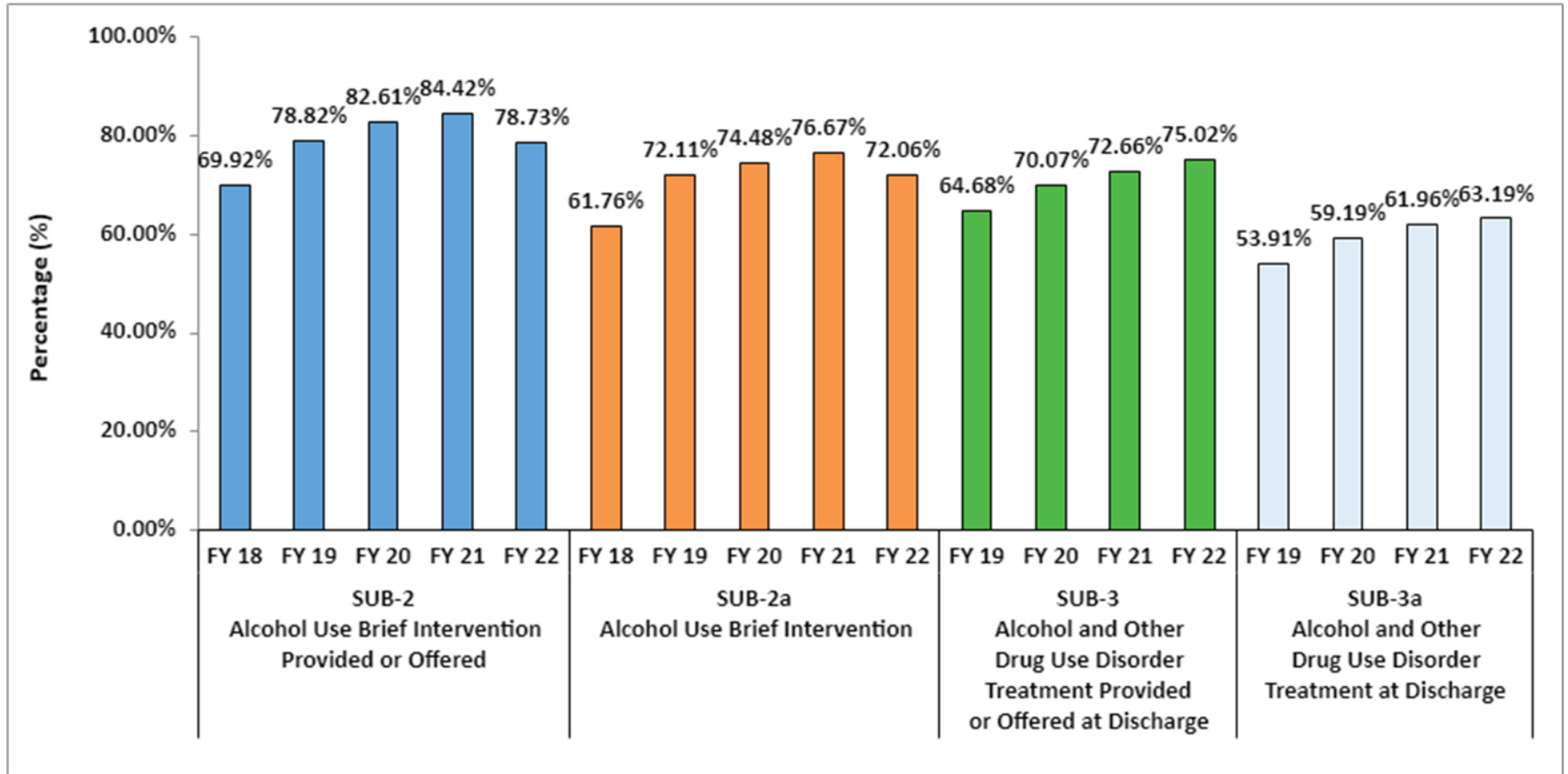
Note: Lower rates for the HBIPS-2 and HBIPS-3 measures indicate better performance.

HBIPS-5 and Screening for Metabolic Disorder Measure Results



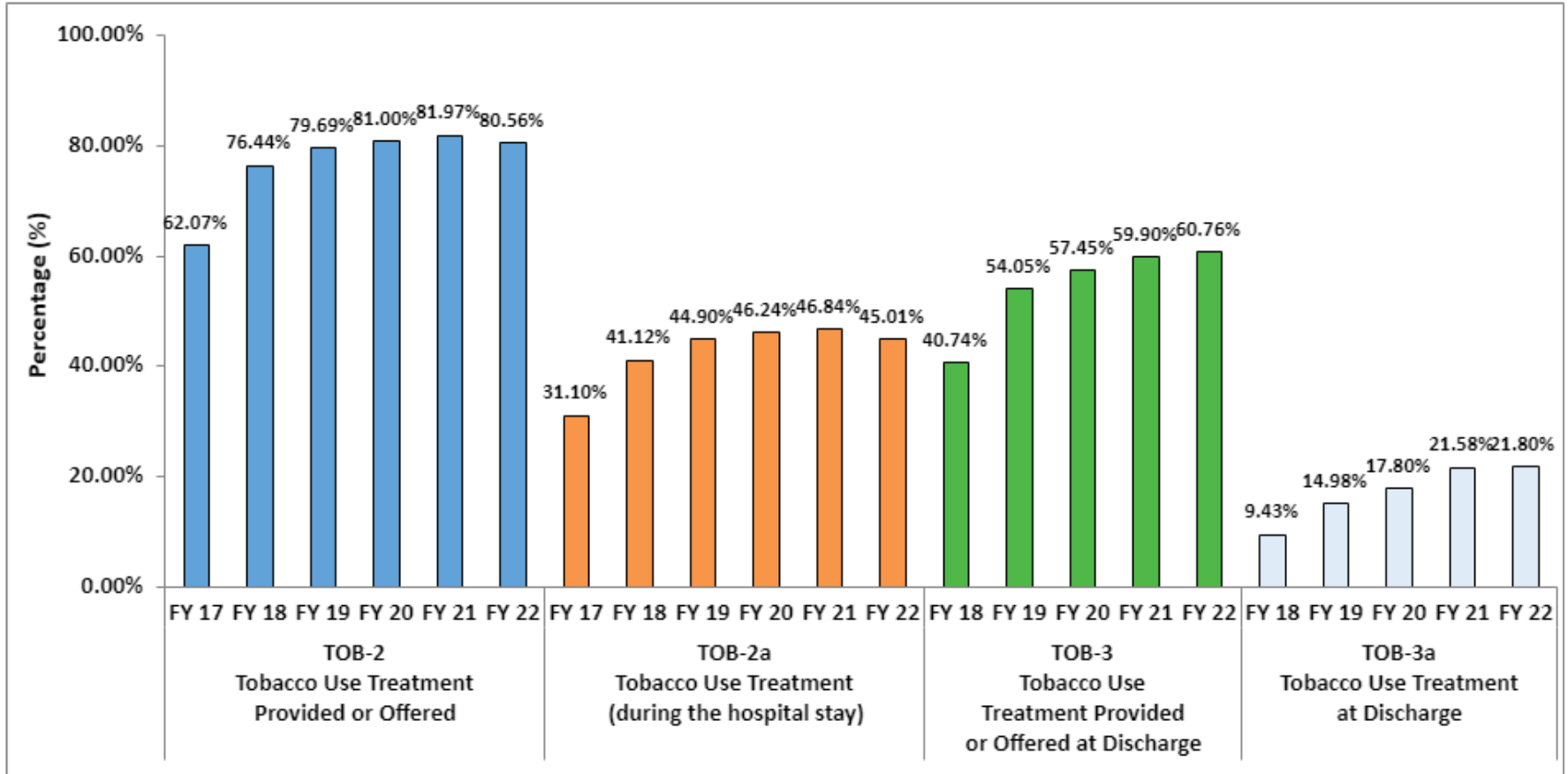
Note: Higher rates for the HBIPS-5 and the Screening for Metabolic Disorders measures indicate better performance.

SUB-2/-2a, SUB-3/-3a Measure Results



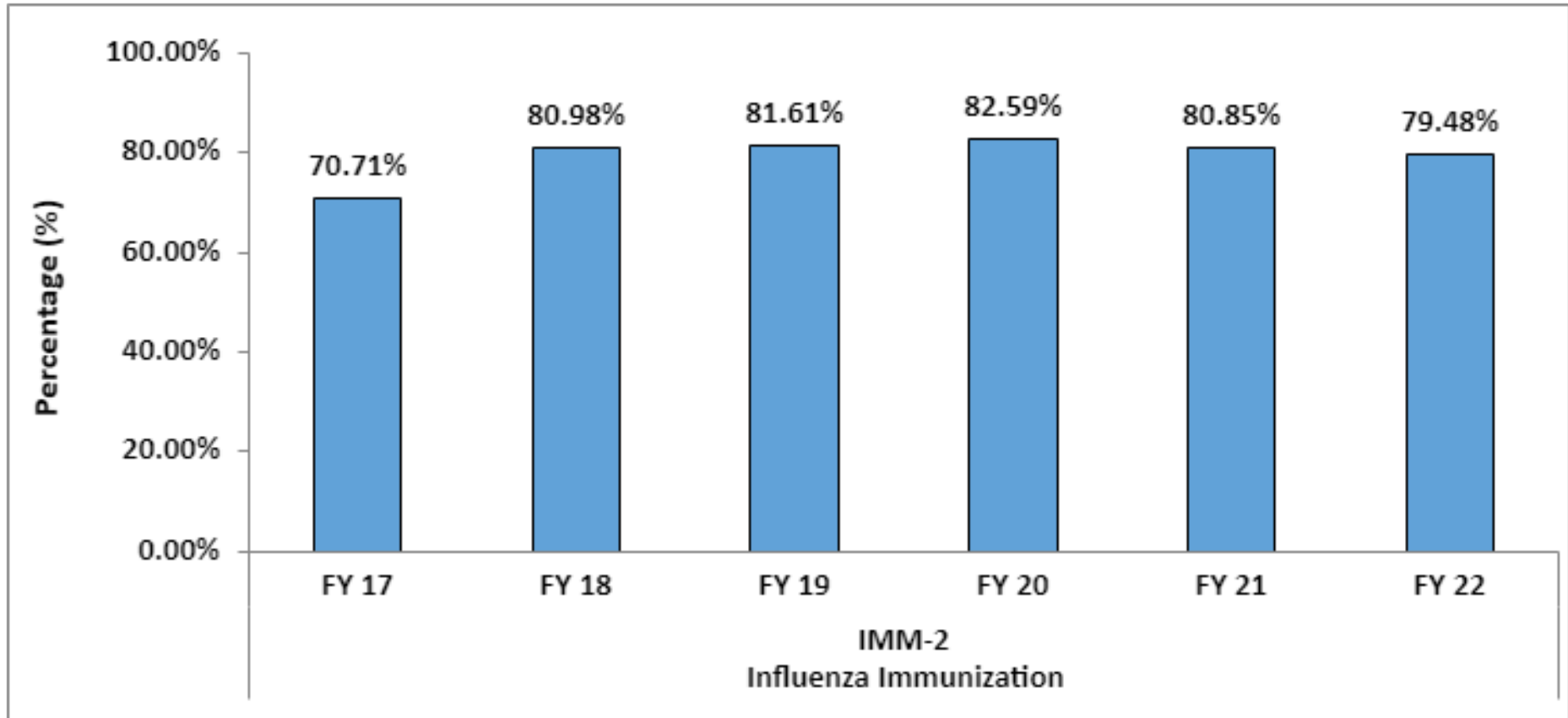
Note: Higher rates for the SUB-2/-2a and SUB-3/-3a measures indicate better performance.

TOB-2/-2a, TOB-3/-3a Measure Results



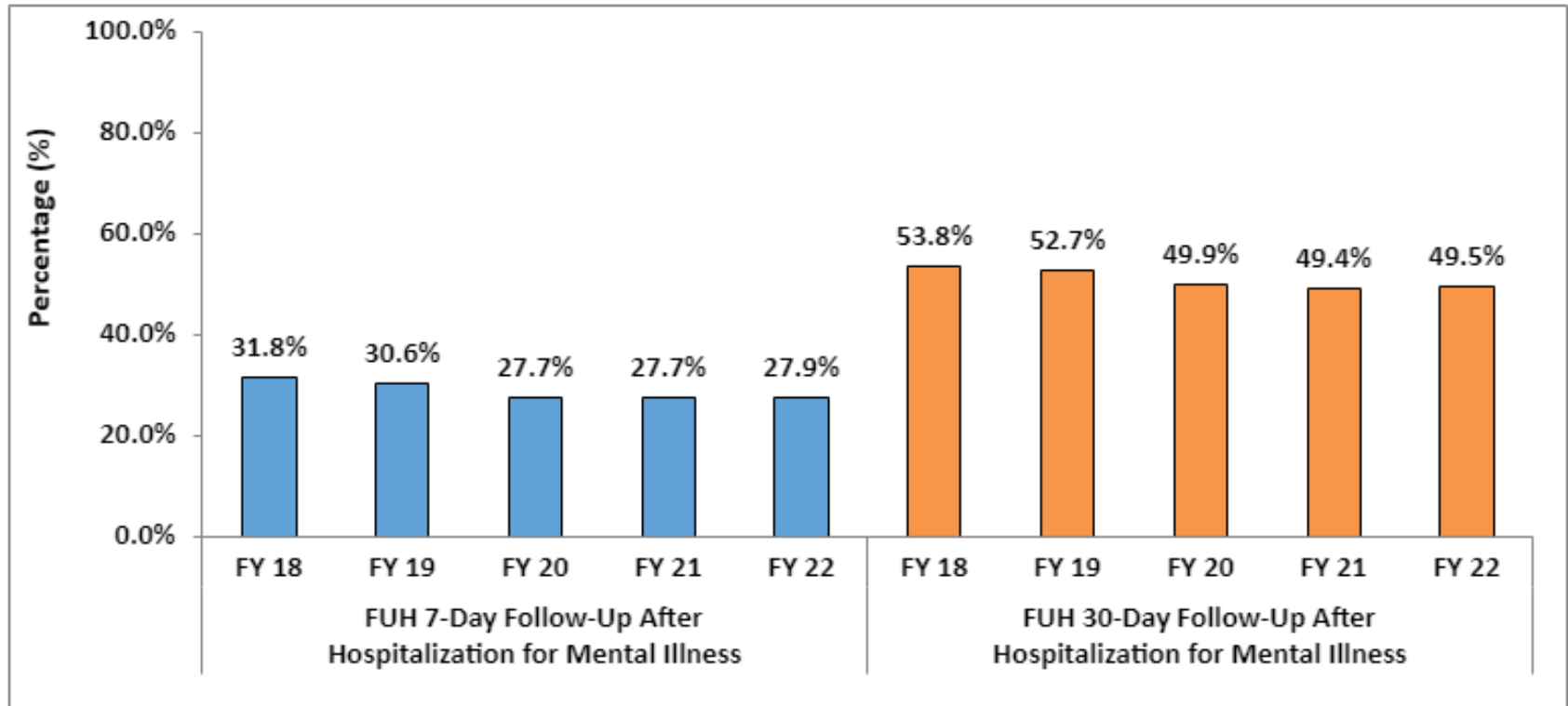
Note: Higher rates for the TOB-2/-2a and TOB-3/-3a measures indicate better performance.

IMM-2 Measure Results



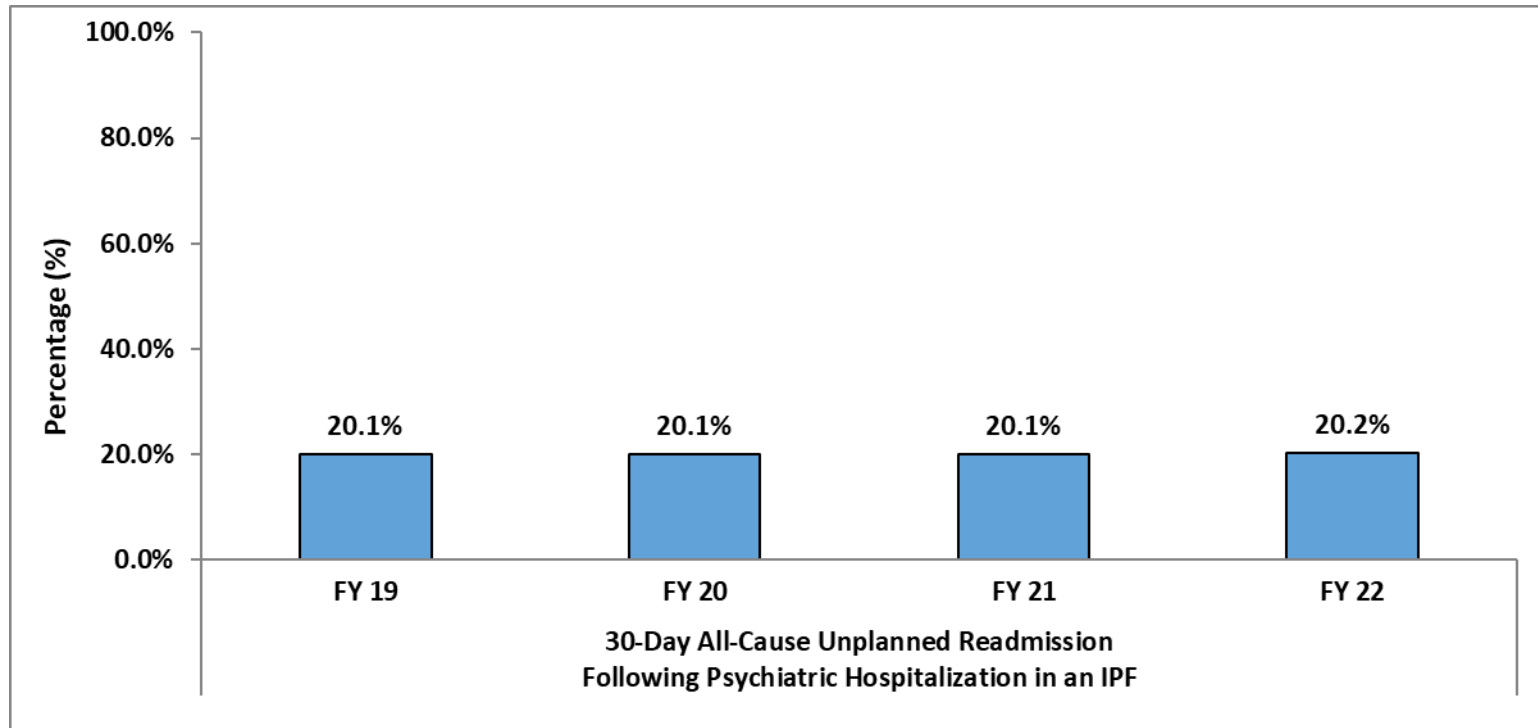
Note: Higher rates for the IMM-2 measure indicate better performance.

Follow-Up After Hospitalization for Mental Illness Measure Results (FUH)



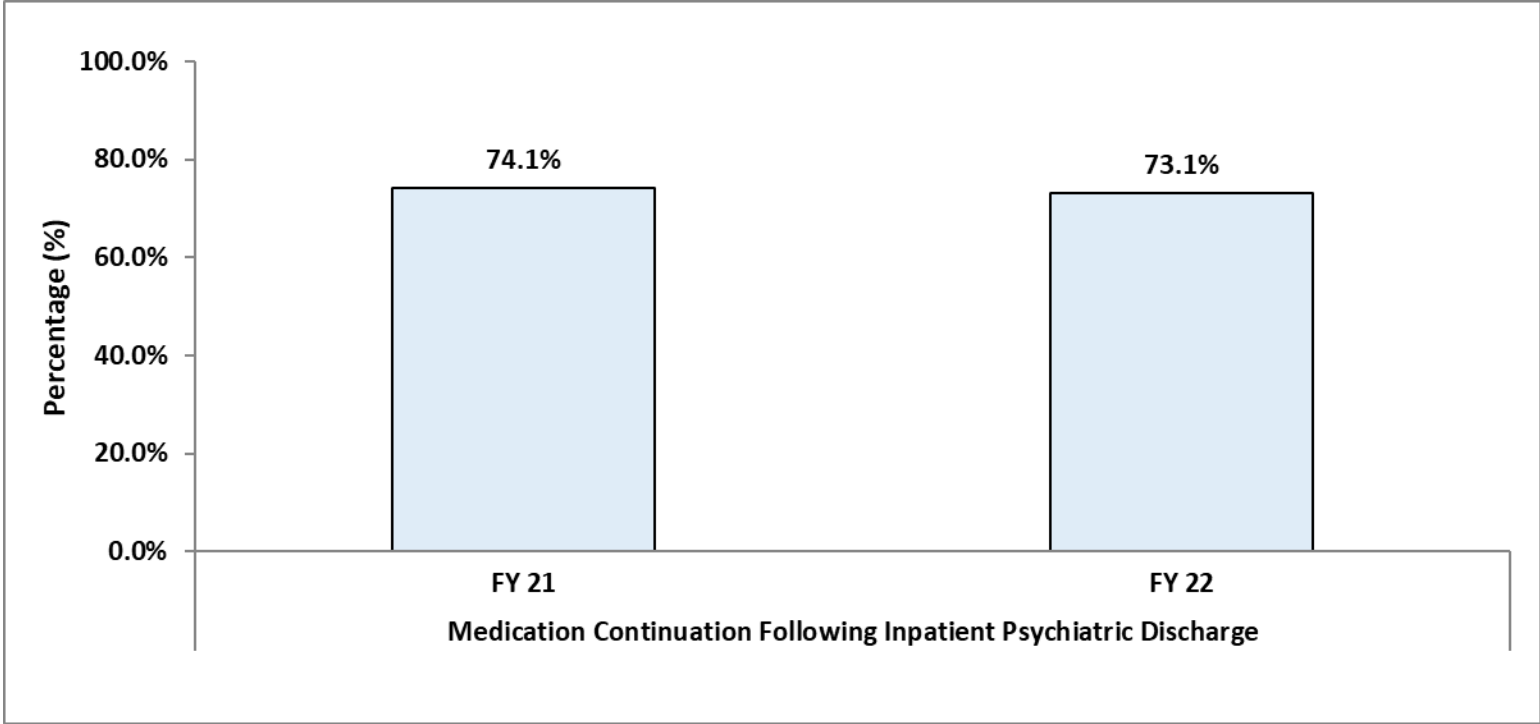
Note: Higher percentages for the FUH measure indicate better performance.

30-Day All-Cause Unplanned Readmission Following Psychiatric Hospitalization in an IPF Measure Results



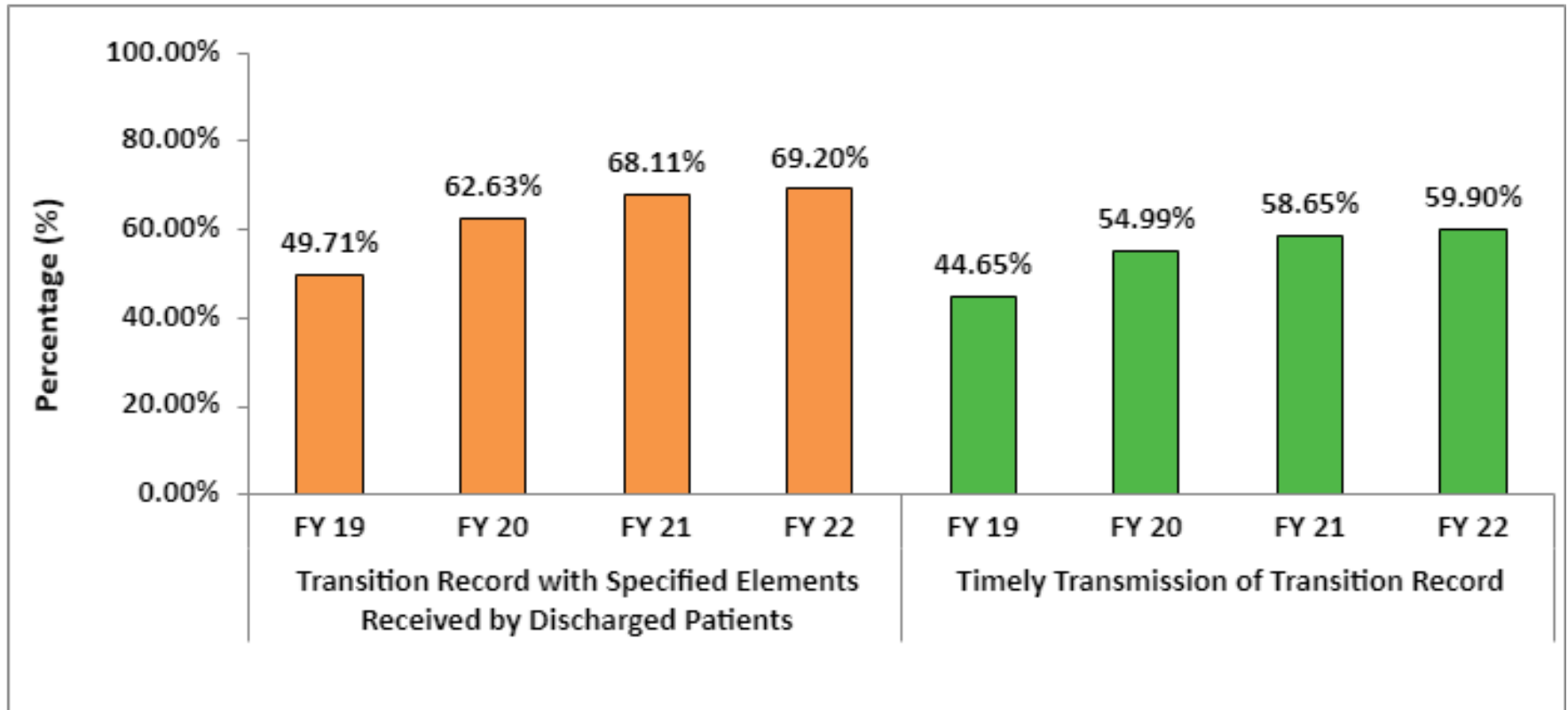
Note: Lower percentages for the IPF Readmission measure indicate better performance.

Medication Continuation Following Inpatient Psychiatric Discharge Measure Results



Note: Higher percentages for the Medication Continuation measure indicate better performance.

Transition Record Measures Results

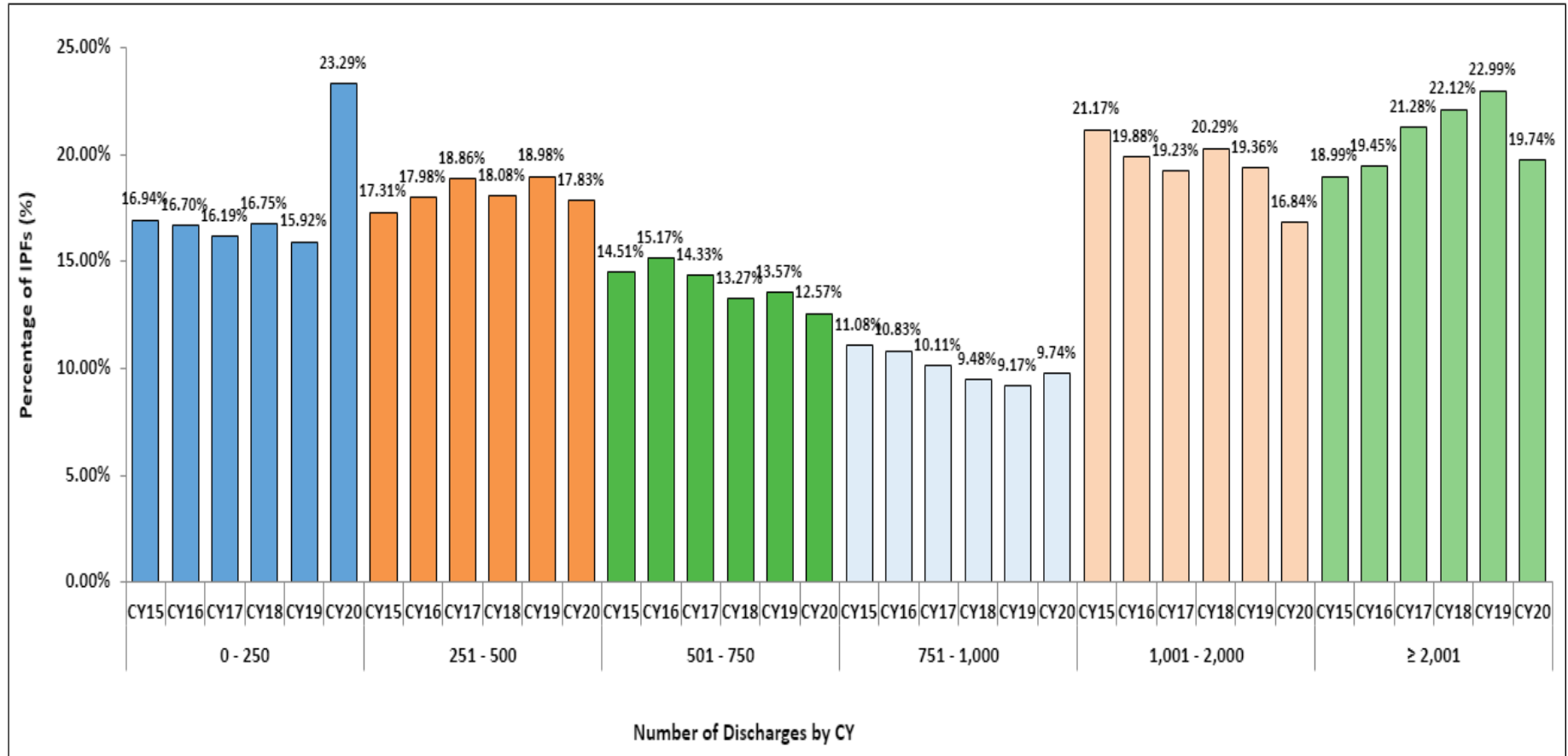


Note: Higher rates for the Transition Record measures indicate better performance.

CY 2020 Non-Measure Data

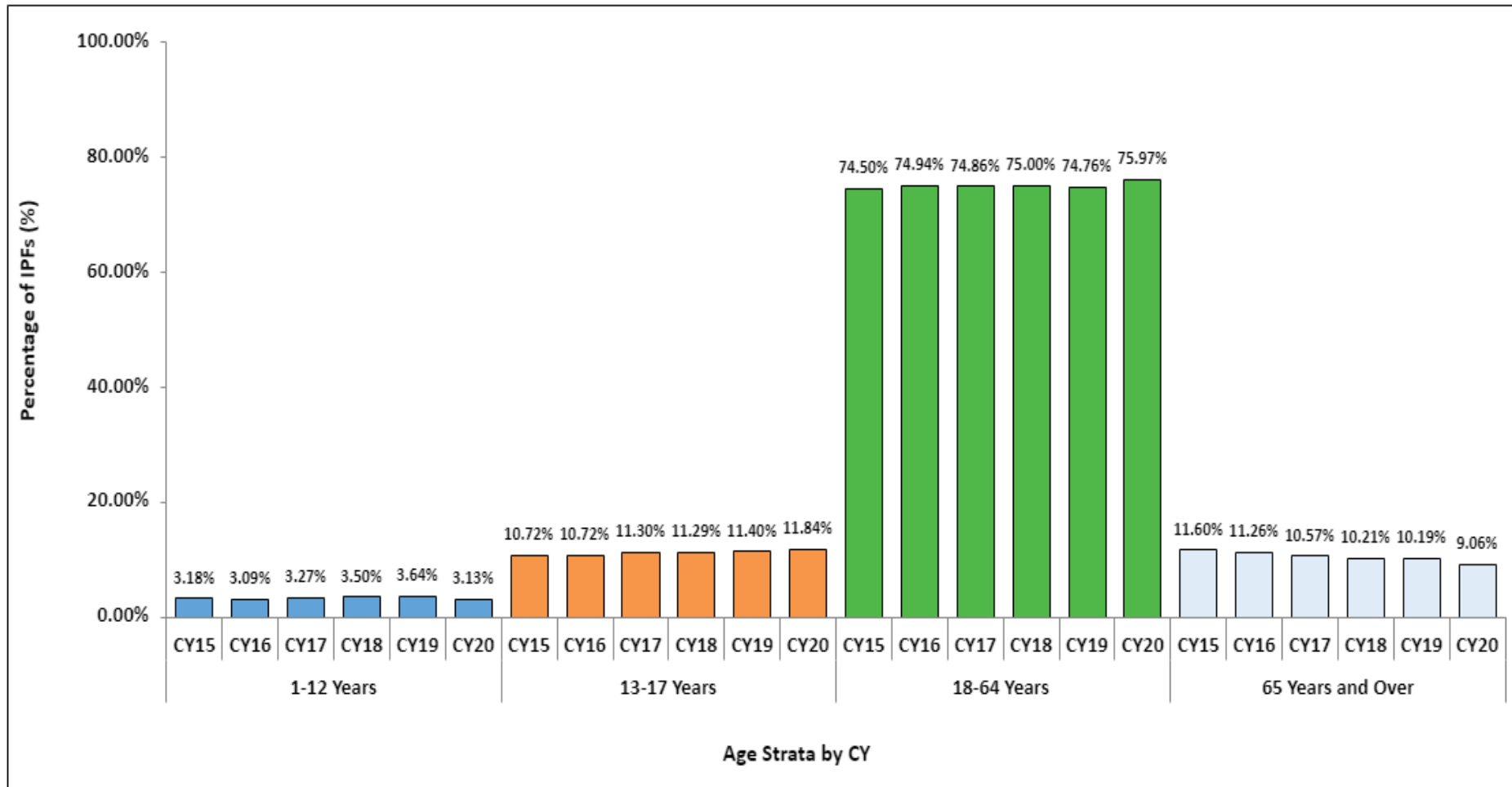
- Non-measure data that IPFs collected in CY 2020 and reported this year will be presented here for informational purposes only.
- The non-measure data will not appear in the *Hospital Compare* Preview Report nor be publicly reported.
- CMS will use this information to assess measure submissions for accuracy and to contribute to the development of new measures.

CY 2015–2020 Distribution of Total Discharges from IPFs

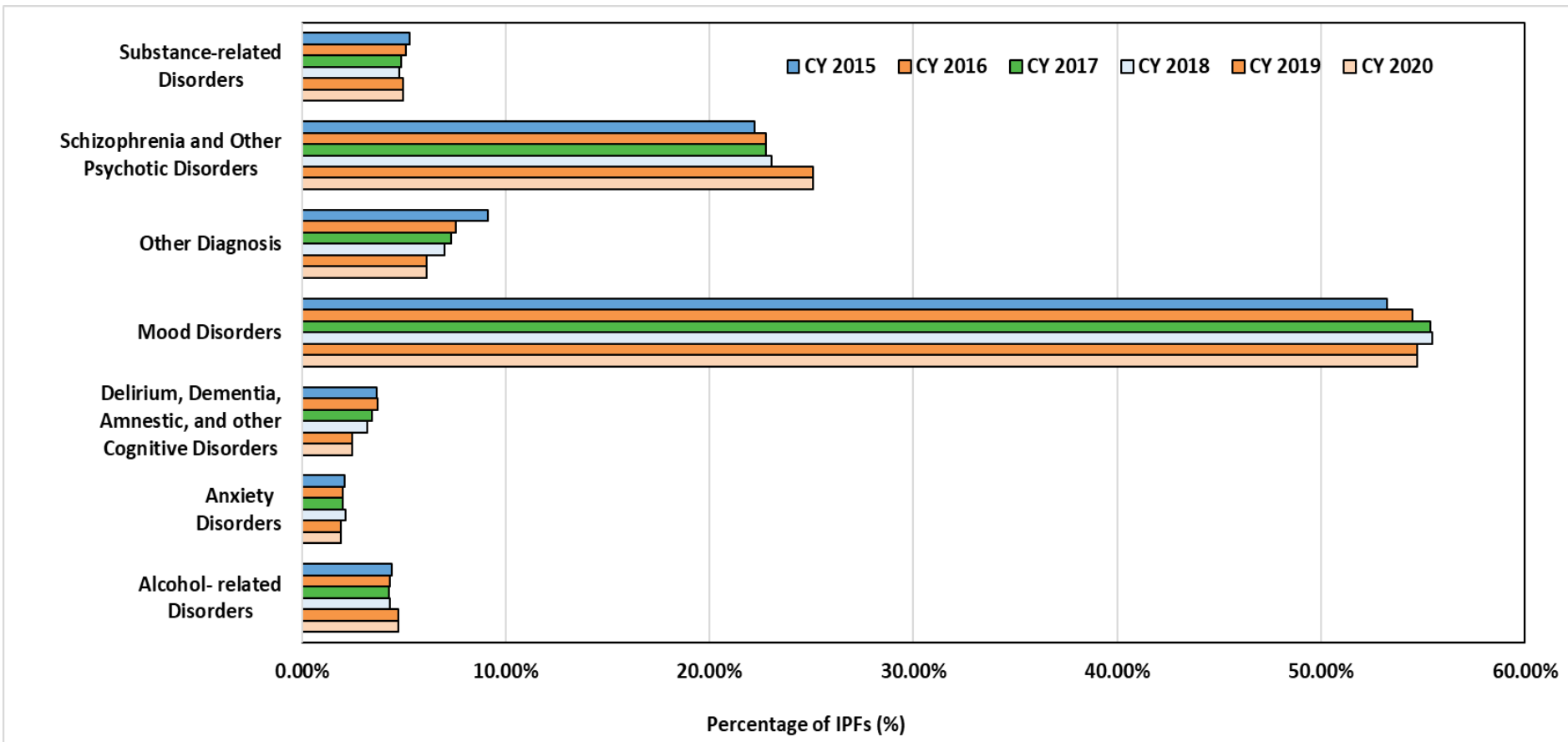


CY 2015–2020

Total Discharges by Age Group

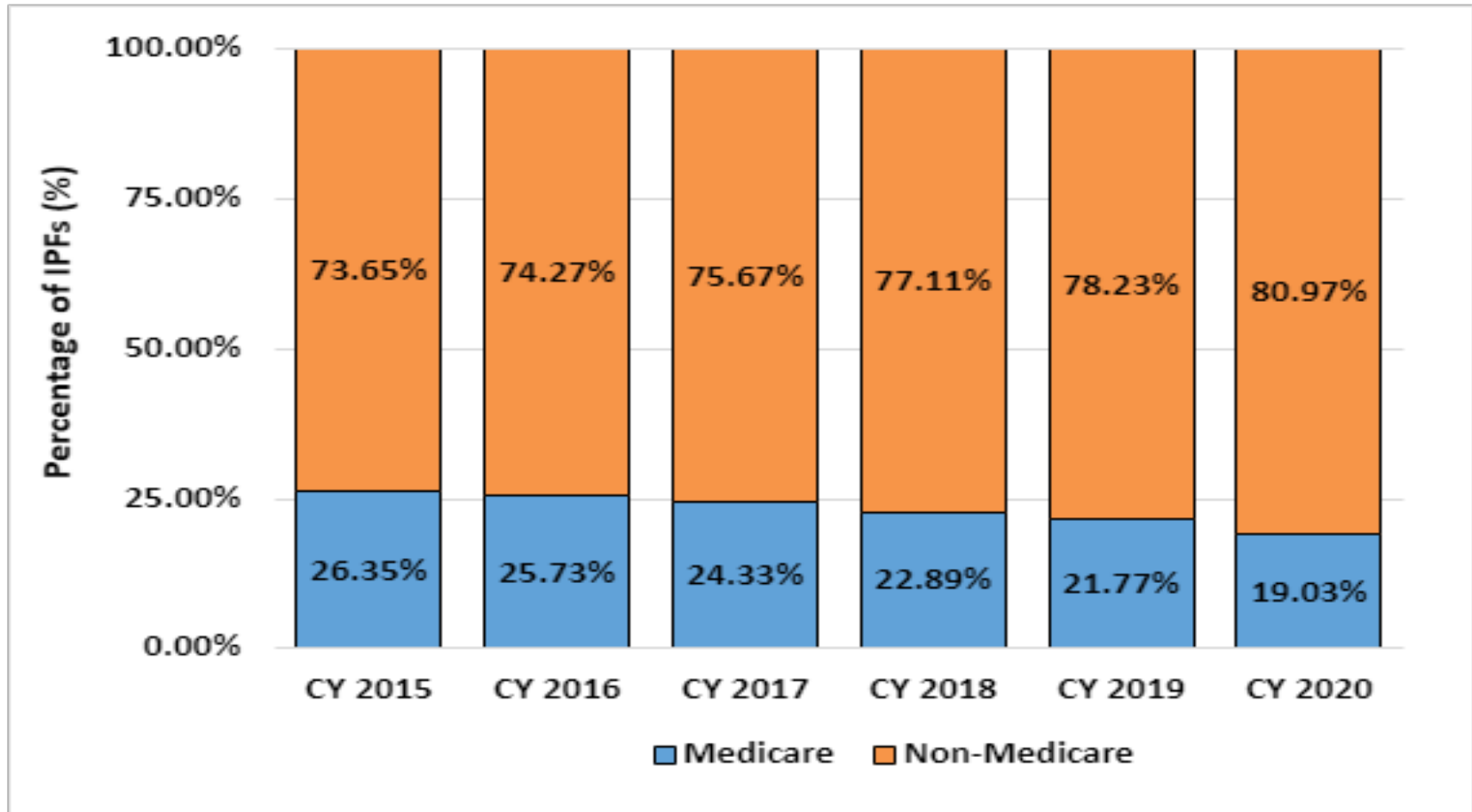


CY 2015–2020 Total Discharges by Diagnostic Group



CY 2015–2020

Total Discharges by Payer



IPFQR Program FY 2022 Data Review

A Look Ahead

Goodbye, retired measures

- IPFs will collect Timely Transmission of Transition Record measure data for the last time in CY 2021, which will be reported to CMS for during the summer of 2022.
- CY 2021 is also the last year that CMS will calculate rates for the Follow-Up After Hospitalization for Mental Illness measure.

Hello, new measures!

- Starting in October 2021 IPFs began to collect and report data for the COVID HCP measure and will continue to do so on a monthly basis through December 2021 to meet requirements for the FY 2023 payment determination.
 - IPFs will continue to report monthly COVID HCP data in subsequent calendar years, which will impact the FY payment determination two years in the future.
 - For example, CY 2022 (January 1, 2022–December 31, 2022) COVID HCP data will impact FY 2024 (October 1, 2023–September 30, 2024) payment determination.
- CMS will begin calculating the claims-based Follow-Up After Psychiatric Hospitalization measure for the FY 2024 payment determination onward.

Acronyms

CMS	Centers for Medicare & Medicaid Services	IPF	inpatient psychiatric facility
CY	calendar year	IPFQR	Inpatient Psychiatric Facility Quality Reporting
FUH	Follow-Up After Hospitalization for Mental Illness	Q&A	questions and answers
FY	fiscal year	SUB	Substance Use
HBIPS	Hospital-Based Inpatient Psychiatric Services	TOB	Tobacco Use
IMM-2	Influenza Immunization	VIQR	Value, Incentives, and Quality Reporting

IPFQR Program FY 2022 Data Review

Helpful Resources

Helpful Resources

**IPFQR Program Webpages
(Click the Icons)**



Helpful Resources

Stay up to date...



...and get answers to your questions.



Webinar Questions

Please email any questions that are pertinent to the webinar topic to WebinarQuestions@hsag.com.

- Write “IPFQR Program FY 2022 Data Review” in the subject line.
- If your question pertains to a specific slide, include the slide number in the body of the email.

IPFQR Program FY 2022 Data Review

Thank You

Disclaimer

This presentation was current at the time of publication and/or upload onto the *Quality Reporting Center* and *QualityNet* websites. Medicare policy changes frequently. Any links to Medicare online source documents are for reference use only. In the case that Medicare policy, requirements, or guidance related to this presentation change following the date of posting, this presentation will not necessarily reflect those changes; given that it will remain as an archived copy, it will not be updated.

This presentation was prepared as a service to the public and is not intended to grant rights or impose obligations. Any references or links to statutes, regulations, and/or other policy materials included in the presentation are provided as summary information. No material contained therein is intended to take the place of either written laws or regulations. In the event of any conflict between the information provided by the presentation and any information included in any Medicare rules and/or regulations, the rules and regulations shall govern. The specific statutes, regulations, and other interpretive materials should be reviewed independently for a full and accurate statement of their contents.