

# Welcome!

- **Audio for this event is available via GlobalMeet® Internet streaming.**
- **Connect via Chrome.**
- **No telephone line is required.**
- **Computer speakers or headphones are necessary to listen to streaming audio.**
- **Limited dial-in lines are available. Please request a dial-in line via the “Ask a Question” box.**
- **This event is being recorded.**



# Troubleshooting Audio

Audio from computer speakers breaking up?

Audio suddenly stop?

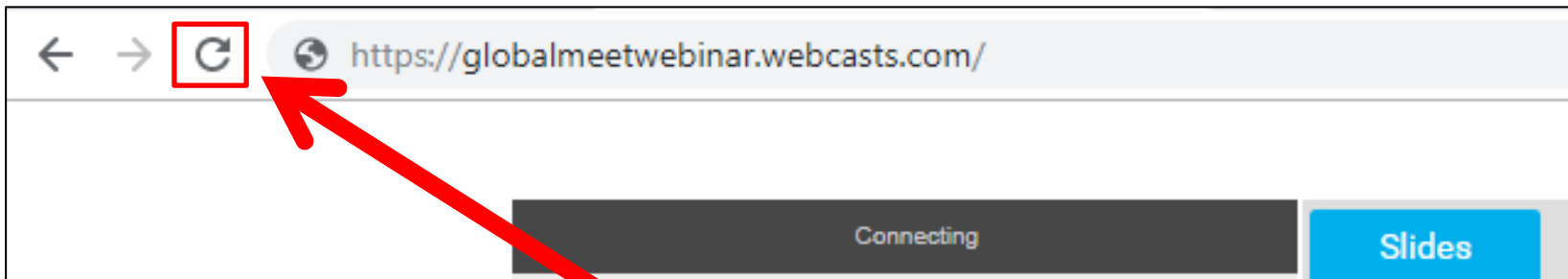
Click Refresh

– or –

Press F5



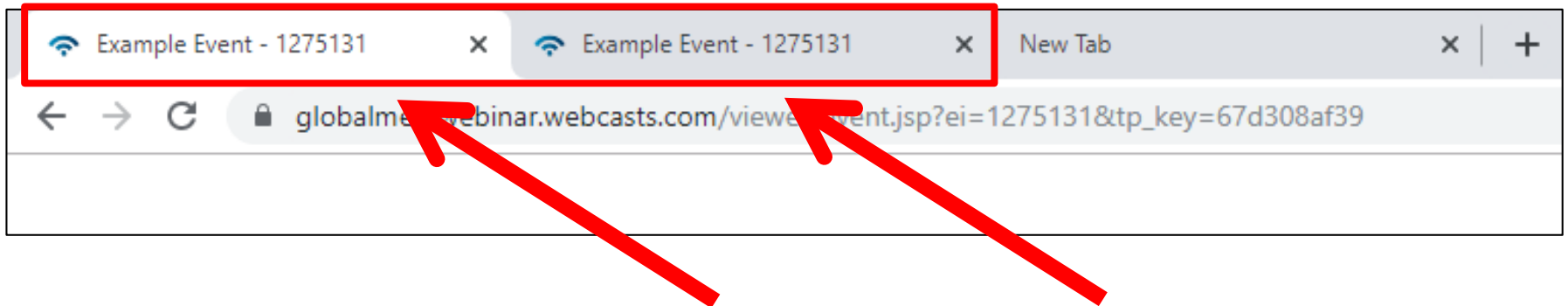
F5 Key  
Top Row of Keyboard



Refresh

# Troubleshooting Echo

- Hear a bad echo on the call?
- Echo is caused by multiple browsers/tabs open to a single event (multiple audio feeds).
- Close all but one browser/tab and the echo will clear.



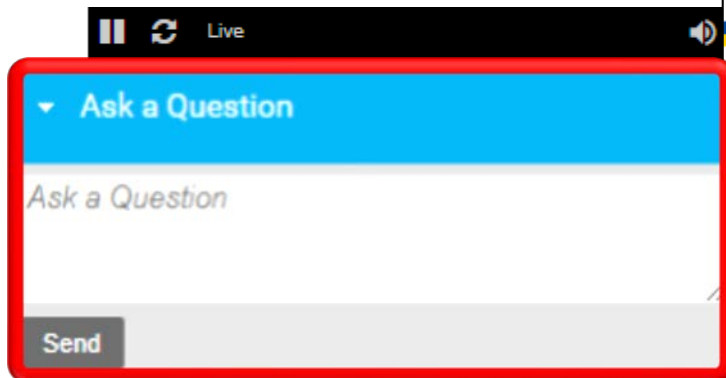
Example of Two Browsers/Tabs Open in Same Event

# Submitting Questions

Type questions in the “Ask a Question” section, located on the left-hand side of your screen.



**Inpatient Value, Incentives, and Quality Reporting (VIQR) Outreach and Education Support Contractor (SC)**



**Today's Presentation**



# **PPS-Exempt Cancer Hospital Quality Reporting (PCHQR) Program: A Year-End Review and Look Ahead**

**Lisa Vinson, BS, BSN, RN**

Program Lead, PCHQR Program

Inpatient Value, Incentives, and Quality Reporting (VIQR)

Outreach and Education Support Contractor

**December 19, 2019**

# Acronyms and Abbreviations

<b>ACS</b>	American College of Surgeons	<b>ICD-10-CM</b>	International Classification of Diseases, 10th revision, Clinical Modification
<b>CAUTI</b>	Catheter-associated Urinary Tract Infection	<b>ICU</b>	intensive care unit
<b>CDC</b>	Centers for Disease Control and Prevention	<b>IPPS</b>	Inpatient Prospective Payment System
<b>CDI</b>	<i>Clostridium difficile</i> Infection	<b>LTCH</b>	long-term care hospital
<b>CE</b>	continuing education	<b>MRSA</b>	Methicillin-resistant <i>Staphylococcus aureus</i>
<b>CLABSI</b>	Central Line-associated Bloodstream Infection	<b>NHSN</b>	National Healthcare Safety Network
<b>CMS</b>	Centers for Medicare & Medicaid Services	<b>NQF</b>	National Quality Forum
<b>CPT</b>	Current Procedural Terminology	<b>OCM</b>	Oncology Care Measures
<b>CY</b>	calendar year	<b>OP</b>	outpatient
<b>EBRT</b>	External Beam Radiotherapy	<b>PCH</b>	PPS-Exempt Cancer Hospital
<b>ED</b>	emergency department	<b>PCHQR</b>	PPS-Exempt Cancer Hospital Quality Reporting
<b>EOL</b>	End of Life	<b>PPS</b>	prospective payment system
<b>FSR</b>	Facility-Specific Report	<b>Q</b>	quarter
<b>FY</b>	fiscal year	<b>SSI</b>	Surgical Site Infection
<b>HAI</b>	healthcare-associated infection	<b>VIQR</b>	Value, Incentives, and Quality Reporting
<b>HCAHPS</b>	Hospital Consumer Assessment of Healthcare Providers and Systems	<b>WBDCT</b>	Web-Based Data Collection Tool
<b>HCP</b>	healthcare personnel		

# Purpose

This presentation will provide a recap of this year's PCHQR Program key events and updates and provide insight into upcoming key events and changes for calendar year (CY) 2020.

# Objectives

Upon completion, participants will be able to recall this year's significant program events and changes and summarize upcoming events and changes.



PPS-Exempt Cancer Hospital Quality Reporting (PCHQR) Program:  
A Year-End Review and Look Ahead

---

**CY 2019 Recap**

# From CMS' Perspective

- Meaningful Measures Initiative
  - 19 Meaningful Measures Areas
  - 6 National Quality Priorities
  - CMS.gov > [Meaningful Measures Framework](#)
- Patients Over Paperwork Initiative
  - CMS.gov > [Patients Over Paperwork](#)
- Future considerations
  - Patient-Reported Outcomes
  - CMS Cancer Program Partnerships
  - CMS Affinity Groups

# Publication of the FY 2020 IPPS/LTCH PPS Final Rule

The Fiscal Year (FY) 2020 Inpatient Prospective Payment System (IPPS)/Long-Term Care Hospital Prospective Payment System (LTCH PPS) Final Rule:

- Refined Hospital Consumer Assessment of Healthcare Providers and Systems (HCAHPS) Survey and removed pain management questions.
- Removed External Beam Radiotherapy (EBRT) for Bone Metastases (PCH-25).
- Added new quality measure Surgical Treatment Complications for Localized Prostate Cancer (PCH-37).
- Specified public reporting requirements for the healthcare-associated infection (HAI) measures (SSI [PCH-6 and PCH-7], CDI [PCH-26], MRSA [PCH-27]) and Admissions and Emergency Department Visits for Patients Receiving Outpatient Chemotherapy (OP Chemo) (PCH-30 and PCH-31).
- Specified confidential national reporting for the End of Life (EOL) (PCH-32, PCH-33, PCH-34, and PCH-35) and 30-Day Unplanned Readmissions for Cancer Patients (PCH-36) measures.

# Removal of HCAHPS Pain Management Questions

- Removal of current pain management questions used in the PCHQR Program begins with October 1, 2019 discharges.
- The October 2020 refresh is the tentative targeted removal timeframe of these questions from *Hospital Compare*.

# Removal of EBRT Measure

- Removal is effective for treatment encounters beginning January 1, 2020.
- Data collection will **not** be required for CY 2020 and forward.

Due Date	Measure	Fiscal Year	Time Period
August 17, 2020	EBRT (and PCH-15)	2021	CY 2019 (01/01/2019-12/31/2019)
August 16, 2021	PCH-15 only	2022	CY 2020 (01/01/2020-12/31/2020)

PCH-15 = Oncology: Medical and Radiation – Plan of Care for Moderate to Severe Pain (NQF #0383)

**\*\*NEW\*\***

# Claims-Based Measure

## Surgical Treatment Complications for Localized Prostate Cancer

Measure Name	PCH #	Measure Type	Data Collection Period for FY 2022
Surgical Treatment Complications for Localized Prostate Cancer	PCH-37	Claims-Based Outcome	July 1, 2019–June 30, 2020

# Public Reporting

Measures	PCH #	NQF #	Public Reporting
HCAHPS Survey	PCH-29	#0166	2016 and subsequent years
Oncology: Plan of Care for Moderate to Severe Pain – Medical Oncology and Radiation Oncology	PCH-15	#0383	2016 and subsequent years
EBRT	N/A	N/A	2017 and subsequent years
SSI-Colon and Abdominal Hysterectomy	PCH-6 and PCH-7	#0753	2019
MRSA	PCH-27	#1716	2019
CDI	PCH-26	#1717	2019
HCP	PCH-28	#0431	2019
OP Chemotherapy	PCH-30 and PCH-31	N/A	2020
CAUTI	PCH-5	#0138	Deferred until CY 2022
CLABSI	PCH-4	#0139	Deferred until CY 2022
Surgical Treatment Complications for Localized Prostate Cancer	PCH-37	N/A	CMS to address public reporting in a future rule

NQF = National Quality Forum

# Form, Manner, and Timing of Data Submission

Confidential national reporting for certain existing PCHQR Program measures

NQF #	PCH #	Measure Name	Data Collection Period
#0210	PCH-32	EOL-Chemo	July 1, 2019–June 30, 2020
#0213	PCH-33	EOL-ICU	July 1, 2019–June 30, 2020
#0215	PCH-34	EOL-Hospice	July 1, 2019–June 30, 2020
#0216	PCH-35	EOL-3DH	July 1, 2019–June 30, 2020
#3188	PCH-36	30-Day Unplanned Readmissions for Cancer Patients	October 1, 2019–September 30, 2020



# Finalized FY 2022 PCHQR Program Measure Set

## Safety and Healthcare-Associated Infection (HAI)

Short Name	PCH #	NQF #	Measure Name
CAUTI	PCH-5	#0138	Catheter-associated Urinary Tract Infection (CAUTI) Outcome Measure
CLABSI	PCH-4	#0139	Central Line-associated Bloodstream Infection (CLABSI) Outcome Measure
HCP	PCH-28	#0431	National Healthcare Safety Network (NHSN) Influenza Vaccination Coverage Among Healthcare Personnel (HCP)
SSI-Colon and Abdominal Hysterectomy	PCH-6 and PCH-7	#0753	American College of Surgeons-Centers for Disease Control and Prevention (ACS-CDC) Harmonized Procedure Specific Surgical Site Infection (SSI) Outcome Measure (currently includes SSIs following Colon Surgery and Abdominal Hysterectomy)
MRSA	PCH-27	#1716	NHSN Facility-wide Inpatient Hospital-onset Methicillin-resistant <i>Staphylococcus aureus</i> (MRSA) Bacteremia Outcome Measure
CDI	PCH-26	#1717	NHSN Facility-wide Inpatient Hospital-onset <i>Clostridium difficile</i> Infection (CDI) Outcome Measure

# Finalized FY 2022 PCHQR Program Measure Set

## Clinical Process/Oncology Care Measures

Short Name	PCH #	NQF #	Measure Name
N/A	PCH-15	#0383	Oncology: Plan of Care for Pain – Medical Oncology and Radiation Oncology
EOL-Chemo	PCH-32	#0210	Proportion of Patients Who Died from Cancer Receiving Chemotherapy in the Last 14 Days of Life
EOL-Hospice	PCH-34	#0215	Proportion of Patients Who Died from Cancer Not Admitted to Hospice

## Intermediate Clinical Outcome Measures

EOL-ICU	PCH-33	#0213	Proportion of Patients Who Died from Cancer Admitted to the Intensive Care Unit (ICU) in the Last 30 Days of Life
EOL-3DH	PCH-35	#0216	Proportion of Patients Who Died from Cancer Admitted to Hospice for Less Than Three Days

# Finalized FY 2022 PCHQR Program Measure Set

## Patient Engagement/Experience of Care

Short Name	PCH #	NQF #	Measure Name
HCAHPS	PCH-29	#0166	Hospital Consumer Assessment of Healthcare Providers and Systems

## Claims-Based Outcome Measures

OP Chemotherapy	PCH-30 and PCH-31	N/A	Admissions and Emergency Department (ED) Visits for Patients Receiving Outpatient Chemotherapy
N/A	PCH-36	#3188	30-Day Unplanned Readmissions for Cancer Patients
N/A	PCH-37	N/A	Surgical Treatment Complications for Localized Prostate Cancer*

\*Measure finalized for adoption for the FY 2022 program year and subsequent years.

# QualityNet Home Page

CMS.gov | QualityNet

Search QualityNet

Quality Programs ▾ Help ▾

[Log into Secure Portal](#) [Register](#)

## Welcome to QualityNet!

Your one-stop shop for CMS Quality Programs.

[Subscribe to Email Updates](#)

[Log into QualityNet Secure Portal](#)

Recent News [View more](#)

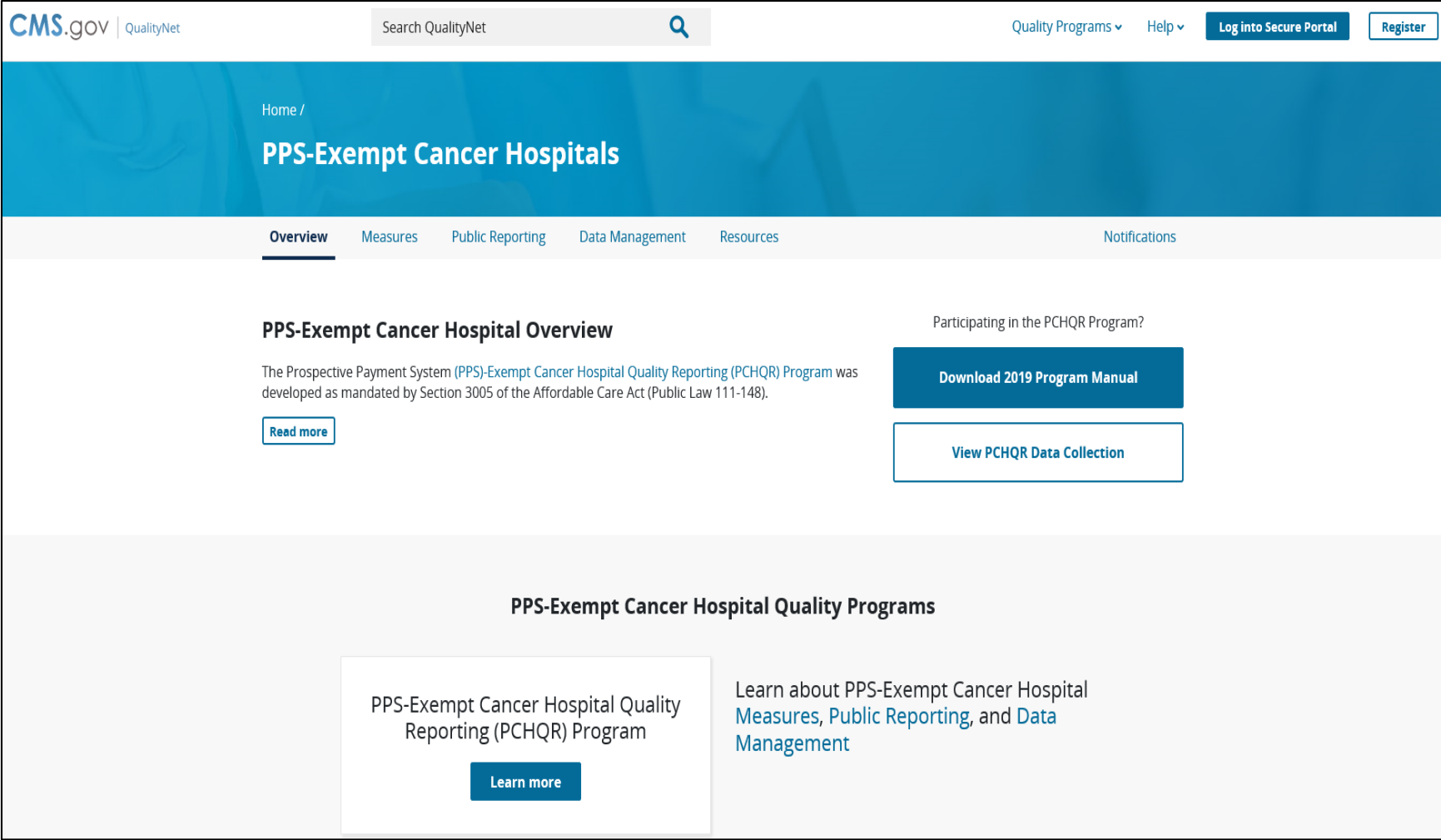
Sep 9, 2019  
Coming Soon! Updated QualityNet Question and Answer Tool

Aug 30, 2019  
New Enterprise Services Managed File Transfer (MFT) on September 3

I am looking for quality information associated with...

- Hospitals - Inpatient
- Hospitals - Outpatient
- Ambulatory Surgical Centers
- PPS-Exempt Cancer Hospitals**
- ESRD Facilities
- Inpatient Psychiatric Facilities

# QualityNet PCHQR Program Landing Page



The screenshot shows the QualityNet PCHQR Program Landing Page. At the top, there is a navigation bar with the CMS.gov logo, a search bar, and links for Quality Programs, Help, Log into Secure Portal, and Register. Below the navigation bar is a blue header with the text 'Home / PPS-Exempt Cancer Hospitals'. A secondary navigation bar contains links for Overview, Measures, Public Reporting, Data Management, Resources, and Notifications. The main content area features a section titled 'PPS-Exempt Cancer Hospital Overview' with a brief description of the program and a 'Read more' button. To the right, there is a section titled 'Participating in the PCHQR Program?' with two buttons: 'Download 2019 Program Manual' and 'View PCHQR Data Collection'. Below this is another section titled 'PPS-Exempt Cancer Hospital Quality Programs' with a box containing the text 'PPS-Exempt Cancer Hospital Quality Reporting (PCHQR) Program' and a 'Learn more' button, followed by a paragraph of text: 'Learn about PPS-Exempt Cancer Hospital Measures, Public Reporting, and Data Management'.

# QualityNet PCHQR Program Data Collection Page

Home / PPS-Exempt Cancer Hospitals /

## PPS-Exempt Cancer Hospital Data Management

[Overview](#)

[Measures](#)

[Public Reporting](#)

[Data Management](#)

[Resources](#)

[Notifications](#)

### PPS-Exempt Cancer Hospital Data Management

Learn more about data collection, data submission, and data validation.

#### Data Collection

##### PPS-Exempt Cancer Hospital Data Collection

The PCHQR program is comprised of multiple types of measures that are collected using a variety of tested data collection instruments.

[Learn more](#)

#### Data Submission

##### PPS-Exempt Cancer Hospital Data Submission

PPS-Exempt Cancer Hospitals (PCHs) participating in the PCHQR Program must submit required data via each measure's acceptable methods of transmission.

[Learn more](#)

# QualityNet Data Collection Page

- PCH-15 tools updated:
  - Measure Information Form
  - Clean algorithm
  - Population and Sampling algorithm
  - Paper abstraction tool

**Table 2: Clinical Process/Oncology Care Measures (OCM)**

NQF #	PCH #	Measure Name	Specifications Manual & Measure Information Forms	Data Collection Tool	Acceptable Method of Transmission
0383	PCH-15	Oncology: Plan of care for moderate to severe pain	<ul style="list-style-type: none"> <li>• 2019 Plan of care for moderate to severe pain measure information form</li> <li>• 2019 Plan of care for moderate to severe pain algorithm (clean version)</li> <li>• 2019 Plan of care for moderate to severe pain (population and sampling version)</li> </ul>	<ul style="list-style-type: none"> <li>• 2019 Plan of care for moderate to severe pain paper abstraction tool</li> </ul>	Web-based data entry via QualityNet Secure Portal

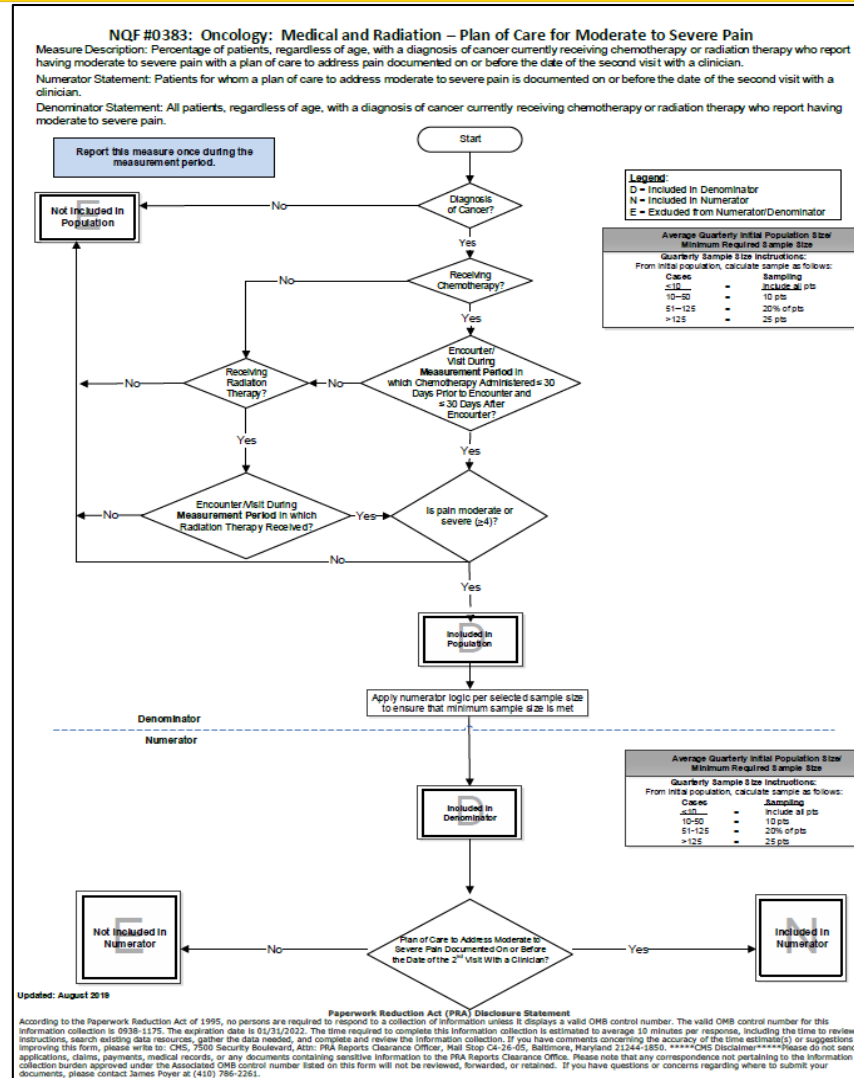
# Updated: Plan of Care for Moderate to Severe Pain (PCH-15/NQF #0383)

- Updated measure title, description, and instructions
- Added denominator coding – CPT Service Codes
  - 99201, 99203, 99203, 99204, 99205, 99212, 99213, 99214, 99215 WITHOUT Telehealth modifier GQ, GT, 95, POS 02
- Added denominator coding – CPT Procedure Codes
  - 51720, 96401, 96402, 96405, 96406, 96409, 96411, 96413, 96415, 96416, 96417, 96420, 96422, 96423, 96425, 96440, 96446, 96450, 96521, 96522, 96523, 96542, 96549 and Denominator Criteria (M1000)
- Added denominator coding, CPT
  - 77427, 77431, 77432, 77435
- Denominator coding (Eligible cases), ICD-10-CM
  - Added C43.111, C43.112, C43.121, C43.122; C44.1021, C44.1022, C44.1091, C44.1092, C44.1121, C44.1122, C44.1191, C44.1192, C44.1221, C44.1222, C44.1291, C44.1292, C44.1921, C44.1922, C44.1991, C44.1992, C4A.111, C4A.112, C4A.121, C4A.122
  - Deleted C43.11, C43.12, C44.102, C44.109, C44.112, C44.119, C44.122, C44.129, C44.192, C4A.11, C4A.12
- Added Numerator Options
  - Performance met (M1001) and Performance not met (M1002)

ICD-10-CM = International Classification of Diseases, 10th revision, Clinical Modification



# Updated: Plan of Care for Moderate to Severe Pain (PCH-15/NQF #0383)



# Admissions and ED Visits for Patients Receiving Outpatient Chemotherapy

- Facility-Specific Reports (FSRs) were distributed April 18, 2019.
- Information available on [QualityNet](#):
  - PPS-Exempt Cancer Hospitals > Measures > Chemotherapy Measure > Learn more
    - [Overview](#)
    - [Methodology](#)
    - [Reports](#) (Mock FSR, FSR User Guide)
    - [Resources](#) (Fact sheet, Frequently Asked Questions)

# Updated: PCHQR Program Web Pages

## *QualityNet:*

- [Overview](#)
- [PCHQR Measures](#)
- [Participation](#)
- [Resources](#)

## *Quality Reporting Center:*

- [Overview](#)
- [Resources and Tools](#)

# Updated: PCHQR Program Resources

- 2019 Program Manual (Fall update)
- Measure Submission Deadlines by Due Date
- Web-Based Data Collection Tool (WBDCT) Guidelines by Due Date
- Relationship Matrix
- Measure Information Forms and algorithms

PPS-Exempt Cancer Hospital Quality Reporting (PCHQR) Program:  
A Year-End Review and Look Ahead

---

**Looking Ahead to CY 2020**

# *What's Next?*

## **PCHQR Program Measures**

- PCH-15/NQF #0383 will continue to be reported annually in August.
- PCH-25 measure data will be reported for the last time in August 2020 (data collected in CY 2019).
- Resources and tools will be updated accordingly on both *QualityNet* and *Quality Reporting Center*.

# *What's Next?*

## Public Reporting

### OP Chemotherapy

- Publicly reported in April 2020
  - Data collection period: July 1, 2017–June 30, 2018
- Publicly reported in July 2020 (then annually starting July 2021)
  - Data collection period: July 1, 2018–June 30, 2019
  - FSRs distributed in Spring 2020

# *What's Next?*

## **Public Reporting**

### HAI, HCAHPS and OCM

- HAI measures will continue to be publicly reported:
  - SSI, MRSA, and CDI – quarterly (January, April, July, and October)
  - HCP – annually (October)
- HCAHPS Survey data will continue to be publicly reported quarterly.
- Four Oncology Care Measure (OCM) (PCH-14, PCH-16, PCH-17, and PCH-18) data last public display will be January 2020.



# Schedule for Public Reporting

<i>Hospital Compare Release</i>	<b>Measures</b>	<b>Quarters Displayed</b>
January 2020	PCH-14, PCH-15, PCH-16, PCH-17, PCH-18 and PCH-25	Q1, Q2, Q3 and Q4 2018
	PCH-6, PCH-7, PCH-26, PCH-27	Q2, Q3, Q4 2018 and Q1 2019
	PCH-29	Q2, Q3, Q4 2018 and Q1 2019
April 2020	PCH-6, PCH-7, PCH-26, PCH-27	Q3, Q4 2018 and Q1, Q2 2019
	PCH-29	Q3, Q4 2018 and Q1, Q2 2019
	PCH-30 and PCH-31	Q3, Q4 2017 and Q1, Q2 2018

PPS-Exempt Cancer Hospital Quality Reporting (PCHQR) Program:  
A Year-End Review and Look Ahead

---

**Key Dates and Reminders**

# Upcoming Events and Deadlines

- **Event – Save the Date (Tentative)**
  - April/May 2020
    - FY 2021 IPPS/LTCH PPS Proposed Rule
- **Data Submission Deadline**
  - Thursday, January 2, 2020
    - 3Q 2019 HCAHPS Survey data
  - Tuesday, February 18, 2020
    - 3Q 2019 HAI data
      - ✓ CAUTI, CLABSI, CDI, MRSA, and SSI-colon and abdominal hysterectomy

# *Hospital Compare*

- **January 2020 Refresh**
  - 2Q 2018 through 1Q 2019 HCAHPS Survey data
  - 2Q 2018 through 1Q 2019 HAI measure data
    - CDI, MRSA, SSI-Colon and Abdominal Hysterectomy
  - 1Q 2018 through 4Q 2018 Oncology Care Measures
  - 1Q 2018 through 4Q 2018 EBRT measure data
- **April 2020 Refresh**
  - 3Q 2018 through 2Q 2019 HCAHPS Survey data
  - 3Q 2018 through 2Q 2019 HAI measure data
    - CDI, MRSA, SSI-Colon and Abdominal Hysterectomy
  - 3Q 2017 through 2Q 2018 OP Chemotherapy measure data

# Accessing the *QualityNet* Questions and Answers Tool

The screenshot shows the CMS.gov QualityNet website interface. At the top left is the CMS.gov logo and 'QualityNet'. A search bar contains 'Search QualityNet' and a magnifying glass icon. On the right, there are links for 'Quality Programs', 'Help', 'Log into Secure Portal', and 'Register'. A dropdown menu is open, displaying three main categories: 'Getting Started', 'Known Issues & Maintenance', and 'Question & Answer Tools'. Under 'Question & Answer Tools', the link 'PPS-Exempt Cancer Hospitals' is highlighted with a red box. A 'Close' button is visible in the top right of the dropdown menu.

**Getting Started**  
Registration  
Sign In Instructions  
Security Statement & Policy  
Password Rules

**Training & Guides**  
QualityNet Training  
QualityNet Secure Portal  
Secure File Transfer  
QualityNet Events Center

**Known Issues & Maintenance**  
Known Issues  
System Maintenance

**QualityNet Support**  
QualityNet Support

**Question & Answer Tools**  
Hospitals - Inpatient  
Hospitals - Outpatient  
PPS-Exempt Cancer Hospitals  
Ambulatory Surgical Centers  
ESRD Facilities  
Inpatient Psychiatric Facilities

# Ask a Question

CMS.gov | QualityNet

Quality Q&A Tool   Ask a Question   Browse Program Articles  

How to Use this Tool

## Quality Question and Answer Tool

Your one-stop shop for CMS Quality Answers

Search for the answer to your question

**Browse**  
View existing articles

**Ask a Question**  
Submit a Question to CMS

Site Feedback

For the best experience, please use one of the following browsers: Chrome, Firefox, Safari, Microsoft Edge. Mobile devices are not currently supported.

# Submit a Question

QualityNet Question and Answer Site

Submit a Question to Our Support Team. \* Indicates required field

**WARNING:** Individually identifiable health information in this system is subject to the Health Information Portability and Accountability Act of 1996 and the Privacy Act of 1974. Submission of questions to the QIO and Hospital Q&A System that contains Protected Health Information (PHI) is a violation of these Acts. **Questions containing PHI will be deleted from the system and not processed.** For detailed information regarding transmitting or receiving healthcare information or data read the [QualityNet System Security Policy, PDF](#)

Tell us about yourself

First Name *	Last Name *	
<input type="text" value="enter first name (limit 75 chars)"/>	<input type="text" value="enter last name (limit 75 chars)"/>	
Email Address *	Confirm Email Address *	Phone Number
<input type="text" value="enter email address; format joe@domain.com"/>	<input type="text" value="enter email address again to confirm"/>	<input type="text" value="format xxx-xxx-xxxx (ext.)"/>


What is your question?

Program \*  |

Topic \*  |

Subject \*  |

Question (4000 Characters Max) \*  |

I'm not a robot 

PPS-Exempt Cancer Hospital Quality Reporting (PCHQR) Program:  
A Year-End Review and Look Ahead

## **Continuing Education**



# Continuing Education (CE) Approval

This program has been approved for [CE credit](#) for the following boards:

- **National credit**
  - Board of Registered Nursing (Provider #16578)
- **Florida-only credit**
  - Board of Clinical Social Work, Marriage & Family Therapy and Mental Health Counseling
  - Board of Registered Nursing
  - Board of Nursing Home Administrators
  - Board of Dietetics and Nutrition Practice Council
  - Board of Pharmacy

**Note:** To verify CE approval for any other state, license, or certification, please check with your licensing or certification board.

PPS-Exempt Cancer Hospital Quality Reporting (PCHQR) Program:  
A Year-End Review and Look Ahead

---

**Closing Remarks**

# Disclaimer

This presentation was current at the time of publication and/or upload onto the *Quality Reporting Center* and *QualityNet* websites. Medicare policy changes frequently. Any links to Medicare online source documents are for reference use only. In the case that Medicare policy, requirements, or guidance related to this presentation change following the date of posting, this presentation will not necessarily reflect those changes; given that it will remain as an archived copy, it will not be updated.

This presentation was prepared as a service to the public and is not intended to grant rights or impose obligations. Any references or links to statutes, regulations, and/or other policy materials included in the presentation are provided as summary information. No material contained therein is intended to take the place of either written laws or regulations. In the event of any conflict between the information provided by the presentation and any information included in any Medicare rules and/or regulations, the rules and regulations shall govern. The specific statutes, regulations, and other interpretive materials should be reviewed independently for a full and accurate statement of their contents.