

# Hospital Inpatient Quality Reporting (IQR) Program



## Quick Support Reference Card

### Inpatient Question and Answer Tool

Need an answer right now? No time to pick up the phone or email for support? The Inpatient Question and Answer Tool is here for you. With only a few clicks, immediate answers to the most commonly asked questions are at your fingertips. Visit [cmsqualitysupport.servicenow.com/qnet\\_qa](https://cmsqualitysupport.servicenow.com/qnet_qa) to browse existing questions and responses. Unable to find a response for your question? Visit [cmsqualitysupport.servicenow.com/qnet\\_qa?id=ask\\_a\\_question](https://cmsqualitysupport.servicenow.com/qnet_qa?id=ask_a_question) to ask a question.



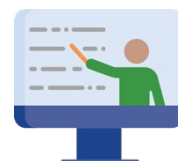
### Phone Support

The Hospital IQR Program team is waiting on the other end of the phone line and ready to assist you. Our experienced staff is available to help you from 8 a.m. to 8 p.m. Eastern Time, Monday through Friday. Give us a call toll free at (844) 472-4477 or (866) 800-8765. Your support center is standing by!



### Webinars

Hospital IQR Program web conferences offer helpful information on key subjects from experts in CMS hospital quality reporting programs and initiatives, like the Hospital IQR Program and CMS value-based purchasing programs! Interact with CMS and program leads, ask questions, and receive data relevant to your job. Click on the [Events Calendar](#) link to register to attend an event! Also, you can watch past webinars under [Archived Events](#).



### Forms and Secure Transmissions

Do you need to send a form or a secure file related to the Hospital IQR Program? We offer several ways to do this. You can submit non-secure forms by email at [grformssubmission@hsa.gov](mailto:grformssubmission@hsa.gov). You can send secure forms/documents through the [Managed File Transfer](#) application or via this secure fax number: (877) 789-4443



### Website

For up-to-date information, events, and reporting deadlines about the Hospital IQR Program, visit the Hospital IQR Program Support Center website at [www.qualityreportingcenter.com](http://www.qualityreportingcenter.com).

For your convenience, you can also find links to hospital outpatient and ambulatory surgical center resources. To find what you're looking for, use the search tool in the top right corner of the site.

