



Navigating *QualityNet*: Where to Find What You Need When you Need it

Lynn Jones, BS, MS
PCHQR Team Lead, HSAG
Henrietta Hight, BA, BSN, RN, CCM, CDMS, CPHQ
Project Coordinator, HSAG

February 26, 2015
1 p.m. ET

Continuing Education Approval

- This program has been approved for 1.0 continuing education (CE) unit given by CE Provider #50-747 for the following professional boards:
 - Florida Board of Nursing
 - Florida Board of Clinical Social Work, Marriage and Family Therapy and Mental Health Counseling
 - Florida Board of Nursing Home Administrators
 - Florida Council of Dietetics
 - Florida Board of Pharmacy
- Professionals licensed in other states will receive a Certificate of Completion to submit to their licensing Boards.

2/26/2015

2

CE Credit Process

- Complete the ReadyTalk survey you will receive by email within the next 48 hours or the one that will pop up after the webinar.
- The survey will ask you to log in or register to access your personal account in the Learning Management Center.
 - A one-time registration process is required.

2/26/2015

3

Objectives

Participants will be able to:

- Navigate the *QualityNet* PCHQR section as part of improved patient care
- Demonstrate knowledge of resources, including the Questions & Answers tool, data collection tools, and submission documents
- Discuss steps for using the website effectively and efficiently

2/26/2015

4

QualityNet Overview

- Established by the Centers for Medicare & Medicaid Services (CMS)
- Provides healthcare quality improvement news, resources, and data reporting tools and applications
- Used by healthcare providers and others in support of selected quality reporting programs

www.qualitynet.org

2/26/2015

5

QualityNet Overview

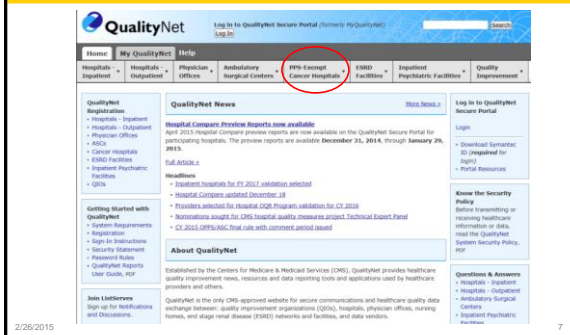
- *QualityNet* provides information and resources for multiple CMS quality reporting programs, including:
 - Hospital Inpatient Quality Reporting (Hospital IQR)
 - Hospital Outpatient Quality Reporting (Hospital OQR)
 - Ambulatory Surgical Center Quality Reporting (ASCQR)
 - Inpatient Psychiatric Facility Quality Reporting (IPF QR)
 - **PPS-Exempt Cancer Hospital Quality Reporting (PCHQR)**
 - Physician Quality Reporting System (PQRS)
 - End Stage Renal Disease Reporting (ESRD)

www.qualitynet.org

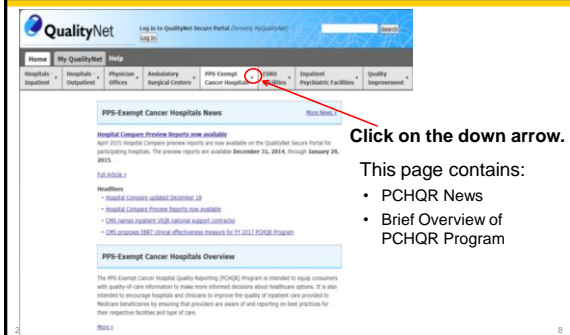
2/26/2015

6

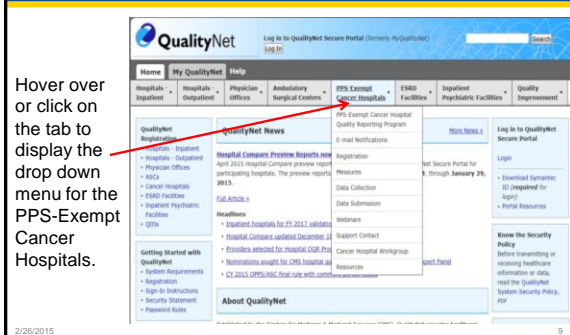
QualityNet Home Page



PPS-Exempt Cancer Hospitals Home Page

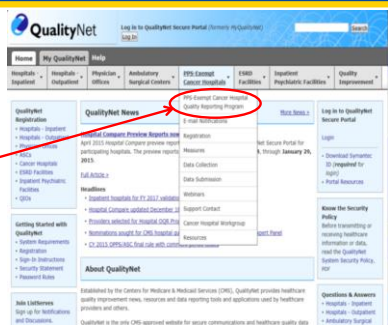


PPS-Exempt Cancer Hospitals Menu



PPS-Exempt Cancer Hospital Quality Reporting Tab

Click on the PPS-Exempt Cancer Hospital Quality Reporting Program.



2/26/2015

PPS-Exempt Cancer Hospitals Quality Reporting Program Page

The PCHQR Program page provides:

- List of hospitals in PCHQR program
- Links to the FY Final Rules with PCHQR sections
- Link to the Federal Register website

PPS-Exempt Cancer Hospital Quality Reporting (I Overview)

The Prospective Payment System (PPS)-Exempt Cancer Hospital QRS was developed as mandated by Section 3005 of the Affordable Care Act.

The PCHQR program is intended to assist consumers with quality of care information decisions about healthcare options. It is also intended to assist in improving the quality of inpatient care provided to Medicare beneficiaries aware of and reporting on best practices for their respective facility.

To meet the PCHQR program requirements, PPS-Exempt Cancer Hospitals submit all quality measures to the PCHQR program.

PCHQR Program Eligibility
Eligible hospitals are described in section 1886(a)(1)(D)(v) and refer to hospitals or PCN. These hospitals are excluded from payment under the PPS (PPS). CMS has designated 13 hospitals as PPS-Exempt (Excluded Cancer Hospitals).

Final Rules for Hospital Inpatient Prospective Payment System
Information regarding the PPS-Exempt Cancer Hospital Quality Reporting Program is found in the following final rule publications:

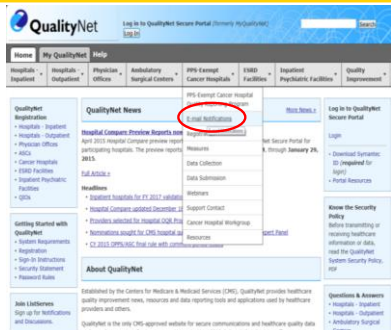
- In the FY 2013 Inpatient Prospective Payment System and Long-Term Care PPS (LTC-PPS) Final Rule (75 FR 53534 through 5 and 6, Medicare Services (CMS) finalized three quality measures (one for and three cancer-specific treatment measures) for the FY 2014 program year.
- In the FY 2014 Inpatient Prospective Payment System and Long-Term Care PPS (LTC-PPS) Final Rule (76 FR 53534 through 5 and 6, CMS finalized three quality measures (one for and three cancer-specific treatment measures) for the FY 2015 program year. In addition, CMS finalized 12 new quality measures (one for and 11 cancer-specific treatment measures) for the FY 2016 program and will remove or replace any of the previously finalized measures from and FY 2016.
- In the FY 2016 Inpatient Prospective Payment System and Long-Term Care PPS (LTC-PPS) Final Rule (76 FR 53534 through 5 and 6, CMS finalized three effectiveness measures (ERRT) for the FY 2017 program and will remove or replace any of the previously finalized measures from and FY 2017 program and subsequent years.

Refer to the [Federal Register](#) for other official Medicare Final Rule publications.

2/26/2015

11

PPS-Exempt Cancer Hospitals E-mail Notifications Tab



2/26/2015

12

PPS-Exempt Cancer Hospitals E-mail Notifications Page

The following e-mail notifications regarding the Prospective Payment System (PPS) Exempt Cancer Hospital Quality Reporting Program (PCHQR) have been sent to those registered to receive notifications:

Reference Number	Date	Subject
2014-12-01	12/01/14	Review Reminder: External Data Submission (EDS) for New Hospitals - A New Quality Measure Reporting with PCHQR Program Year 2017
2014-12-01	12/01/14	Dear the Date: November 14, 2014 External Data Submission (EDS) for New Hospitals - A New Quality Measure Reporting with PCHQR Program Year 2017
2014-12-01	12/01/14	Resources Available for Hospitals Participating in QDR Program
2014-12-01	12/01/14	Dear the Date: PPS-Exempt Cancer Hospital Quality Reporting Program (PCHQR) for the 2014-2015 Reporting Period
2014-12-01	12/01/14	Non-Hospital Quality Reporting Program Known Issues
2014-12-01	12/01/14	December 2014 Hospital Compliance Review Report New Available
2014-12-01	12/01/14	Dear the Date: PPS-Exempt Cancer Hospital Quality Reporting Program (PCHQR) for the 2014-2015 Reporting Period
2014-12-01	12/01/14	October 2014 Hospital Compliance Assessment
2014-12-01	12/01/14	2015 Hospital PPS-Exempt Cancer Hospital Quality Reporting Program (PCHQR) for the 2014-2015 Reporting Period
2014-12-01	12/01/14	August 2014 Data Accuracy and Completeness Acknowledgment

The E-mail Notifications page provides:

- Access to CMS-approved PCH ListServe notifications distributed since August 2014
- Listserv registration

PPS-Exempt Cancer Hospitals Registration Tab

The PPS-Exempt Cancer Hospital Quality Reporting Program (PCHQR) is a voluntary program for hospitals to report quality data. The registration process involves creating a user account and submitting data to the PCHQR system. The 'Registration' tab provides information on how to register and submit data.

PPS-Exempt Cancer Hospitals Registration Page

The PPS-Exempt Cancer Hospital Quality Reporting Program (PCHQR) is a voluntary program for hospitals to report quality data. The registration process involves creating a user account and submitting data to the PCHQR system. The 'Registration' page provides information on how to register and submit data.

The PCHQR Registration Page provides:

- Information about registering on QualityNet as a Security Administrator (SA) or a Basic User

Each hospital should have at least two team members registered as SAs.

Important Reminders for Hospitals Regarding SAs

Each hospital should have at least two *QualityNet* SAs.

- This is important for backup in the event of illness, vacations, or position status changes during a data submission period.

SAs must log into *QualityNet* at least every 60 days to keep their account active.

- If an SA (or other *QualityNet* user) has not logged in for more than 60 days, their account may be deactivated.
 - This could pose a problem during a data submission period.

2/26/2015

16

PPS-Exempt Cancer Hospitals Measures Tab

The screenshot shows the QualityNet homepage. The 'Measures' link in the top navigation bar is circled in red. The left sidebar contains links for 'QualityNet Registration', 'Hospital Companies', 'Data Collection', 'Data Submission', and 'About QualityNet'. The main content area displays 'QualityNet News' and 'Hospital Companies'.

2/26/2015

17

PPS-Exempt Cancer Hospitals Measures Page

PPS-Exempt Cancer Hospital Quality Reporting (PCHQR) Program

Hospitals participating in the PPS-Exempt Cancer Hospital Quality Reporting Program are required to report the following measures endorsed by the National Quality Forum (NQF) for the specified program year reporting requirements as outlined in the current Final Rules.

Refer to the [Data Collection](#) page for measure specifications. Refer to the [Data Submission](#) page for an accessible, print information displayed below.

Finalized measures for inclusion in the PCHQR Program (by me program year)

Table 1: Safety and Healthcare-Associated Infection (HAI) Measures
Y = Applicable for stated program year; N/A = Not Applicable for stated program year

NQF #	Measure Name	FY 2014	FY 2015	FY 2016
0139	NHSN Central Line-Associated Bloodstream Infection (CLABSI) Outcome Measure	Y	Y	Y
0138	NHSN Catheter-Associated Urinary Tract Infection (CAUTI) Outcome Measure	Y	Y	Y
0753	Harmonized Procedure Specific Surgical Site Infection (SSSI) Outcome Measure	N/A	Y	Y

Table 2: Clinical Process/Cancer-Specific Treatment Measures
Y = Applicable for stated program year; N/A = Not Applicable for stated program year

The PCHQR Measures page provides:

- Table of all PCHQR measures by Program Year
- Link to Final Rules
- Links to other pages
 - Data Collection
 - Data Submission
 - Measure Crosswalk

The Measures page makes it easy to locate measure-specific information quickly and easily.

2/26/2015

18

PPS-Exempt Cancer Hospitals Data Collection Tab

Help

Physician Offices Ambulatory Surgical Centers PPS-Exempt Cancer Hospitals ESRD Facilities Inpatient Psychiatric Facilities

QualityNet News

[Hospital Compare Preview Reports now up!](#) 2015 Hospital Compare preview report participating hospitals. The preview reports 015.

[Full Article »](#)

Headlines

- Inpatient hospitals for FY 2017 validation
- Hospital Compare updated December 14
- Providers selected for Hospital OQR Pilot
- Nominations sought for CMS hospital app
- CY 2015 OPFS/ASC final rule with comment

About QualityNet

Established by the Centers for Medicare & Medicaid Services (CMS), QualityNet provides healthcare quality improvement news, resources and data reporting tools and applications used by healthcare

2/26/2015 19

PPS-Exempt Cancer Hospitals Data Collection Tab

Data Collection

PPS-Exempt Cancer Hospital Quality Reporting Program

The PCHQR program comprises multiple types of measures endorsed by the National Center for Healthcare Quality Improvement (NCHQI) that are collected by participating PPS-Exempt Cancer Hospitals collection instruments. These measures have different sampling requirements and data submission deadlines.

A facility can request an extension or waiver of various Quality Reports to extraordinary circumstances beyond the control of the facility. To re complete and submit the Extraordinary Circumstances Extension or Waiver or extraordinary circumstance.

Table 1: Safety and Healthcare-Associated Infection (SHA) Measures

NQF #	Measure Name	Specifications Manual & Measure Information Forms	Data Collection Tool
0139	NHSN Central line-associated bloodstream infection (CLABSI) outcome	CLABSI measure specifications (ZIP - 12 MB)	CLABSI data collection form
0138	NHSN Catheter-associated urinary tract infection (CAUTI) outcome	CAUTI measure specifications (ZIP - 18 MB)	CAUTI data collection form

The PCHQR Data Collection page provides:

- Table with links to individual measure information, data collection forms, and data transmission information
- Link to data submission deadlines table
- Link to Extraordinary Circumstances Extension or Waiver form

2/26/2015 20

PPS-Exempt Cancer Hospitals Data Submission Tab

QualityNet

Log in to QualityNet Secure Portal (formerly MyQualityNet)

Home My QualityNet Help

Hospitals - Inpatient Hospitals - Outpatient Physician Offices Ambulatory Surgical Centers PPS-Exempt Cancer Hospitals ESRD Facilities Inpatient Psychiatric Facilities Quality Improvement

QualityNet News

[Hospital Compare Preview Reports now up!](#) April 2015 Hospital Compare preview report participating hospitals. The preview reports 015.

[Full Article »](#)

Headlines

- Inpatient hospitals for FY 2017 validation
- Hospital Compare updated December 14
- Providers selected for Hospital OQR Pilot
- Nominations sought for CMS hospital app
- CY 2015 OPFS/ASC final rule with comment

About QualityNet

Established by the Centers for Medicare & Medicaid Services (CMS), QualityNet provides healthcare quality improvement news, resources and data reporting tools and applications used by healthcare

2/26/2015 21

PPS-Exempt Cancer Hospitals Data Submission Page

PPS-Exempt Cancer Hospitals Reporting Program

PPS-Exempt Cancer Hospitals participating in the PCHQR Program must submit the acceptable methods of transmission no later than 11:59 p.m. Pacific Time on deadline date as established by the Centers for Medicare & Medicaid Services (CMS) submitted according to the established deadlines of CMS qualify for inclusion in the

The PCHQR Program Submission Deadlines by Due Date document serves as a us provides the specific data submission deadlines for the required PCHQR Program i collection period due date. The reference periods noted for CLABSI, CAUTI, and S dates; the reference periods for the other measures denote discharge dates. For i sites and National Quality Forum designations, refer to the PPS-Exempt Cancer H page on QualityNet.

Measure Exception Form

Some hospitals may not have locations that meet the National Healthcare Safety criteria for CLABSI or CAUTI reporting, and some hospitals may perform so few pi surveillance under the SSI measure that the data may not be meaningful for Hsq sufficiently reliable to be utilized for quality reporting purposes in a program year.

Reporting will not be required for these measures if the PPS-Exempt Cancer Hosp than a combined total of nine specified colon and abdominal hysterectomy proced year prior to the reporting year. To indicate a measure is not being reported, a Bb Form should be completed and submitted prior to the First Quarter data submissi applicable program year.

Extraordinary Circumstances Extension/Exemptions Request Form

In the event that a PPS-Exempt Cancer Hospital (PCH) is unable to submit any re (e.g., medical records, data) due to an extraordinary circumstance, such as a nat PCH may request an extension or waiver. The PCH will need to complete the Extra Circumstances Extension/Exemptions Request Form and submit the form with an information and supporting documentation within 30 calendar days of the date of circumstance.

The PCHQR Data Submission page provides:

- Link to Submission Deadlines by Due Date grid
- Link to the Measures page
- Link to the Measure Exception Form
- Link to the Extraordinary Circumstances Extension or Waiver form
- Contact information for form submission

2/24/2015

22

PPS-Exempt Cancer Hospitals Webinars Tab

2/26/2015

23

PPS-Exempt Cancer Hospitals Webinars Page

PPS-Exempt Cancer Hospitals Reporting Program

Informational resources regarding the PPS-Exempt Cancer Hospital Quality Reporting (PCHQR) Program are made available as part of the scheduled webinars/calls for participating hospitals.

* Recorded webinars are available on demand from the links below. To view, enter your email address in the Event Registration screen (or register as a new user).

Date	Topic/ID	Resources
October 28	PPS-2013 PCHQR Final Rule for PPS-Exempt Cancer Hospitals	<ul style="list-style-type: none"> • Slides: Available October 28 • Recorded Webinar (view on demand) • Registration: Call 800-455-4545 • Download and Access: Call 800-455-4545 • Webcast: 11:00 AM - 12:00 PM (ET)
August 28	Report Card on the Implementation of Healthcare Provider and Systems Survey (HAPSS) - PCHQR Version	<ul style="list-style-type: none"> • Recorded Webinar (view on demand) • Registration: Call 800-455-4545 • Download and Access: Call 800-455-4545 • Webcast: 11:00 AM - 12:00 PM (ET)
August 25	2013 Hospital Inpatient Prospective Payment System (IPPS) Final Rule	<ul style="list-style-type: none"> • Recorded Webinar (view on demand) • Registration: Call 800-455-4545 • Download and Access: Call 800-455-4545 • Webcast: 11:00 AM - 12:00 PM (ET)

The PCHQR Webinars/Calls page provides:

- Historical access to educational event information
 - Presentation slides
 - Audio recordings
 - Presentation transcripts
 - Q&A transcripts

2/26/2015

24

PPS-Exempt Cancer Hospitals Select Contact Tab

Help				
Physician Offices	Ambulatory Surgical Centers	PPS-Exempt Cancer Hospitals	ESRD Facilities	Inpatient Psychiatric Fa

QualityNet News

ospital Compare Preview Reports now
pril 2015 Hospital Compare preview reports
nticipating hospitals. The preview reports
015.

[All Article »](#)

adlines

- Inpatient hospitals for FY 2017 validation
- Hospital Compare updated December
- Procedures selected for hospital OQR this
- Nominations sought for CMS hospital da
- CY 2015 OPPS/AS final rule with comm

[New News »](#)

Registration

Measures

Data Collection

Data Submission

Webinars

Event Calendar

Cancer Hospital Workgroup

Resources

[Expert Panel](#)

About QualityNet

established by the Centers for Medicare & Medicaid Services (CMS), QualityNet provides healthcare quality improvement news, resources and data reporting tools and applications used by healthcare providers and others.

2/26/2016

25

PPS-Exempt Cancer Hospital Support Contact Page

Home	My QualityNet	Help			
Hospitals - Inpatient	Hospitals - Outpatient	Physician Offices	Ambulatory Surgical Centers	PPS-Exempt Cancer Hospitals	ESRD Facilities
					Inpatient Psychiatric Facilities

Support Contact

Support Contact
PPS-Exempt Cancer Hospital Quality Reporting (PCHQR) Program

The Centers for Medicare & Medicaid Services (CMS) has designated a contractor for Value, Incentives, and Quality Reporting Outreach and Education Support for the PCHQR Program.

[Submit all questions regarding the PCHQR program to the contractor via the PCH Quality Reporting Questions and Answers tool or call, toll-free, at \(844\) 472-4437 or \(866\) 800-8765 weekdays from 8 a.m. to 8 p.m. Eastern Time \(5 a.m. to 5 p.m. Pacific Time\).](#)

- Contact us by telephone
- Submit questions to the PCH Quality Reporting Questions and Answers Tool

2/24/2015

26

[illegible]

PPS-Exempt Cancer Hospitals Questions and Answers Tool

[illegible]

PPS-Exempt Cancer Hospitals Cancer Hospital Workgroup Tab

QualityNet Log in to QualityNet Secure Portal (formerly MyQualityNet)

Home My QualityNet Help

Hospitals - Inpatient Hospitals - Outpatient Physician Offices Ambulatory Surgical Centers PPS-Exempt Cancer Hospitals ESRD Facilities Inpatient Psychiatric Facilities Quality Improvement

QualityNet Registration
Hospitals - Inpatient
Hospitals - Outpatient
Physician Offices
Cancer Hospitals
ESRD Facilities
Inpatient Psychiatric Facilities
QIGs

QualityNet News
Hospital Compare Preview Reports
April 2015 Hospital Compare preview report participating hospitals. The preview reports are available.
Full Article »
Headlines
Inpatient hospitals for FY 2012 validation
Hospital Compare updated December 14, 2015
Providers attached for Hospital Compare
New members sought for CHW hospital as
CQ 2015 OHSAS final rule with comment
About QualityNet
Established by the Centers for Medicare & Medicaid Services (CMS), QualityNet provides healthcare quality improvement news, resources and data reporting tools and applications used by healthcare providers and others.

Log in to QualityNet Secure Portal
Log in
Download Symantec ID (required for login)
Portal Resources

Know the Security Policy
Before transmitting or receiving healthcare information or data, read the QualityNet System Security Policy, PDF

Questions & Answers
Hospitals - Inpatient
Hospitals - Outpatient
Physician Offices

2/26/2015 28

PPS-Exempt Cancer Hospitals Cancer Hospital Workgroup Page

Cancer Hospital Workgroup

PPS-Exempt Cancer Hospital Quality Reporting (PCHQR) Program

The Centers for Medicare & Medicaid Services (CMS) contracted with the American College of Surgeons (ACS) to plan and implement the reporting of three cancer-specific care measures to CMS on behalf of the 11 PPS-Exempt Cancer Hospitals (PCHs) through its Rapid Quality Reporting System (RQRS).

ACS has formed the PPS-Exempt Cancer Hospital Workgroup (CHW) to:

- provide advice and feedback on the operational expectations of the PPS-Exempt Cancer Hospital Quality Reporting (PCHQR) Program
- review and identify solutions to possible barriers and/or challenges encountered by the PCHs in their implementation and use of the RQRS
- communicate and share updates regarding data submission requirements and time-lines
- identify any anticipated potential unintended consequences of the Reporting Program

The CHW, which comprises leadership representatives from each of the PCHs, serves as an advisory committee in areas for additional review and study regarding the implementation and operationalization of measure reporting requirements relative to the stakeholder environment. Areas of expertise of the workgroup members include: data quality, clinical research and development, hospital and physician performance, data analysis, data warehousing, quality and performance improvement, pharmacy administration and project management.

For more information regarding CHW membership and purpose, refer to the [CHW membership list](#) (PDF 133 KB) and [CHW charter](#) (PDF 44 KB) documents.

CHW Meetings
CHW meetings are hosted by CMS and ACS and are held periodically throughout the year, either in person or via webconferencing. During these meetings informational resources to support the PCHQR program requirements are made available to the 11 participating PCHs. Refer to the [CHW meeting page](#) for resources from prior meetings.

2/26/2015 29

The PCHQR Cancer Hospital Workgroup (CHW) page provides:

- Overview of the CHW
- Links to the CHW membership list and charter
- CHW meeting information
- Link to the Webinars page

PPS-Exempt Cancer Hospitals Resources Tab

QualityNet Log in to QualityNet Secure Portal (formerly MyQualityNet)

Home My QualityNet Help

Hospitals - Inpatient Hospitals - Outpatient Physician Offices Ambulatory Surgical Centers PPS-Exempt Cancer Hospitals ESRD Facilities Inpatient Psychiatric Facilities Quality Improvement

QualityNet Registration
Hospitals - Inpatient
Hospitals - Outpatient
Physician Offices
Cancer Hospitals
ESRD Facilities
Inpatient Psychiatric Facilities
QIGs

QualityNet News
Hospital Compare Preview Reports
April 2015 Hospital Compare preview report participating hospitals. The preview reports are available.
Full Article »
Headlines
Inpatient hospitals for FY 2012 validation
Hospital Compare updated December 14, 2015
Providers attached for Hospital Compare
New members sought for CHW hospital as
CQ 2015 OHSAS final rule with comment
About QualityNet
Established by the Centers for Medicare & Medicaid Services (CMS), QualityNet provides healthcare quality improvement news, resources and data reporting tools and applications used by healthcare providers and others.

Log in to QualityNet Secure Portal
Log in
Download Symantec ID (required for login)
Portal Resources

Know the Security Policy
Before transmitting or receiving healthcare information or data, read the QualityNet System Security Policy, PDF

Questions & Answers
Hospitals - Inpatient
Hospitals - Outpatient
Physician Offices

2/26/2015 30

PPS-Exempt Cancer Hospitals Resources Page

[Hospital - Inpatient](#)
[Hospital - Outpatient](#)
[Physician - Office](#)
[Ambulatory Surgical Centers](#)
[PPS-Exempt Cancer Hospitals](#)
[ENB - Facilities](#)
[Inpatient Psychiatric Facilities](#)

Resources

Resources

PPS-Exempt Cancer Hospital Quality Reporting (PCHQR) Program Overview

The following sites provide additional information about the PCHQR Program's measure specifications and sampling methodology:

- American College of Surgeons (ACS) - PCHQR
- American Medical Association Physician Consortium for Performance Improvement (ACCA)
- American Society for Radiation Oncology (ASTRO)
- American College of Surgeons (ACS)
- National Healthcare Safety Network (NHSN)
- Medicare PPS-Exempt Cancer Hospitals
- Federal Register
- Hospital Consent
- Hospital Quality Reporting Consumer Assessment of Healthcare Providers and Systems (CHCAHPS)
- National Quality Forum: Measure Endorsements and Performance Standards (NQF)
- Regulations site

Program Specific Resources

- 2015 PCHQR Timeline, PPS-48-49 (10/15/14)
- Data Submission Guidelines, PPS-51-52 (10/15/14)
- Measure Guidelines, PPS-53-54 (10/15/14)
- Surgical Case Improvement Project (SCIP), Measure Guidelines, PPS-55-56 (10/15/14)

Forms

- Data Accuracy and Completeness Acknowledgment (DACA) Form, PPS-57-58 (10/15/14)
- Extraordinary Circumstances Extension/Exemption Request Form, PPS-59-60 (10/15/14)
- Measure Exception Form, PPS-61-62 (10/15/14)
- Notice of Participation Form, PPS-63-64 (10/15/14)

The PCHQR Resources page provides quick access to:

- Web Resources (outside of QualityNet)
- PCH-Specific Resources
- Forms
 - Data Accuracy and Completeness Acknowledgment (DACA)
 - Extraordinary Circumstances Extension/Exemption Request
 - Measure Exception
 - Notice of Participation (NoP)

Questions



This material was prepared by the Inpatient Value, Incentives, and Quality Reporting Outreach and Education Support Contractor under contract with the Centers for Medicare & Medicaid Services (CMS), an agency of the U.S. Department of Health and Human Services. HHS-64-500-2015-130070, FL-QOR-QIR-02-02162015-05